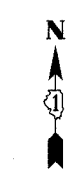


F.A.I. ROUTE	SECTION	COUNTY	TOTAL SHEETS	SHEET NO.
80-55-99-(K, BY&AC-B)	WILL	ILLINOIS	497	144
STA. 1934+00 TO STA. 1949+25		FED. AID PROJECT		
CONTRACT NO. 80906				



- 82 PIPE UNDERDRAINS 6" (SPECIAL) 2 @ 13 L.F.
- 83 STA. 17+00, 24' LT CB TA 5 DIA TIF OL T/F = 607.10 INV. = 601.39 (S) INV. = 604.43 (NE) INV. = 604.03 (NW)
- 84 SEE SHEET 142 PIPE #29 FOR MORE INFO
- 85 PIPE UNDERDRAINS 6" 400 L.F.
- 86 PIPE UNDERDRAINS 6" (SPECIAL) 30 L.F.
- 87 STA. 1938+00, 88' RT CONC. HEADWALL FOR PIPE DRAINS - 1 EA. INV. = 607.17
- 88 PIPE UNDERDRAINS 6" 400 L.F.
- 89 PIPE UNDERDRAINS 6" (SPECIAL) 30 L.F.
- 90 STA. 1942+00, 86' RT CONC. HEADWALL FOR PIPE DRAINS - 1 EA. INV. = 609.12
- 91 PIPE UNDERDRAINS 6" 342 L.F.
- 92 PIPE UNDERDRAINS 6" 2 @ 458 L.F.
- 93 PIPE UNDERDRAINS 6" 400 L.F.
- 94 STA. 21+46, 79' RT CIP END SEC 15 (45° SKEW) INV. = 592.00
- 95 P CUL CL A3 15 249' - 15" @ 0.40% T.B.F. = 80 C.Y.
- 96 STA. 23+20, 98' LT CIP END SEC 15 (45° SKEW) INV. = 593.00
- 97 PIPE UNDERDRAINS 6" (SPECIAL) 15 L.F.
- 98 STA. 24+00, 18' RT CONC. HEADWALL FOR PIPE DRAINS - 1 EA. INV. = 599.03
- 99 PIPE UNDERDRAINS 6" 400 L.F.
- 100 PIPE UNDERDRAINS 6" (SPECIAL) 15 L.F.
- 101 STA. 28+00, 18' RT CONC. HEADWALL FOR PIPE DRAINS - 1 EA. INV. = 588.16
- 102 STA. 1046+78, 77' LT CONC. HEADWALL FOR PIPE DRAINS - 1 EA. INV. = 580.84
- 103 PIPE UNDERDRAINS 6" (SPECIAL) 26 L.F.
- 104 STA 1046+97, 17' LT CONCRETE COLLAR
- 105 P CUL CL A1 24 15' - 24" @ 1.00% T.B.F. = 2 C.Y.
- 106 STA. 1046+97 FLUSH INLET BOX FOR MEDIAN INV. = 580.56
- 107 STA. 1046+97, 65' LT CONCRETE COLLAR
- 108 P CUL CL A1 24 14' - 24" @ 1.00% T.B.F. = 0 C.Y.
- 109 STA. 1046+96, 78' LT PRC FLAR END SEC 24 GRATING-C FL END S 24 INV. = 579.90
- 110 PIPE UNDERDRAINS 6" 500 L.F.
- 111 STA. 1048+00, 20' LT CONC. HEADWALL FOR PIPE DRAINS - 1 EA. INV. = 582.50
- 112 PIPE UNDERDRAINS 6" (SPECIAL) 14 L.F.
- 113 PIPE UNDERDRAINS 6" 500 L.F.
- 114 PIPE UNDERDRAINS 6" 293 L.F.
- 115 PIPE UNDERDRAINS 6" 400 L.F.
- 116 PIPE UNDERDRAINS 6" (SPECIAL) 2 @ 30 L.F.

- 117 STA. 4+00, 30' RT CONC. HEADWALL FOR PIPE DRAINS - 2 EA. INV. = 580.64
- 118 PIPE UNDERDRAINS 6" 200 L.F.
- 119 STA. 4+80, 43' RT CIP END SEC 30 (2 PIPES) INV. = 577.76
- 120 P CUL CL A2 30 162' - 30" @ 0.47% T.B.F. = 18 C.Y.
- 121 P CUL CL A2 30 162' - 30" @ 0.47% T.B.F. = 18 C.Y.
- 122 STA. 6+00, 33' RT CONC. HEADWALL FOR PIPE DRAINS - 1 EA. INV. = 581.98
- 123 PIPE UNDERDRAINS 6" (SPECIAL) 30 L.F.
- 124 PIPE UNDERDRAINS 6" 400 L.F.
- 125 STA. 10+00, 34' RT CONC. HEADWALL FOR PIPE DRAINS - 1 EA. INV. = 592.31
- 126 PIPE UNDERDRAINS 6" (SPECIAL) 31 L.F.
- 127 PIPE UNDERDRAINS 6" 400 L.F.
- 128 STA. 14+00, 30' RT CONC. HEADWALL FOR PIPE DRAINS - 1 EA. INV. = 605.33
- 129 PIPE UNDERDRAINS 6" (SPECIAL) 30 L.F.
- 130 PIPE UNDERDRAINS 6" 341 L.F.
- 131 P CUL CL A1 24 17' - 24" @ 9.06% T.B.F. = 0 C.Y.
- 132 STA. 16+50, 96' RT PRC FLAR END SEC 24 GRATING-C FL END SEC 24 INV. = 588.74
- 133 STA. 16+50, 73' RT CONCRETE COLLAR
- 134 STA. 1052+49, 88' LT STA. 1052+49, 92' LT CONCRETE COLLAR
- 135 P CUL CL A1 24 20' - 24" @ 0.85% T.B.F. = 0 C.Y.
- 136 P CUL CL A1 24 20' - 24" @ 0.35% T.B.F. = 0 C.Y.
- 137 STA. 1052+29, 90' LT CIP END SEC 24 (2 PIPES) INV. = 580.96

- 138 STA. 1052+29, 90' LT CIP END SEC 24 (2 PIPES) INV. = 580.96
- 139 STA. 1049+71, 58' LT INV. = 583.28
- 140 STA. 1049+71, 58' LT INV. = 583.28
- 141 STA. 1049+71, 58' LT INV. = 583.28
- 142 STA. 1049+71, 58' LT INV. = 583.28
- 143 STA. 1049+71, 58' LT INV. = 583.28
- 144 STA. 1049+71, 58' LT INV. = 583.28
- 145 STA. 1049+71, 58' LT INV. = 583.28
- 146 STA. 1049+71, 58' LT INV. = 583.28
- 147 STA. 1049+71, 58' LT INV. = 583.28
- 148 STA. 1049+71, 58' LT INV. = 583.28
- 149 STA. 1049+71, 58' LT INV. = 583.28
- 150 STA. 1049+71, 58' LT INV. = 583.28
- 151 STA. 1049+71, 58' LT INV. = 583.28
- 152 STA. 1049+71, 58' LT INV. = 583.28
- 153 STA. 1049+71, 58' LT INV. = 583.28
- 154 STA. 1049+71, 58' LT INV. = 583.28
- 155 STA. 1049+71, 58' LT INV. = 583.28
- 156 STA. 1049+71, 58' LT INV. = 583.28
- 157 STA. 1049+71, 58' LT INV. = 583.28

SEE SHEET NO. 142 MATCH LINE STA. 1934+00

MATCH LINE STA. 1046+50 SEE SHEET NO. 149

STONE RIPRAP CL A3, 4 SY  
FILTER FAB FOR RIPRAP, 4 SY

STONE RIPRAP CL A3, 19 SY  
FILTER FAB FOR RIPRAP, 19 SY

STONE RIPRAP CL A3, 26 SY  
FILTER FAB FOR RIPRAP, 26 SY

STONE RIPRAP CL A3, 15 SY  
FILTER FAB FOR RIPRAP, 15 SY

DETENTION AREA I - 50-YR HWE  
FOR MORE INFO SEE SHEET 195

RAMP "G"

RAMP "H"

MATCH LINE STA. 29+00 RAMP "G" SEE SHEET NO. 149

- A CONNECT PROP. PIPE UNDERDRAIN TO PROP. CB = STA. 17+00 INV. = 604.03 (NW) INV. = 604.63 (NE)
- B BEGIN UNDERDRAIN STA. 1049+71, 58' LT. INV. = 583.28
- C BEGIN UNDERDRAIN STA. 0+00 INV. = 584.56
- D BEGIN UNDERDRAIN STA. 17+41 INV. = 608.17
- E BEGIN UNDERDRAIN STA. 1053+00, 20' LT INV. = 585.59
- F BEGIN UNDERDRAIN STA. 1945+42, 56' RT INV. = 608.96
- G BEGIN UNDERDRAIN STA. 20+00 INV. = 607.60 (OFFSET 16' LT) INV. = 606.60

LEGEND	
	EXISTING DITCH LINE
	PROPOSED DITCH LINE
	PROPOSED FLOW DIRECTION
	AGGREGATE DITCH
	EXISTING STORM SEWER
	EXISTING PIPE CULVERT
	PROPOSED STORM SEWER OR PIPE CULVERT
	EXISTING PIPE UNDERDRAIN
	PROPOSED PIPE UNDERDRAIN

REVISIONS	
NAME	DATE

STATE OF ILLINOIS  
DEPARTMENT OF TRANSPORTATION  
F.A.I. 80 & F.A.I. 55 INTERCHANGE  
**PROPOSED DRAINAGE PLAN**  
F.A.I. 80, F.A.I. 55,  
RAMPS "G" & "H"

SCALE: 1" = 50'  
DATE: JANUARY, 2005

DRAWN BY: KMS  
CHECKED BY: MJL

DATE: 01/03/2005  
FILENAME: n:\proj\28180\28180-02\design\drain\drainage-03.dgn