

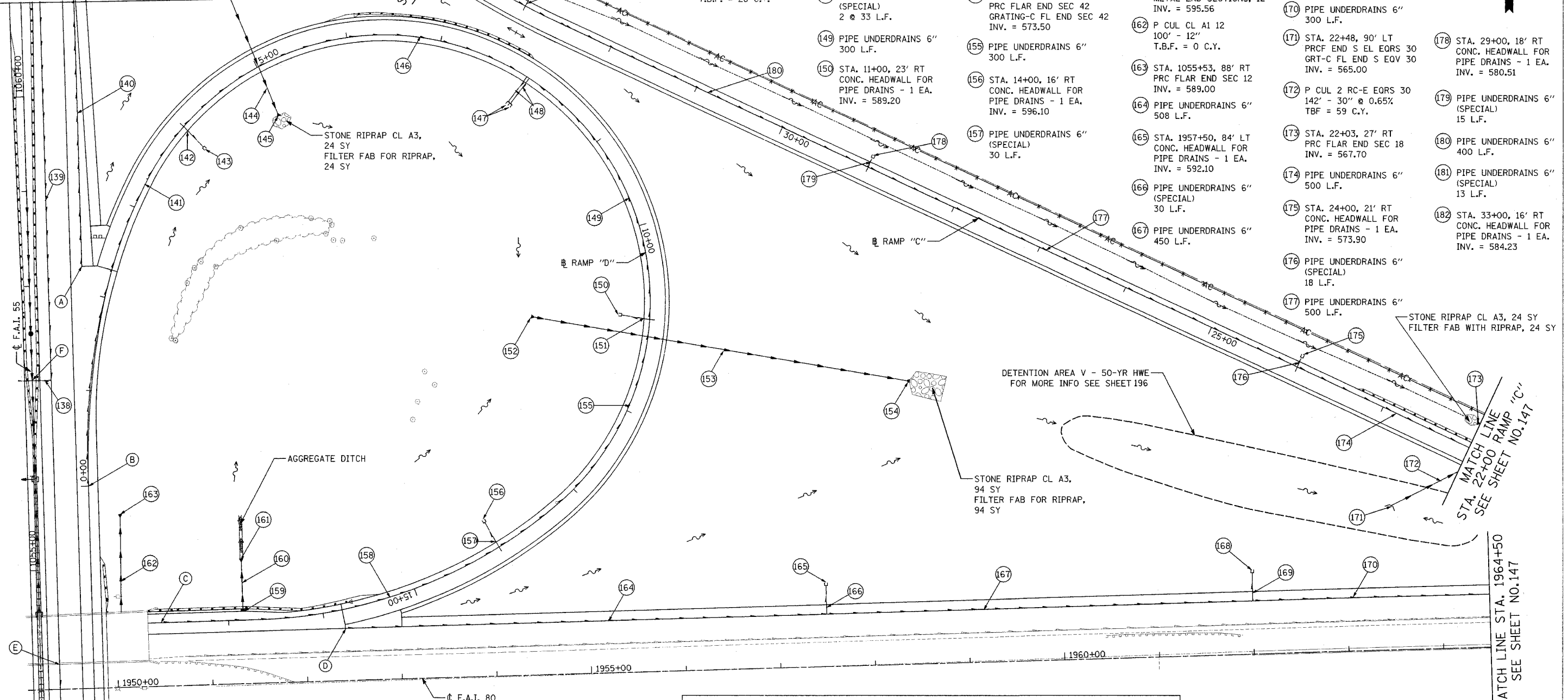
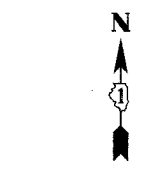
F.A.I. ROUTE	SECTION	COUNTY	TOTAL SHEETS	SHEET NO.
80-55	99-10K, BY&AC-B)	WILL	497	145
STA. 1949+25		TO STA. 1964+50		
FED. ROAD DIST. NO. 1 ILLINOIS FED. AID PROJECT				
CONTRACT NO. 80906				

- (A) BEGIN UNDERDRAIN STA. 1058+19, 56' RT INV. = 587.45
- (B) BEGIN UNDERDRAIN STA. 0+00 INV. = 587.41
- (C) BEGIN UNDERDRAIN STA. 17+69 INV. = 605.75
- (D) BEGIN UNDERDRAIN STA. 1952+42, 56' LT INV. = 603.51
- (E) BEGIN UNDERDRAIN STA. 1054+00 INV. = 586.81
- (F) CONNECT PROP. PIPE UNDERDRAIN TO PROP. SS STA. 1057+00 INV. = 584.69

- (138) PIPE UNDERDRAINS 6" (SPECIAL) 20 L.F.
- (139) PIPE UNDERDRAINS 6" 500 L.F.
- (140) PIPE UNDERDRAINS 6" 431 L.F.
- (141) PIPE UNDERDRAINS 6" 400 L.F.
- (142) PIPE UNDERDRAINS 6" (SPECIAL) 30 L.F.
- (143) STA. 4+00, 27' RT CONC. HEADWALL FOR PIPE DRAINS - 1 EA. INV. = 584.20
- (144) P CUL CL A2 24 154' - 24" @ 1.26% T.B.F. = 28 C.Y.
- (145) STA. 4+95, 52' RT PRC FLAR END SEC 24 GRATING-C FL END SEC 24 INV. = 580.01
- (146) PIPE UNDERDRAINS 6" 400 L.F.
- (147) STA. 8+00, 36' RT CONC. HEADWALL FOR PIPE DRAINS - 2 EA. INV. = 583.49
- (148) PIPE UNDERDRAINS 6" (SPECIAL) 2 @ 33 L.F.
- (149) PIPE UNDERDRAINS 6" 300 L.F.
- (150) STA. 11+00, 23' RT CONC. HEADWALL FOR PIPE DRAINS - 1 EA. INV. = 589.20
- (151) PIPE UNDERDRAINS 6" (SPECIAL) 30 L.F.
- (152) STA. 11+10, 121' RT PRC FLAR END SEC 42 GRATING-C FL END SEC 42 INV. = 575.80
- (153) P CUL CL A4 42 398' - 42" @ 0.58% T.B.F. = 121 C.Y.
- (154) STA. 11+23, 277' LT PRC FLAR END SEC 42 GRATING-C FL END SEC 42 INV. = 573.50
- (155) PIPE UNDERDRAINS 6" 300 L.F.
- (156) STA. 14+00, 16' RT CONC. HEADWALL FOR PIPE DRAINS - 1 EA. INV. = 596.10
- (157) PIPE UNDERDRAINS 6" (SPECIAL) 30 L.F.
- (158) PIPE UNDERDRAINS 6" 369 L.F.
- (159) STA. 16+84, 10' RT GRATES, TYPE A RIM. = 606.80 INV. = 604.80
- (160) PIPE DRAINS BCCS 12 (SEE SHEET 166) 50' - 12" @ 19% T.B.F. = 1 C.Y.
- (161) STA. 16+84, 67' RT METAL END SECTIONS, 12" INV. = 595.56
- (162) P CUL CL A1 12 100' - 12" T.B.F. = 0 C.Y.
- (163) STA. 1055+53, 88' RT PRC FLAR END SEC 12 INV. = 589.00
- (164) PIPE UNDERDRAINS 6" 508 L.F.
- (165) STA. 1957+50, 84' LT CONC. HEADWALL FOR PIPE DRAINS - 1 EA. INV. = 592.10
- (166) PIPE UNDERDRAINS 6" (SPECIAL) 30 L.F.
- (167) PIPE UNDERDRAINS 6" 450 L.F.
- (168) STA. 1962+00, 83' LT CONC. HEADWALL FOR PIPE DRAINS - 1 EA. INV. = 579.50
- (169) PIPE UNDERDRAINS 6" (SPECIAL) 30 L.F.
- (170) PIPE UNDERDRAINS 6" 300 L.F.
- (171) STA. 22+48, 90' LT PRC FLAR END S EL EQRS 30 GRT-C FL END S EQV 30 INV. = 565.00
- (172) P CUL 2 RC-E EQRS 30 142' - 30" @ 0.65% TBF = 59 C.Y.
- (173) STA. 22+03, 27' RT PRC FLAR END SEC 18 INV. = 567.70
- (174) PIPE UNDERDRAINS 6" 500 L.F.
- (175) STA. 24+00, 21' RT CONC. HEADWALL FOR PIPE DRAINS - 1 EA. INV. = 573.90
- (176) PIPE UNDERDRAINS 6" (SPECIAL) 18 L.F.
- (177) PIPE UNDERDRAINS 6" 500 L.F.
- (178) STA. 29+00, 18' RT CONC. HEADWALL FOR PIPE DRAINS - 1 EA. INV. = 580.51
- (179) PIPE UNDERDRAINS 6" (SPECIAL) 15 L.F.
- (180) PIPE UNDERDRAINS 6" 400 L.F.
- (181) PIPE UNDERDRAINS 6" (SPECIAL) 13 L.F.
- (182) STA. 33+00, 16' RT CONC. HEADWALL FOR PIPE DRAINS - 1 EA. INV. = 584.23

SEE SHEET NO.150
MATCH LINE STA. 1061+00

SEE SHEET NO.150
MATCH LINE STA. 34+00 RAMP "C"



LEGEND	
	EXISTING DITCH LINE
	PROPOSED DITCH LINE
	PROPOSED FLOW DIRECTION
	AGGREGATE DITCH
	EXISTING STORM SEWER
	EXISTING PIPE CULVERT
	PROPOSED STORM SEWER OR PIPE CULVERT
	EXISTING PIPE UNDERDRAIN
	PROPOSED PIPE UNDERDRAIN

REVISIONS	
NAME	DATE

STATE OF ILLINOIS
DEPARTMENT OF TRANSPORTATION
F.A.I. 80 & F.A.I. 55 INTERCHANGE
PROPOSED DRAINAGE PLAN
F.A.I. 55, F.A.I. 80,
RAMPS "C" & "D"

SCALE: 1" = 50'
DATE: JANUARY, 2005

DRAWN BY: KMS
CHECKED BY: MJL

DATE: 01/03/2005
FILENAME: n:\proj\28802880\02\user\m\drainage\2880\drainage-04.dgn