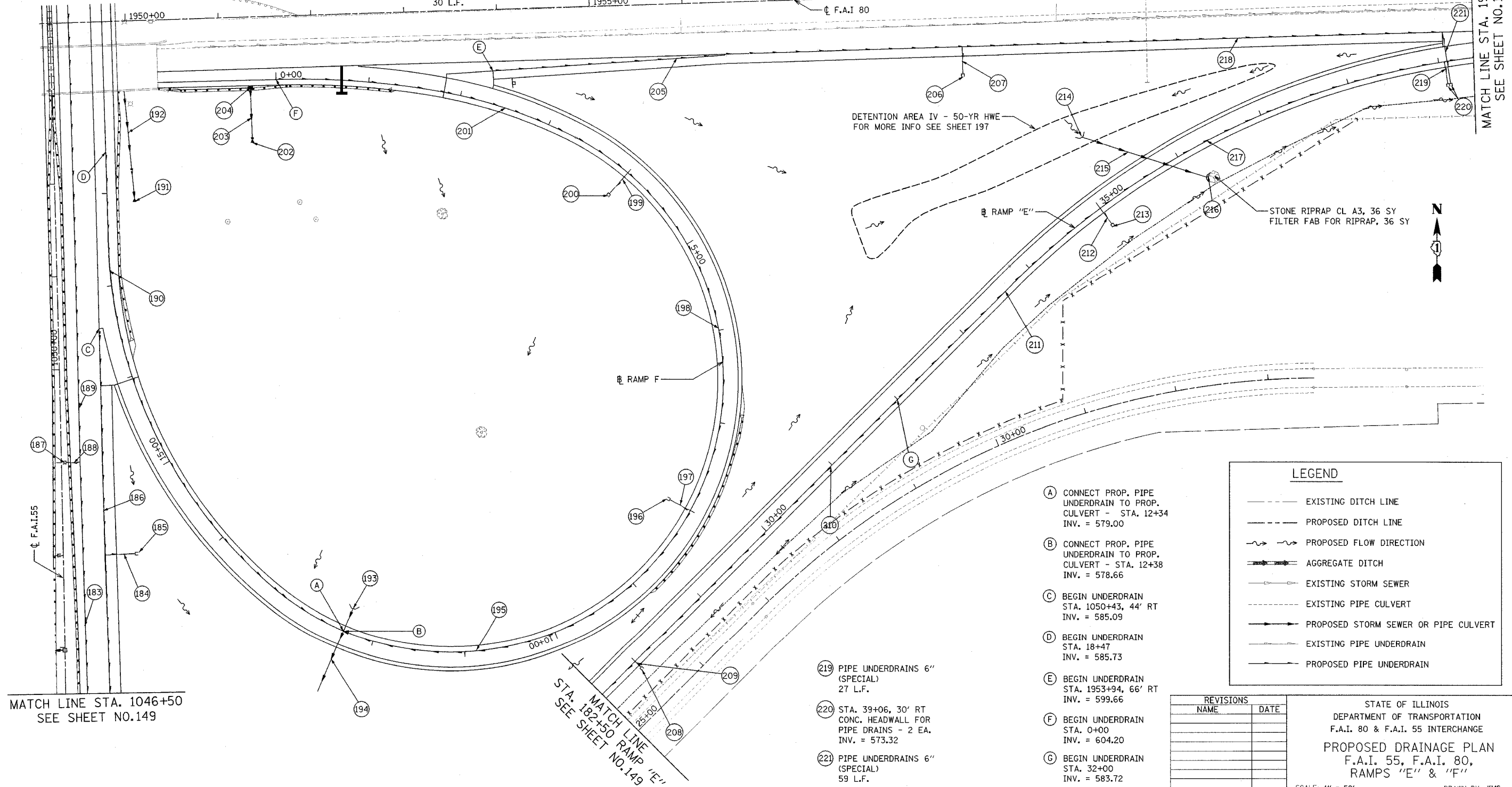


F.A.I. ROUTE	SECTION	COUNTY	TOTAL SHEETS	SHEET NO.
80-55 99-1(K,B,Y&AC-B)	WILL		497	146
STA. 1949+25 TO STA. 1964+50		FED. ROAD DIST. NO. 1 ILLINOIS FED. AID PROJECT		
CONTRACT NO. 80906				

- (183) PIPE UNDERDRAINS 6" 500 L.F.
- (184) PIPE UNDERDRAINS 6" (SPECIAL) 33 L.F.
- (185) STA. 1048+00, 80' RT CONC. HEADWALL FOR PIPE DRAINS - 1 EA. INV. = 582.62
- (186) PIPE UNDERDRAINS 6" 243 L.F.
- (187) STA. 1048+00, 5' RT CONC. HEADWALL FOR PIPE DRAINS - 1 EA. INV. = 583.83
- (188) PIPE UNDERDRAINS 6" (SPECIAL) 15 L.F.
- (189) PIPE UNDERDRAINS 6" 500 L.F.
- (190) PIPE UNDERDRAINS 6" 609 L.F.
- (191) STA. 1051+82, 86' RT PRC FLAR END SEC 12 INV. = 587.00
- (192) P CUL CL A1 12 100' - 12" T.B.F. = 0 C.Y.
- (193) STA. 12+34, 31' RT CIP END SEC 24 INV. = 578.11
- (194) P CUL CL A1 24 122' - 24" @ 0.87% T.B.F. = 3 C.Y.
- (195) PIPE UNDERDRAINS 6" 434 L.F.
- (196) STA. 8+00, 28' RT CONC. HEADWALL FOR PIPE DRAINS - 1 EA. INV. = 581.80
- (197) PIPE UNDERDRAINS 6" (SPECIAL) 25 L.F.
- (198) PIPE UNDERDRAINS 6" 400 L.F.
- (199) PIPE UNDERDRAINS 6" (SPECIAL) 30 L.F.
- (200) STA. 4+00, 23' RT CONC. HEADWALL FOR PIPE DRAINS - 1 EA. INV. = 592.50
- (201) PIPE UNDERDRAINS 6" 400 L.F.
- (202) STA. 1951+32, 135' RT METAL END SECTIONS, 12" INV. = 592.00
- (203) PIPE DRAINS BCCS 12 55' - 12" @ 23% T.B.F. = 1 C.Y.
- (204) STA. 1951+32, 76' RT GRATES, TYPE A RIM. = 606.50 INV. = 604.50
- (205) PIPE UNDERDRAINS 6" 507 L.F.
- (206) STA. 1959+00, 88' RT CONC. HEADWALL FOR PIPE DRAINS - 1 EA. INV. = 588.71
- (207) PIPE UNDERDRAINS 6" (SPECIAL) 29 L.F.
- (208) STA. 28+00, 13' RT CONC. HEADWALL FOR PIPE DRAINS - 1 EA. INV. = 580.52
- (209) PIPE UNDERDRAINS 6" (SPECIAL) 10 L.F.
- (210) PIPE UNDERDRAINS 6" 400 L.F.
- (211) PIPE UNDERDRAINS 6" 300 L.F.
- (212) PIPE UNDERDRAINS 6" (SPECIAL) 24 L.F.
- (213) STA. 35+00, 17' RT CONC. HEADWALL FOR PIPE DRAINS - 1 EA. INV. = 580.84
- (214) STA. 35+27, 79' LT CIP END SEC 18 (40° SKEW) INV. = 575.80
- (215) PCUL CL A2 18 141' - 18" @ 1.00% T.B.F. = 45 C.Y.
- (216) STA. 36+17, 40' RT CIP END SEC 18 (40° SKEW) INV. = 574.39
- (217) PIPE UNDERDRAINS 6" 406 L.F.
- (218) PIPE UNDERDRAINS 6" 512 L.F.



- (219) PIPE UNDERDRAINS 6" (SPECIAL) 27 L.F.
- (220) STA. 39+06, 30' RT CONC. HEADWALL FOR PIPE DRAINS - 2 EA. INV. = 573.32
- (221) PIPE UNDERDRAINS 6" (SPECIAL) 59 L.F.
- (A) CONNECT PROP. PIPE UNDERDRAIN TO PROP. CULVERT - STA. 12+34 INV. = 579.00
- (B) CONNECT PROP. PIPE UNDERDRAIN TO PROP. CULVERT - STA. 12+38 INV. = 578.66
- (C) BEGIN UNDERDRAIN STA. 1050+43, 44' RT INV. = 585.09
- (D) BEGIN UNDERDRAIN STA. 18+47 INV. = 585.73
- (E) BEGIN UNDERDRAIN STA. 1953+94, 66' RT INV. = 599.66
- (F) BEGIN UNDERDRAIN STA. 0+00 INV. = 604.20
- (G) BEGIN UNDERDRAIN STA. 32+00 INV. = 583.72

LEGEND

- EXISTING DITCH LINE
- - - PROPOSED DITCH LINE
- ~ ~ ~ PROPOSED FLOW DIRECTION
- AGGREGATE DITCH
- EXISTING STORM SEWER
- - - EXISTING PIPE CULVERT
- PROPOSED STORM SEWER OR PIPE CULVERT
- EXISTING PIPE UNDERDRAIN
- PROPOSED PIPE UNDERDRAIN

REVISIONS	
NAME	DATE

STATE OF ILLINOIS
DEPARTMENT OF TRANSPORTATION
F.A.I. 80 & F.A.I. 55 INTERCHANGE

PROPOSED DRAINAGE PLAN
F.A.I. 55, F.A.I. 80,
RAMPS "E" & "F"

SCALE: 1" = 50'
DATE: JANUARY, 2005

DRAWN BY: KMS
CHECKED BY: MJL

DATE: 01/03/2005
FILENAME: D:\proj\2880\2880-02\design\drainage\2880_drainage_05.dgn