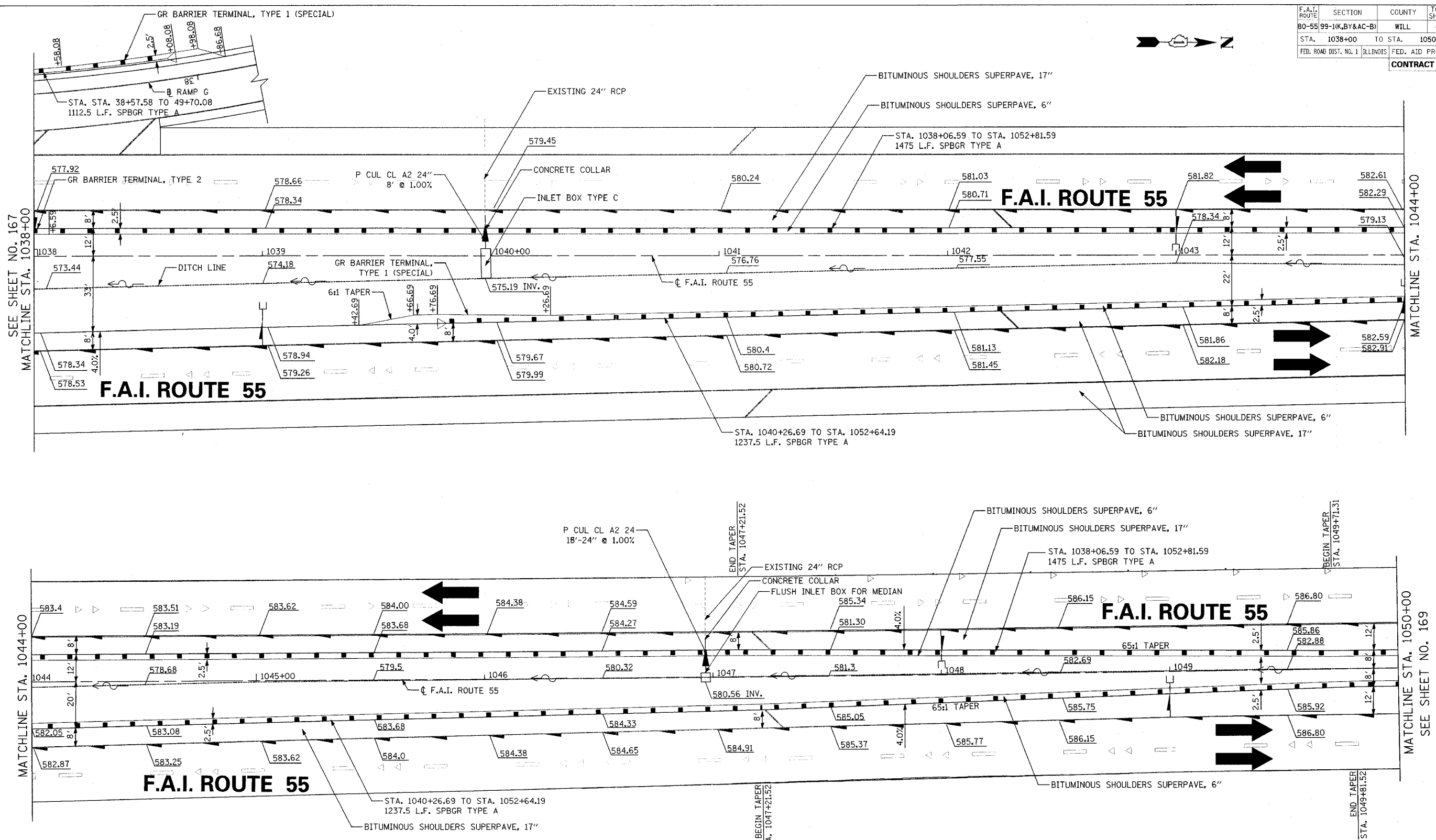


F.A.I. ROUTE	SECTION	COUNTY	TOTAL SHEETS	SHEET NO.
80-55	99-1(K,B,Y&AC-B)	WILL	497	168
STA. 1038+00 TO STA. 1050+00				
FED. ROAD DIST. NO. 1		ILLINOIS FED. AID PROJECT		
CONTRACT NO. 80906				



SEE SHEET NO. 167
MATCHLINE STA. 1038+00

MATCHLINE STA. 1044+00

MATCHLINE STA. 1044+00

MATCHLINE STA. 1050+00
SEE SHEET NO. 169

NOTES:
1. SEE SHEETS NO. 143 THRU 149 FOR PROPOSED DRAINAGE

REVISIONS	
NAME	DATE

STATE OF ILLINOIS
DEPARTMENT OF TRANSPORTATION
F.A.I. 80 & F.A.I. 55 INTERCHANGE
F.A.I. 55 MEDIAN AND
GUARDRAIL DETAILS
STA. 1038+00 TO STA. 1050+00
SCALE: 1" = 20'
DATE: JANUARY, 2005
DRAWN BY: NLP
CHECKED BY: MJL

DATE: 01/03/2005
FILENAME: n:\proj\2889\2889.dwg