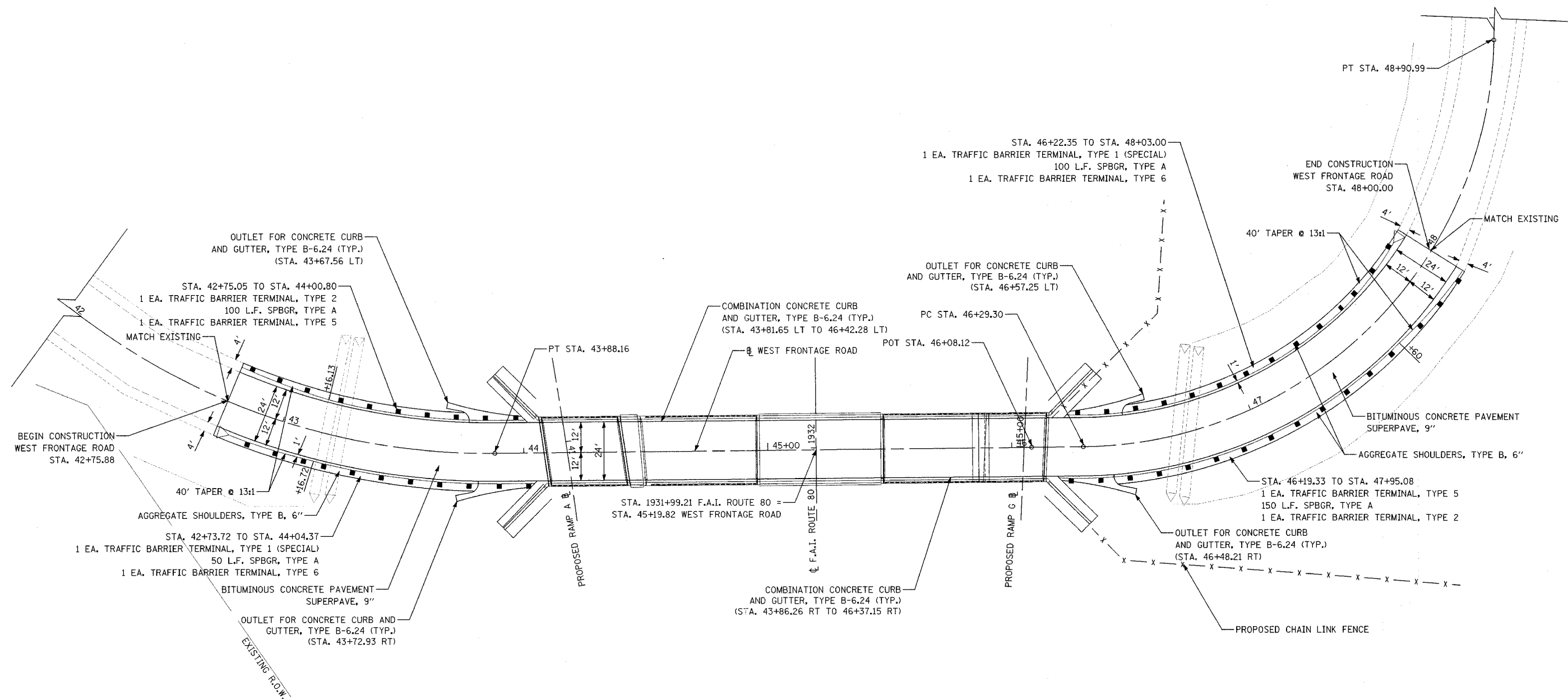
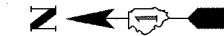


F.A.I. ROUTE	SECTION	COUNTY	TOTAL SHEETS	SHEET NO.
80-55 99-1(K, BY&AC-B)	WILL		497	172
STA. 42+00	TO STA. 49+00			
FED. ROAD DIST. NO. 1 ILLINOIS			FED. AID PROJECT	
CONTRACT NO. 80906				



NOTES:
 12" DIAMETER HOLES SHALL BE CORED THROUGH THE GUTTER OUTLET AS NECESSARY TO ALLOW PROPER PLACEMENT OF THE SPBGR, TYPE A POSTS. AFTER DRIVING THE POSTS, THE HOLES SHALL BE FILLED AND COMPACTED FLUSH WITH THE SURROUNDING CONCRETE WITH AGGREGATE MEETING THE REQUIREMENTS FOR SUB-BASE GRANULAR MATERIAL, TYPE B. THIS WORK WILL NOT BE PAID FOR SEPARATELY, BUT SHALL BE INCLUDED IN THE SPBGR, TYPE A PAY ITEM.
 SEE SHEET 69 FOR PROPOSED P.G.L. OF WEST FRONTAGE ROAD

REVISIONS	
NAME	DATE

STATE OF ILLINOIS
 DEPARTMENT OF TRANSPORTATION
 F.A.I. 80 & F.A.I. 55 INTERCHANGE
**PROPOSED WEST FRONTAGE ROAD
 DETAILS**

SCALE: 1" = 20'
 DATE: JANUARY, 2005

DRAWN BY: NLP
 CHECKED BY: MJL

DATE: 01/04/2005
 FILENAME: N:\PROJ\08002860-02\design\Detail\2860-PROP-PLAN-FRONTAGE ROAD.dgn