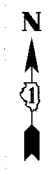
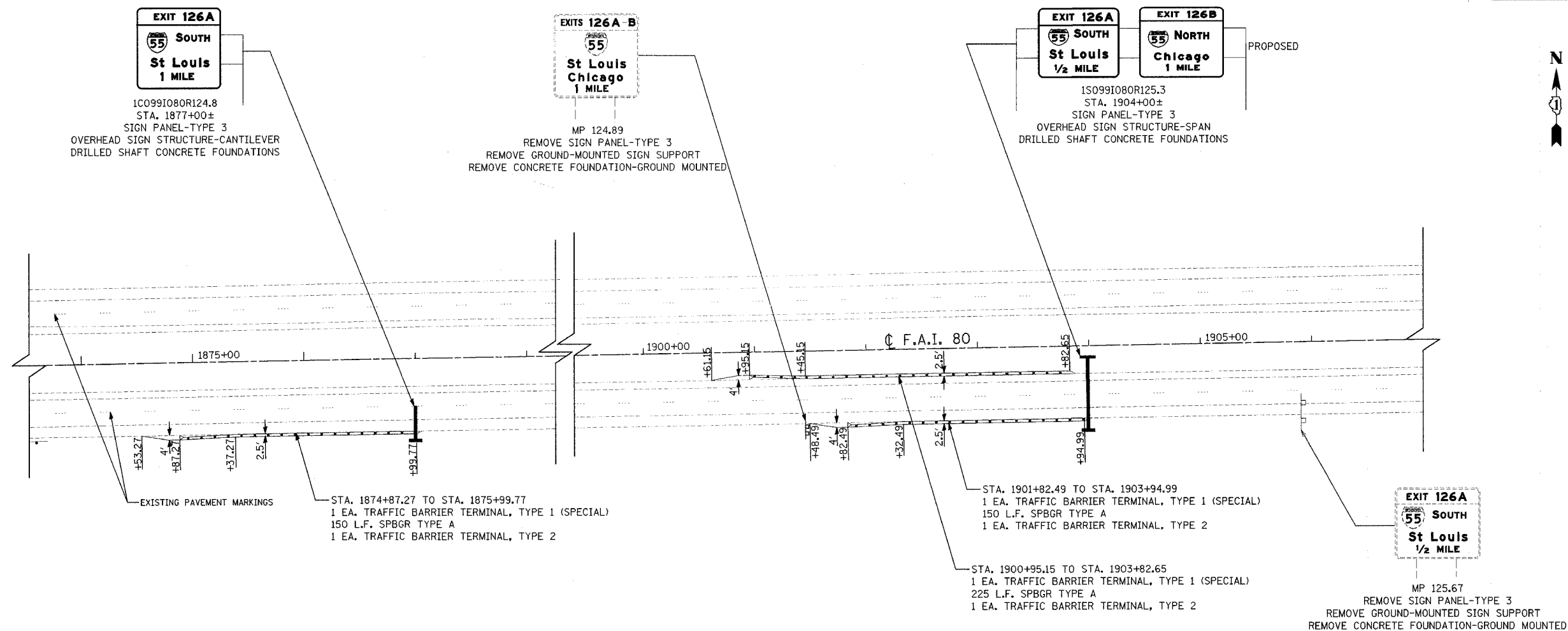




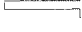

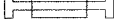


F.A.I. ROUTE	SECTION	COUNTY	TOTAL SHEETS	SHEET NO.
80-55	99-1(K,BY&AC-B)	WILL	497	173
STA. 1874+00		TO STA. 1907+00		
FED. ROAD DIST. NO. 1	ILLINOIS	FED. AID PROJECT	CONTRACT NO. 80906	



- NOTES:**
1. THE NEW FOUNDATIONS FOR THE SIGN STRUCTURES SHALL BE PROTECTED BY GUARDRAIL AS SHOWN IN PLANS.
  2. THE CONTRACTOR SHALL VERIFY ANY UTILITY CONFLICTS WITH THE PROPOSED SIGN FOUNDATION PRIOR TO CONSTRUCTION.
  3. FOR ELECTRICAL CONNECTION/DETAILS TO SIGN LUMINAIRES, SEE LIGHTING PLANS IN THIS CONTRACT.
  4. THE CONTRACTOR SHALL INSTALL THE FOUNDATION IN THIS CONTRACT AS PER DETAILS SHOWN IN THE PLAN. THE PROPOSED SIGN PANEL(S), SIGN LUMINAIRE AND ELECTRICAL CONNECTIONS, WALKWAY AND TRUSS SHALL BE INSTALLED BY OTHERS IN FUTURE CONTRACT.
  5. THE EXISTING SIGN SHALL REMAIN IN PLACE IN THIS CONTRACT. EXISTING SIGN REMOVAL SHALL BE DONE BY OTHERS IN FUTURE CONTRACT.

**SIGNING LEGEND**

-  EXISTING GROUND OR BRIDGE MOUNTED SIGN
-  PROPOSED GROUND OR BRIDGE MOUNTED SIGN
-  EXISTING OVERHEAD TRUSS MOUNTED SIGN
-  PROPOSED OVERHEAD TRUSS MOUNTED SIGN
-  EXISTING OVERHEAD CANTILEVER MOUNTED SIGN
-  PROPOSED OVERHEAD CANTILEVER MOUNTED SIGN
-  PROPOSED DYNAMIC MESSAGE SIGN

REVISIONS	
NAME	DATE

STATE OF ILLINOIS  
 DEPARTMENT OF TRANSPORTATION  
 F.A.I. 80 & F.A.I. 55 INTERCHANGE  
**PERMANENT PAVEMENT MARKING PLAN**  
 F.A.I. 80

SCALE: 1" = 50'  
 DATE: JANUARY, 2005

DRAWN BY: NLP  
 CHECKED BY: MJL

DATE: 01/02/2005  
 FILENAME: I:\100\20900\2090-02\design\marking\2090-02\signing\_01a.dgn