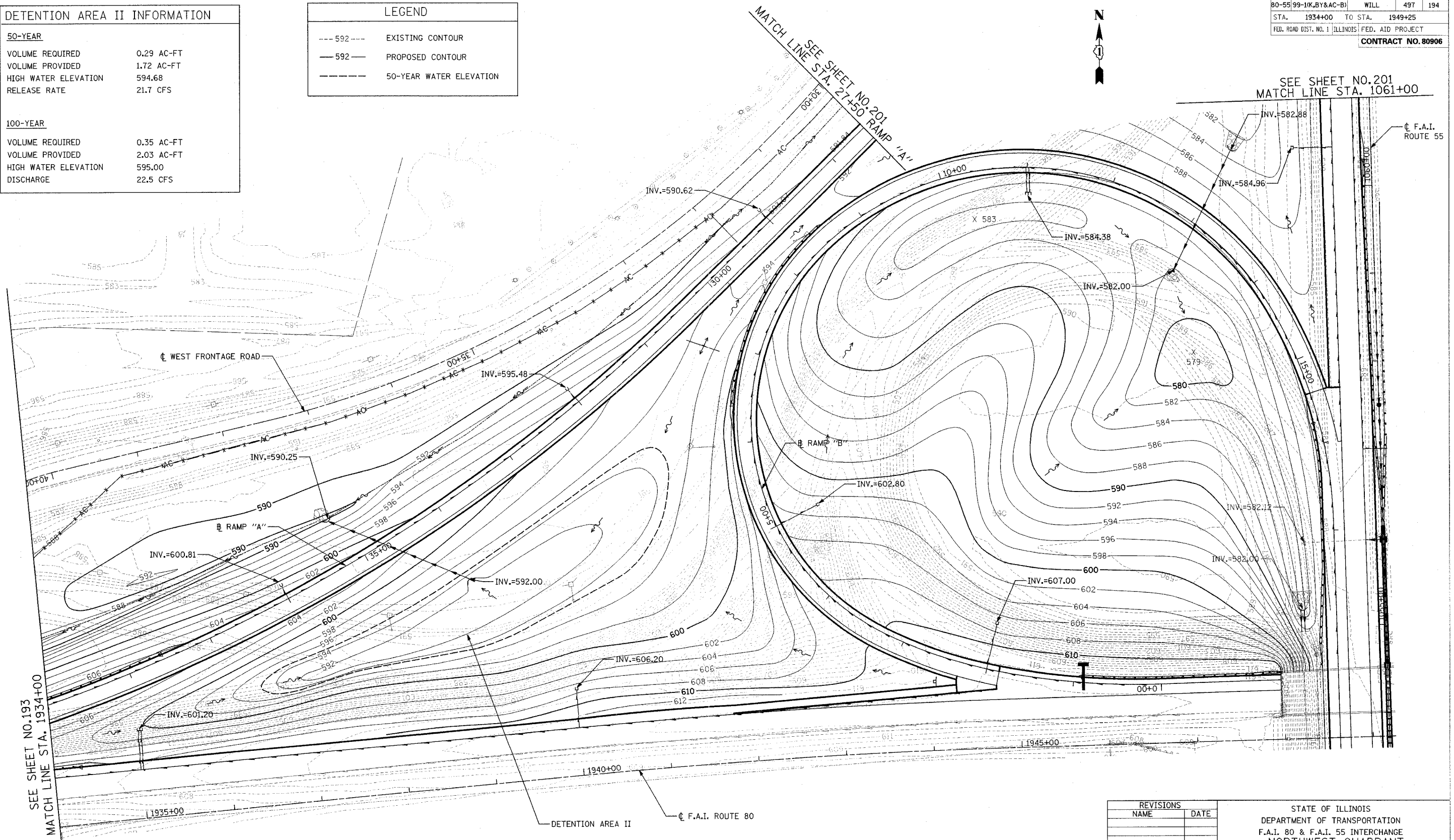
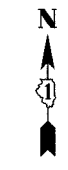


DETENTION AREA II INFORMATION	
50-YEAR	
VOLUME REQUIRED	0.29 AC-FT
VOLUME PROVIDED	1.72 AC-FT
HIGH WATER ELEVATION	594.68
RELEASE RATE	21.7 CFS
100-YEAR	
VOLUME REQUIRED	0.35 AC-FT
VOLUME PROVIDED	2.03 AC-FT
HIGH WATER ELEVATION	595.00
DISCHARGE	22.5 CFS

LEGEND	
---592---	EXISTING CONTOUR
—592—	PROPOSED CONTOUR
-----	50-YEAR WATER ELEVATION

F.A.I. ROUTE	SECTION	COUNTY	TOTAL SHEETS	SHEET NO.
80-55	99-1(K,BY&C-B)	WILL	497	194
STA. 1934+00 TO STA. 1949+25		ILLINOIS FED. AID PROJECT		
CONTRACT NO. 80906				



SEE SHEET NO.193
MATCH LINE STA. 1934+00

SEE SHEET NO.201
MATCH LINE STA. 27+50 RAMP "A"

SEE SHEET NO.201
MATCH LINE STA. 1061+00

F.A.I. ROUTE 55

DETENTION AREA II

F.A.I. ROUTE 80

REVISIONS	
NAME	DATE

STATE OF ILLINOIS
DEPARTMENT OF TRANSPORTATION
F.A.I. 80 & F.A.I. 55 INTERCHANGE
NORTHWEST QUADRANT
GRADING PLAN
F.A.I. 80, F.A.I. 55,
RAMPS "A" & "B"

SCALE: 1" = 50'
DATE: JANUARY, 2005

DRAWN BY: KMS, DMW
CHECKED BY: MJL

DATE: 01/03/2005
FILENAME: n:\p09\2880\2880-02\design\grading\2880-02_grad.dwg