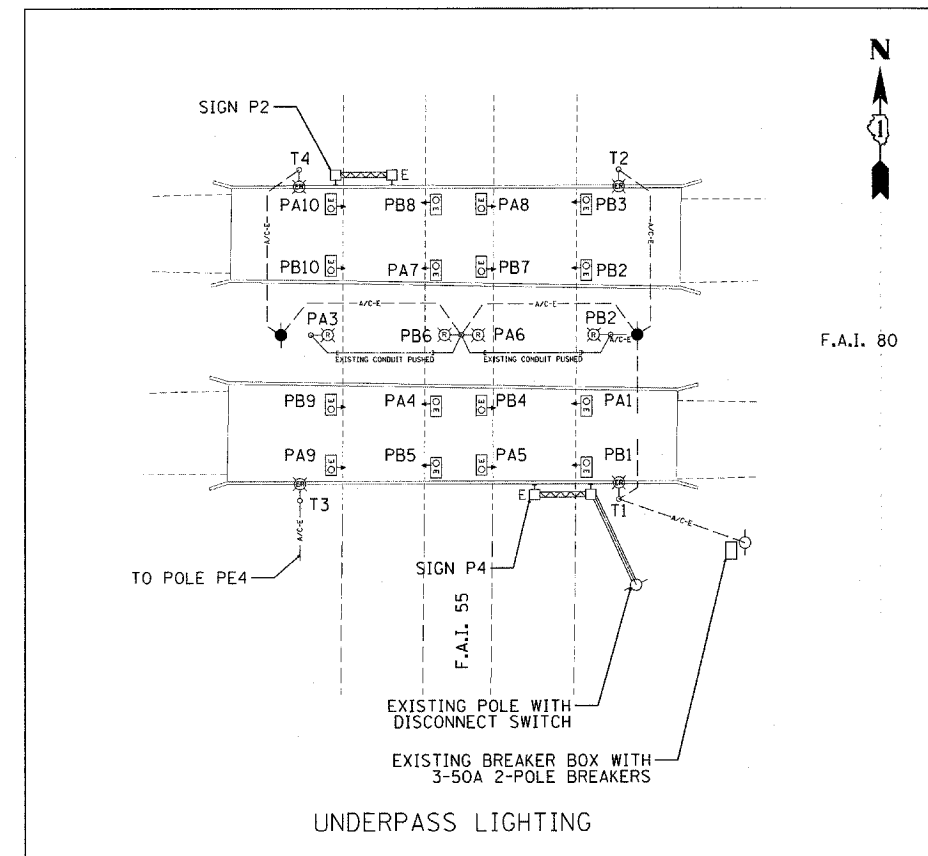
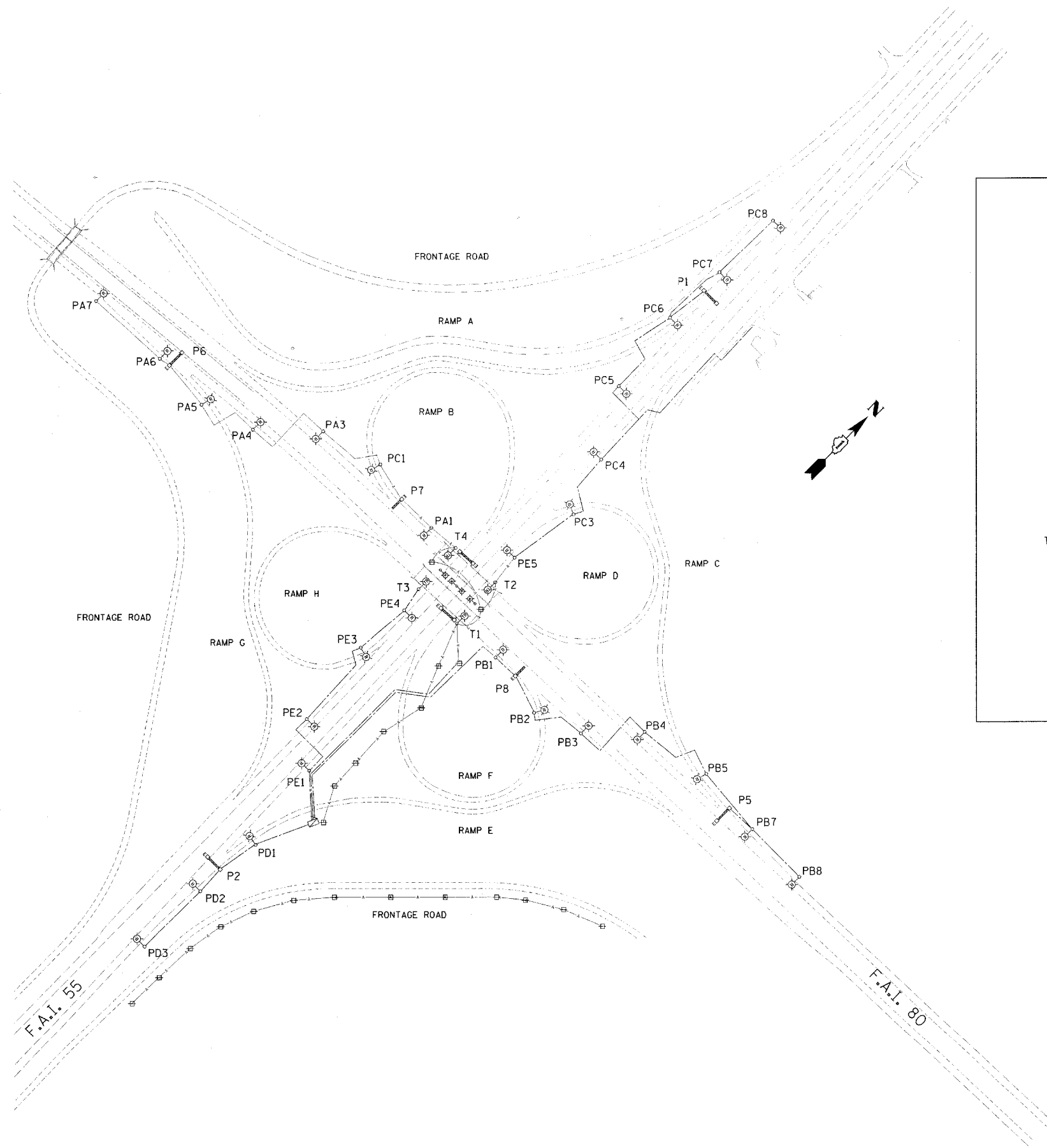
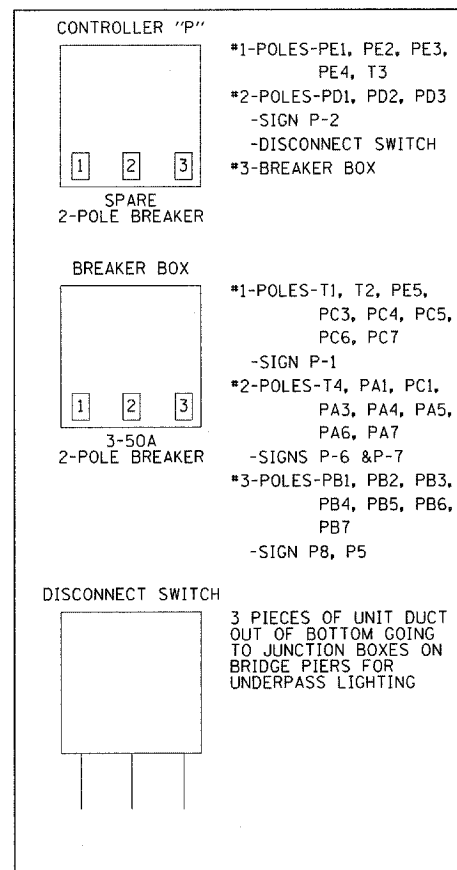


EXISTING CONTROLLER 'P'



**LEGEND:**

- ⊗ EXISTING LIGHT POLE TO BE REMOVED
- ⊠ EXISTING LIGHTING CONTROLLER
- ⊡ EXISTING LIGHTED CANTILEVER SIGN STRUCTURE
- ⊢ EXISTING LIGHTED TRUSS SIGN STRUCTURE
- ⊣ EXISTING LIGHTED BRIDGE MOUNTED SIGN
- CONDUIT
- ⊕ UTILITY POLE
- AERIAL CABLE
- INSULATED CABLE IN UNIT DUCT

| REVISIONS |      |
|-----------|------|
| NAME      | DATE |
|           |      |
|           |      |
|           |      |
|           |      |
|           |      |
|           |      |
|           |      |
|           |      |
|           |      |
|           |      |

STATE OF ILLINOIS  
 DEPARTMENT OF TRANSPORTATION  
 F.A.I. 80 & F.A.I. 55 INTERCHANGE

**EXISTING LIGHTING SYSTEM**

SCALE: 1" = 200'  
 DATE: JANUARY, 2005

DRAWN BY: JMV  
 CHECKED BY: AC