

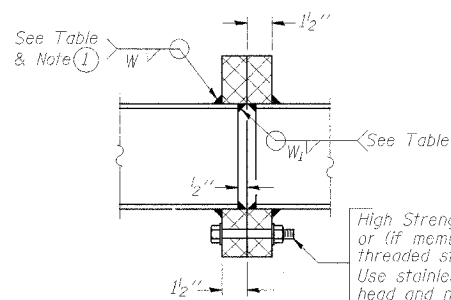
STATE OF ILLINOIS
DEPARTMENT OF TRANSPORTATION

ROUTE NO.	SECTION	COUNTY	TOTAL SHEETS	SHEET NO.
55.80	*	WILL.	497	272
FED. ROAD DIST. NO. 1		ILLINOIS	FED. AID PROJECT-	
* 99-1K.BYBAC-B)				

#80906

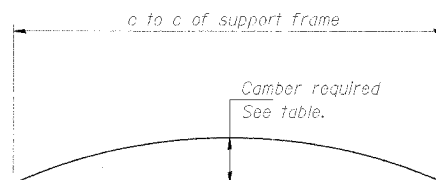
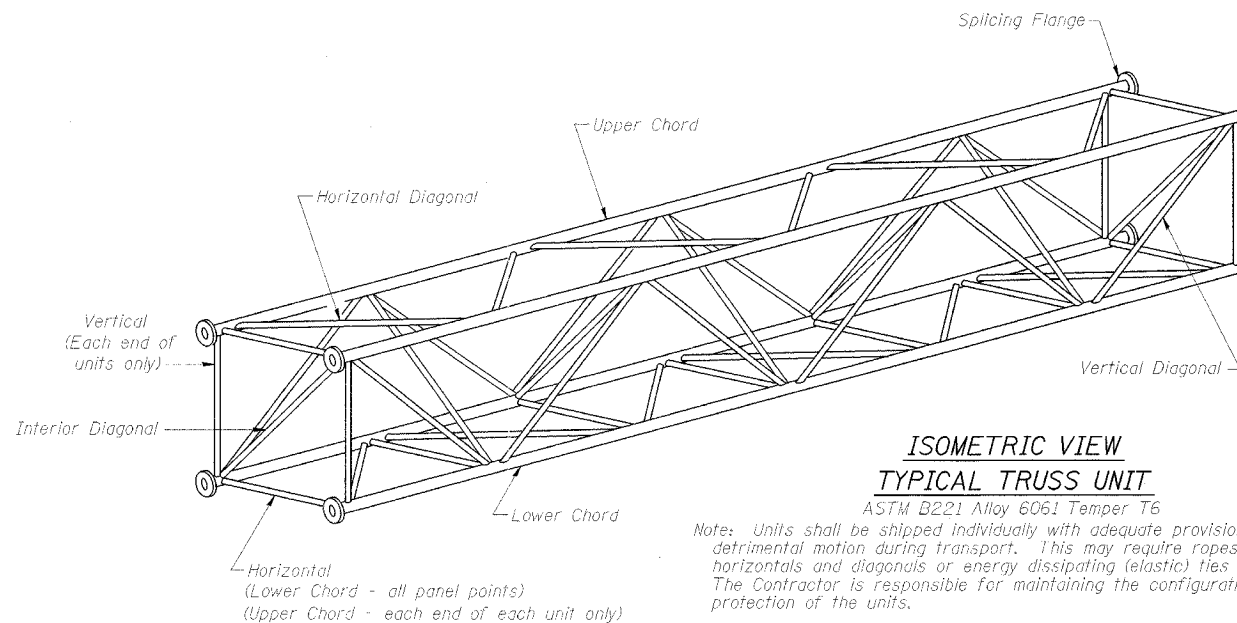
TRUSS UNIT TABLE

Structure Number	Station	Design Truss Type	Exterior Units (2)		Interior Unit		Upper & Lower Chord		Verticals; Horizontals; Vertical, Horizontal, and Interior Diagonals		Camber at Midspan	Splicing Flange						
			No. Panels per Unit	Unit Lgth.(L _e)	Panel Lgth.(P)	No. Req'd.	No. Panels per Unit	Unit Lgth.(L _i)	Panel Lgth.(P)	O.D.		Wall	O.D.	Wall	No./Splice	Bolts Dia.	Weld W	W ₁
IS099I055R249.9	1033+55	I-A	8	39'-10 1/2"	4'-9"			5"	5/16"	2 1/2"	5/16"	2.15"	6	7/8"	5/16"	1/4"	8 3/4"	11 3/4"
IS099I055L250.5	1074+00	I-A	8	37'-10 1/2"	4'-6"			5"	5/16"	2 1/2"	5/16"	1.95"	6	7/8"	5/16"	1/4"	8 3/4"	11 3/4"
IS099I080R125.8	1930+00	I-A	7	35'-8 1/2"	4'-10"			5"	1/4"	2 1/2"	1/4"	1.75"	6	7/8"	5/16"	1/4"	8 3/4"	11 3/4"
IS099I080L126.7	1973+35	I-A	7	35'-8 1/2"	4'-10"			5"	1/4"	2 1/2"	1/4"	1.75"	6	7/8"	5/16"	1/4"	8 3/4"	11 3/4"
IS099I055R249.5	1007+55	I-A	6	30'-10 1/2"	4'-10"			5"	1/4"	2 1/2"	1/4"	1.25"	6	7/8"	5/16"	1/4"	8 3/4"	11 3/4"
IS099I055L251.0	1100+50	I-A	8	39'-10 1/2"	4'-9"			5"	5/16"	2 1/2"	5/16"	2.15"	6	7/8"	5/16"	1/4"	8 3/4"	11 3/4"
IS099I080R125.3	1904+00	I-A	7	33'-4 1/2"	4'-6"			5"	1/4"	2 1/2"	1/4"	1.50"	6	7/8"	5/16"	1/4"	8 3/4"	11 3/4"
IS099I080L127.1	1999+85	I-A	7	33'-4 1/2"	4'-6"			5"	1/4"	2 1/2"	1/4"	1.50"	6	7/8"	5/16"	1/4"	8 3/4"	11 3/4"



SECTION B-B

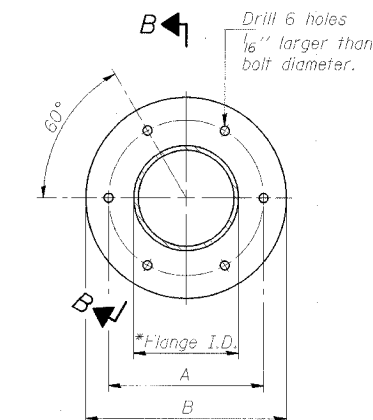
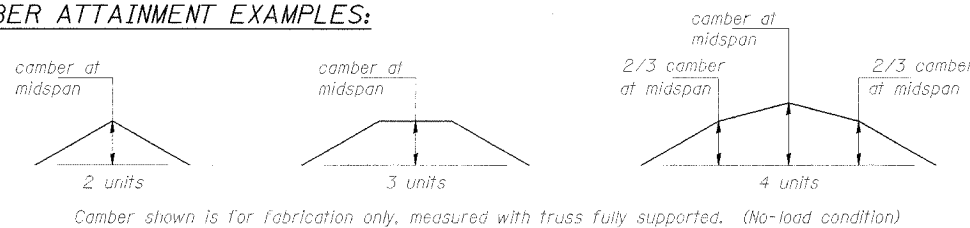
① Splicing Flanges shall be attached to each truss unit with the truss shop assembled to camber shown. Truss units shall be in proper alignment and flange surfaces shall be shop bolted into full contact before welding. Sufficient external welds or tacks shall be made to secure flanges until remaining welds are made after disassembly. Adjacent flanges shall be "match marked" to insure proper field assembly.



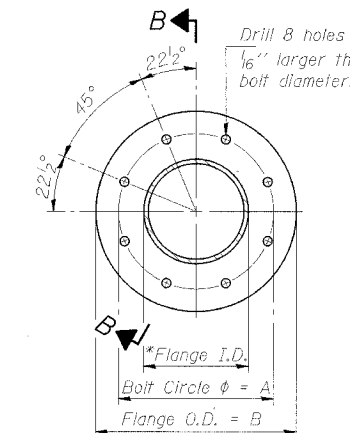
CAMBER DIAGRAM

Camber curve shown is theoretical. Actual camber attained by slope changes at splices between units.

CAMBER ATTAINMENT EXAMPLES:



TRUSS TYPES I-A, II-A, & III-A



TRUSS TYPES II-A & III-A

SPLICING FLANGES

ASTM B221, Alloy 6061-T6
or ASTM B209, Alloy 6061-T651

*To fit O.D. of Chord with maximum gap of 1/16".

NUMBER	REVISION	DATE

DESIGNED	SI
CHECKED	AS
DRAWN	MD
CHECKED	SL

EXAMINED	20
PASSED	ENGINEER OF STRUCTURAL SERVICES
	ENGINEER OF BRIDGES AND STRUCTURES

OVERHEAD SIGN STRUCTURES
ALUMINUM TRUSS DETAILS
FOR TRUSS TYPES I-A, II-A and III-A

ILLINOIS DEPARTMENT OF TRANSPORTATION
F.A.I. 80 & F.A.I. 55 INTERCHANGE

OVERHEAD SIGN STRUCTURES