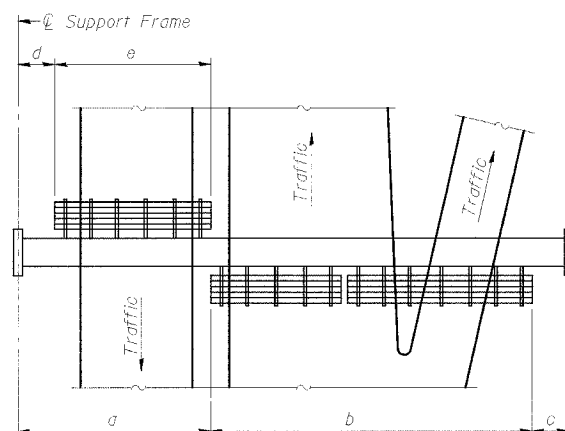


STATE OF ILLINOIS
DEPARTMENT OF TRANSPORTATION

ROUTE NO.	SECTION	COUNTY	TOTAL SHEETS	SHEET NO.
55,80	*	WILL	497	277
FED. ROAD DIST. NO. 1		ILLINOIS	FED. AID PROJECT -	
* 99-1K.B1BAC-B1				

#80906



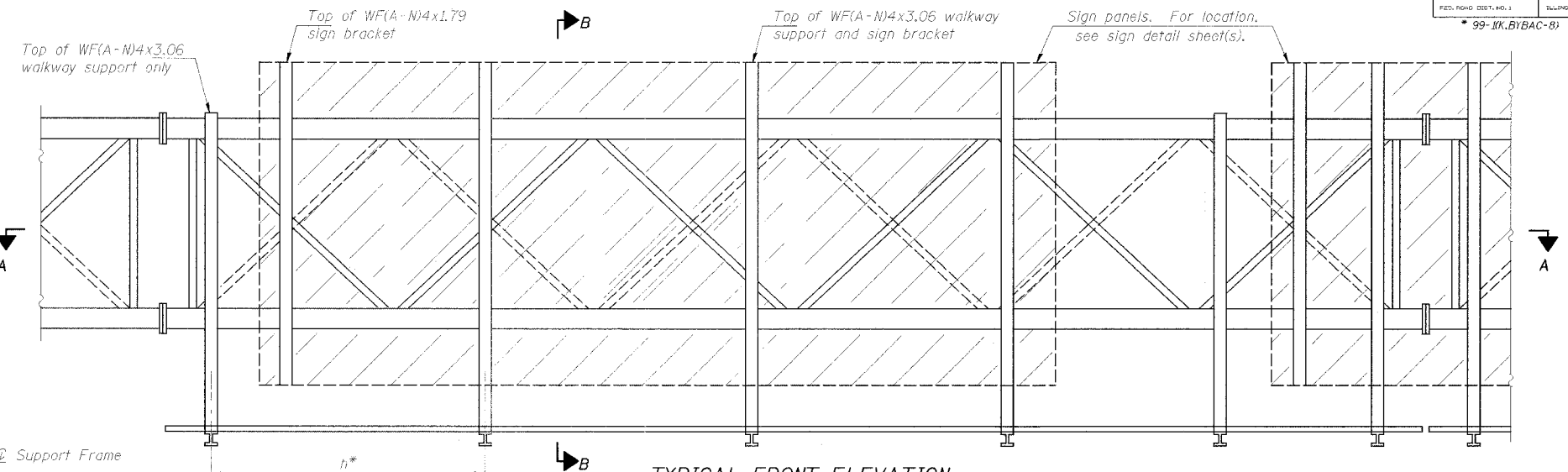
PLAN
WALKWAY AND HANDRAIL SKETCH
(Road plan beneath truss varies)

BRACKET TABLE

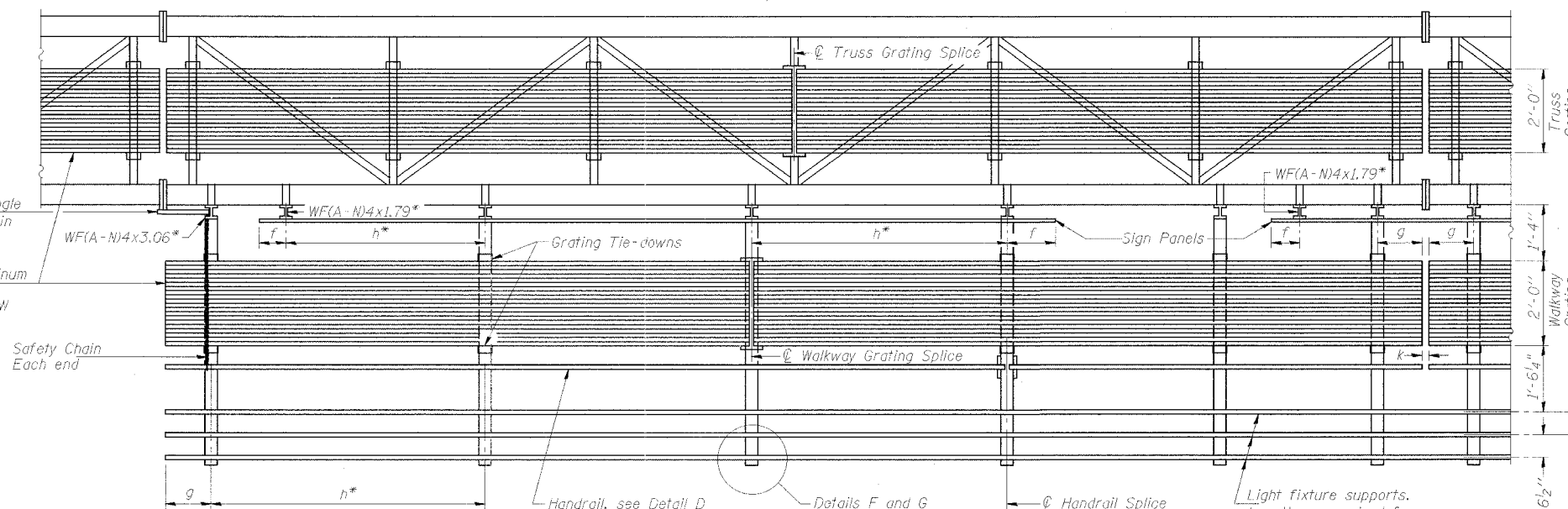
WF(A-N)4x1.79 or WF(A-N)4x3.06 ASTM B308, Alloy 6061-T6		
Sign Width		Number Brackets Required
Greater Than	Less Than or Equal To	
5'-0"	8'-0"	2
8'-0"	14'-0"	3
14'-0"	20'-0"	4
20'-0"	26'-0"	5
26'-0"	32'-0"	6

**Alternate angle
for safety chain
attachment

Standard Aluminum
Grating, see
Details T and W



TYPICAL FRONT ELEVATION
With lights and handrail omitted for clarity.
For Section B-B, see Base Sheet OS-A-10.



Walkway and Truss Grating
width dimensions are nominal
and may vary ±1/2" based on
available standard widths.

Notes: *Space walkway brackets WF(A-N)4x3.06 and sign brackets WF(A-N)4x1.79
for efficiency and within limits shown:

f = 12" maximum, 4" minimum (End of sign to center of nearest bracket)

g = 12" maximum, 4" minimum (End of walkway grating to center of nearest support bracket)

h = 6'-0" maximum (center to center of sign and/or walkway support brackets, WF(A-N)4x1.79 or WF(A-N)4x3.06)

k = 2" maximum gap between adjacent walkway grating sections and handrail ends

**If walkway bracket at safety chain location is behind sign, add angle to bracket, see Alternate
Safety Chain Attachment on Base Sheet OS-A-11.

For Details T and W, Section B-B and Grating Splice Details, see Base Sheet OS-A-10.

For Details D, F, G and P and Handrail Splice Details, see Base Sheet OS-A-11.

SECTION A-A

Handrail and walkway shall span a minimum of three brackets between splices and/or gap joints.
Place all sign and walkway brackets as close to panel points as practical.
Grating, handrail and light support splices placed as needed.

Truss grating to facilitate inspection shall run full length
(center to center of support frames) ±12" on overhead trusses.
Cost of truss grating is included in "Overhead Sign Structure".

Structure Number	Station	a	b	c	d	e	Walkway Grating and Handrail Lengths
1S0991055R249.9	1033+55	16'-6"	47'-6"	14'-0"			47'-6"
1S0991055L250.5	1074+00	16'-0"	47'-6"	10'-6"			47'-6"
1S0991080R125.8	1930+00	11'-0"	46'-0"	17'-0"			46'-0"
1S0991080L126.7	1973+35	14'-6"	42'-0"	13'-5"			42'-0"
1S0991055R249.5	1007+55	19'-6"	28'-3"	12'-3"			28'-3"
1S0991055L251.0	1100+50	12'-6"	29'-6"	36'-0"			29'-6"
1S0991080R125.3	1904+00	15'-0"	31'-6"	18'-6"			31'-6"
1S0991080L127.1	1999+85	19'-6"	29'-6"	16'-0"			29'-6"

DESIGNED SL	
CHECKED AS	
DRAWN MD	
CHECKED SL	

EXAMINED	20
PASSED	

NUMBER	REVISION	DATE

**OVERHEAD SIGN STRUCTURES
ALUMINUM WALKWAY DETAILS**

ILLINOIS DEPARTMENT OF TRANSPORTATION
F.A.I. 80 & F.A.I. 55 INTERCHANGE
OVERHEAD SIGN STRUCTURES

SGN-25