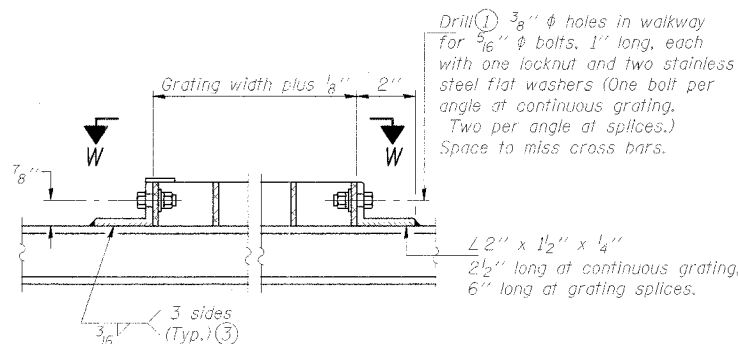
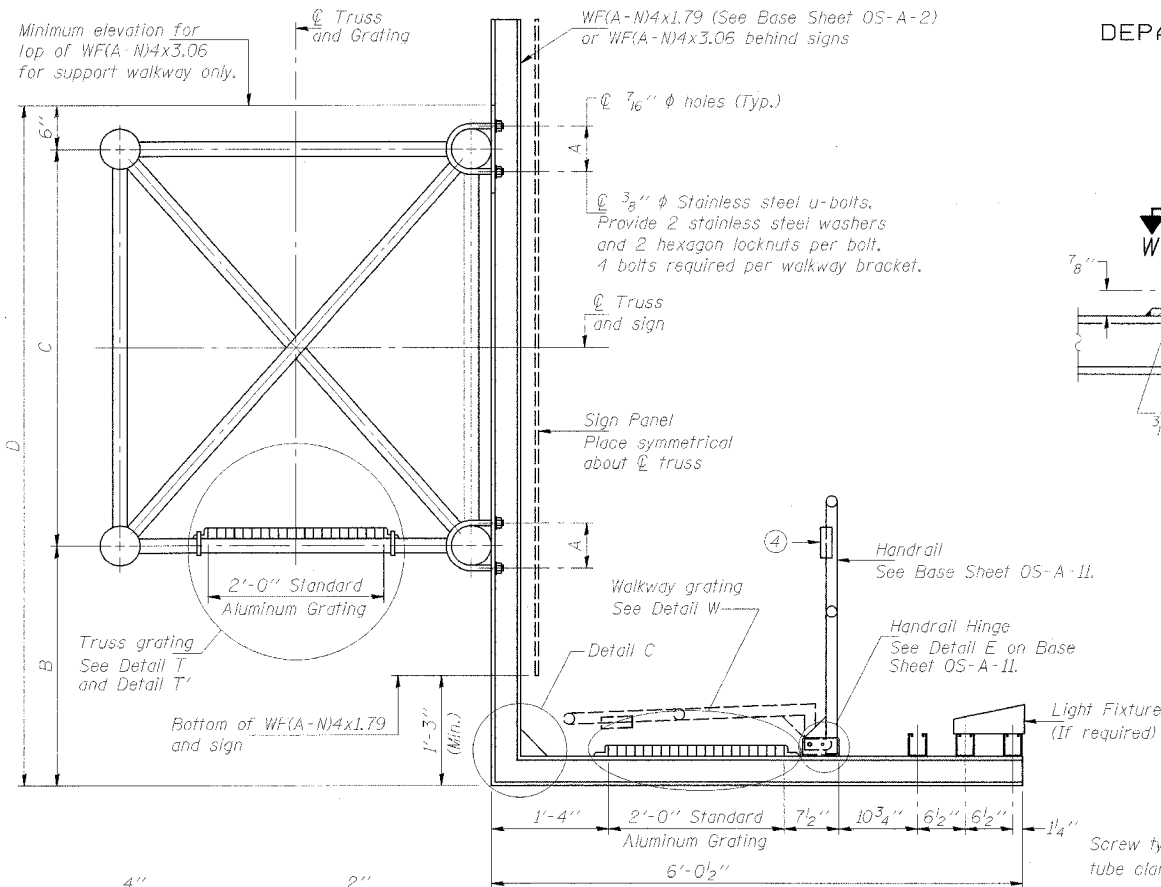


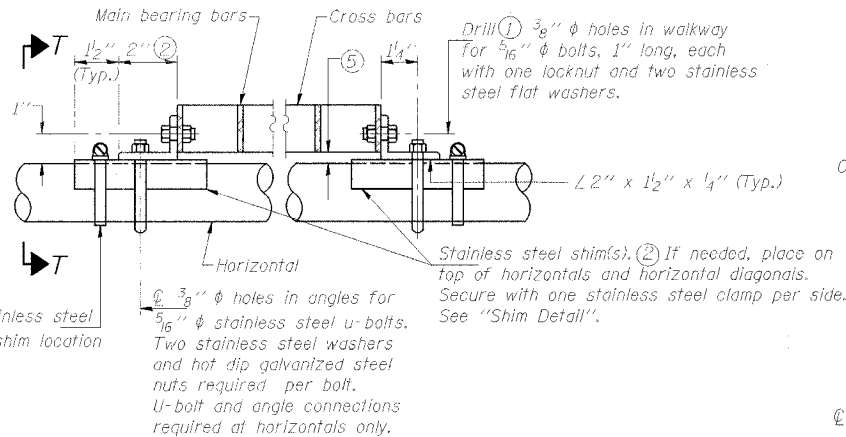
STATE OF ILLINOIS
DEPARTMENT OF TRANSPORTATION

ROUTE NO.	SECTION	COUNTY	TOTAL SHEETS	SHEET NO.
55,80	*	WILL	497	278
FED. ROAD DIST. NO. 1		ILLINOIS	FED. AID PROJECT	

#80906



DETAIL W
(Walkway grating)



DETAIL T
(Continuous Truss grating)

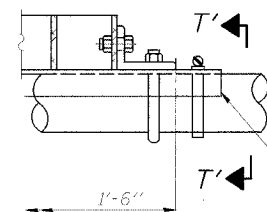
SPECIFICATIONS FOR STANDARD ALUMINUM GRATING

Main Bearing Bars shall be 3/16" x 1 1/2" on 1 3/16" centers and conform to ASTM B221 Alloy 6061-T6.
Cross bars shall be 3/16" x 1 1/2" on 4" centers and conform to ASTM B221 Alloy 6063-T5 or 6061-T6.

OR

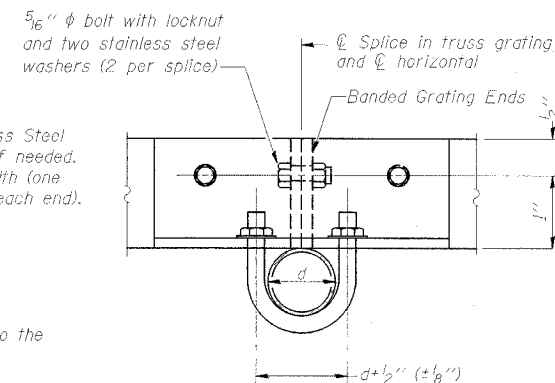
Aluminum Grating with modified "T" sections for main bearing bars shall meet the following requirements:
Main bars shall conform to ASTM B221 Alloy 6061-T6 and have a minimum section modulus equal to 0.0705 in.³ per bar, a depth of 1 1/2", spaced on 1 3/8" centers.
Cross bars shall conform to ASTM B221 Alloy 6063-T5 or T-42 and spaced on 4" centers.

Structure Number	Station	A	B	C	D
1S0991055R249.9	1033+55	5 13/32"	5'-3"	4'-6"	10'-3"
1S0991055L250.5	1074+00	5 13/32"	5'-3"	4'-6"	10'-3"
1S0991080R125.8	1930+00	5 13/32"	5'-3"	4'-6"	10'-3"
1S0991080L126.7	1973+35	5 13/32"	5'-3"	4'-6"	10'-3"
1S0991055R249.5	1007+55	5 13/32"	5'-3"	4'-6"	10'-3"
1S0991055L251.0	1100+50	5 13/32"	5'-3"	4'-6"	10'-3"
1S0991080R125.3	1904+00	5 13/32"	5'-6"	4'-6"	10'-6"
1S0991080L127.1	1999+85	5 13/32"	5'-3"	4'-6"	10'-3"

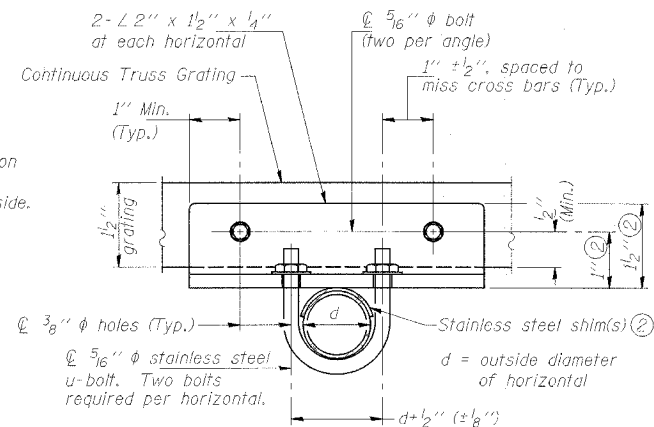


DETAIL T'

(Truss grating splice)
Details not shown same as Detail T.
Alternate materials may be used subject to the Engineer's review and approval.



SECTION T'-T'



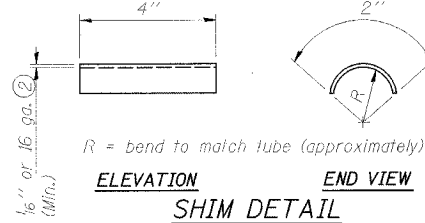
SECTION T-T

- Drilling holes in grating may be done in shop or field, based on Contractor's preference and subject to accurate alignment.
- Stainless steel shims shall be placed as shown in Detail T if needed to compensate for alignment variations between horizontal and diagonal pipes beyond adjustment provided by angles. Thicker shims may be used subject to shims performing properly.
- If Handrail Joint present, weld angle to WF(A-N)4 and 1/4" extension bars. (See Base Sheet OS-A-11.)
- 1/8" x 1/2" x 2" welded to handrail posts to protect locations that contact grating.
- Tube to grating gap may vary from 0 to 1/2" (max.) to align walkway, allow for camber, etc.

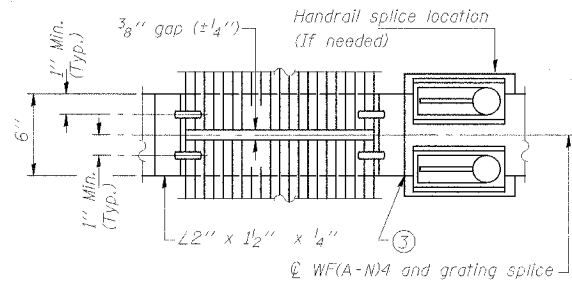
SGN-26

OVERHEAD SIGN STRUCTURES
ALUMINUM WALKWAY DETAILS

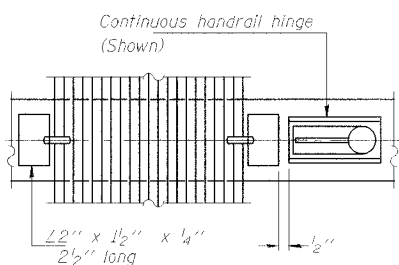
ILLINOIS DEPARTMENT OF TRANSPORTATION
F.A.I. 80 & F.A.I. 55 INTERCHANGE
OVERHEAD SIGN STRUCTURES



SECTION B-B

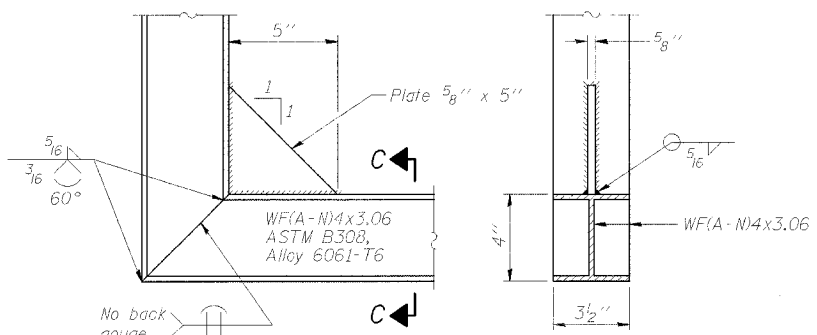


(AT WALKWAY GRATING SPLICE)



(CONTINUOUS WALKWAY GRATING)

SECTION C-C



DETAIL C

(See Detail P, Base Sheet OS-A-11.)

DESIGNED	SL	EXAMINED	20
CHECKED	AS	PASSED	
DRAWN	MD		
CHECKED	SL		

NUMBER	REVISION	DATE