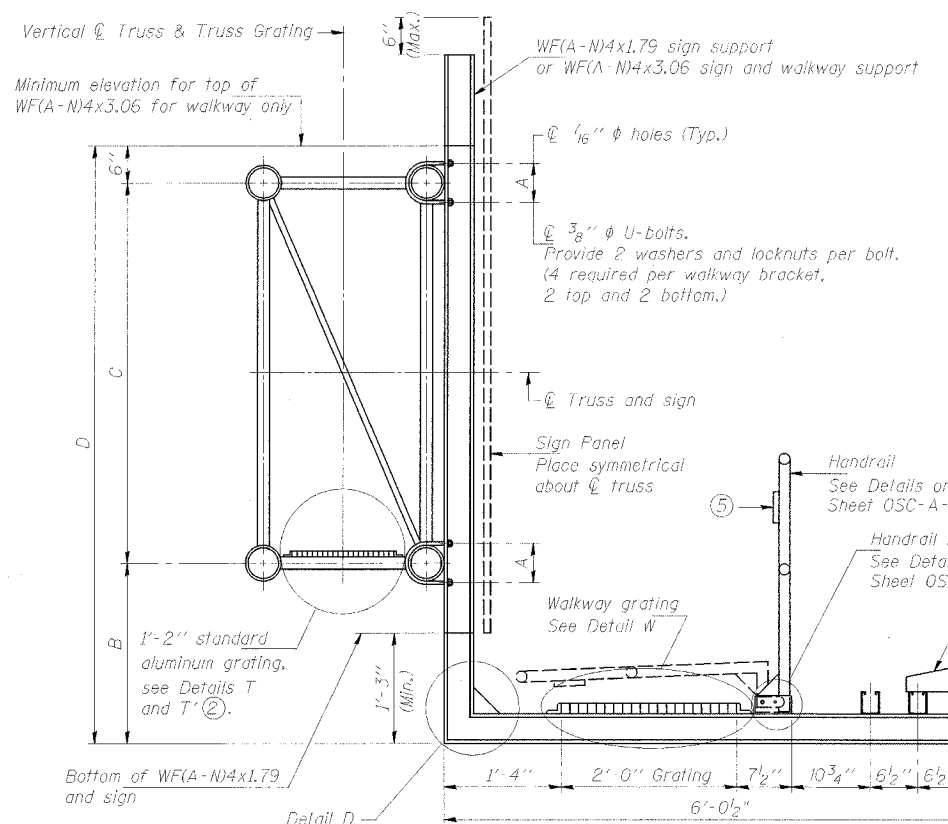


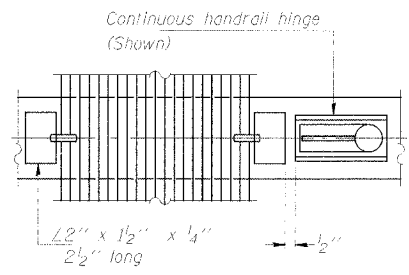
STATE OF ILLINOIS  
DEPARTMENT OF TRANSPORTATION

ROUTE NO.	SECTION	COUNTY	SHEET NO.	SHEET
55,80	*	WILL	497	288
FED. ROAD DIST. NO. 3		BUILDING	FED. AID PROJECT	
* 99-11K, BYBAC-8)				

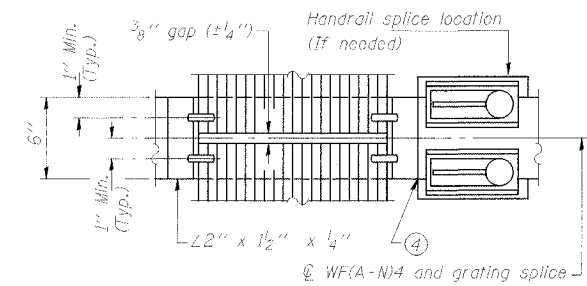
#80906



SECTION B-B

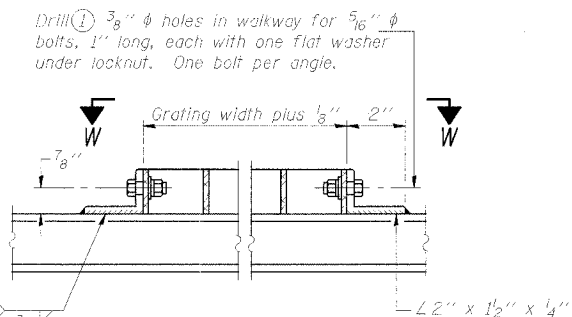


(CONTINUOUS WALKWAY GRATING)

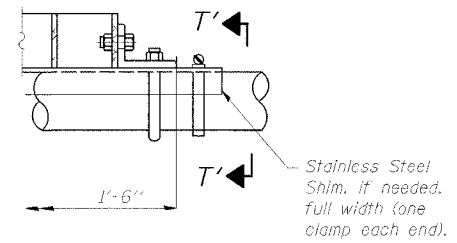


(AT WALKWAY GRATING SPLICE)

SECTION W-W

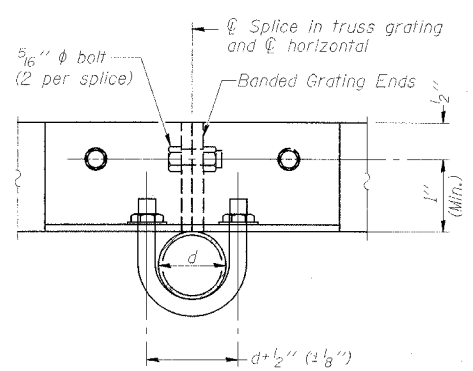


DETAIL W  
(Walkway grating)

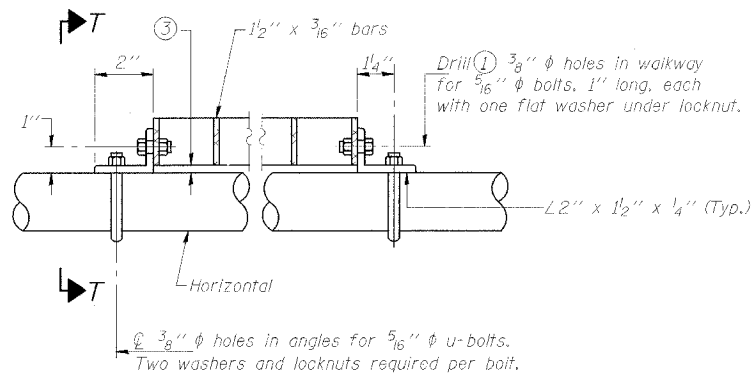


DETAIL T'

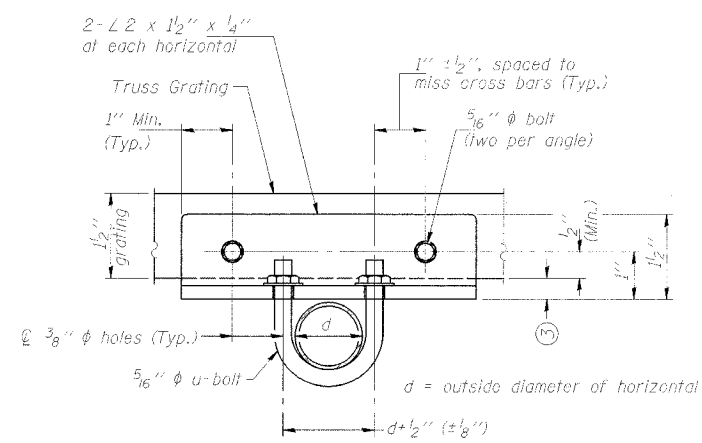
(Truss grating splice)  
Details not shown same as Detail T.  
Alternate materials may be used subject to the Engineer's review and approval.



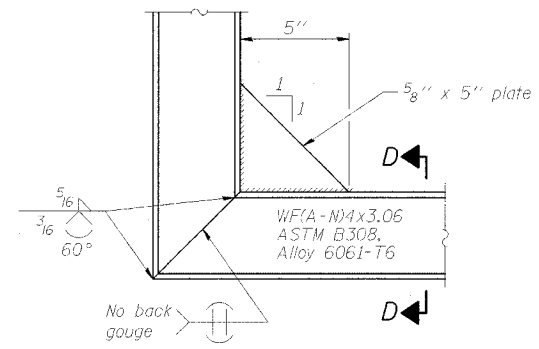
SECTION T'-T'



DETAIL T  
(Truss grating at horizontal)

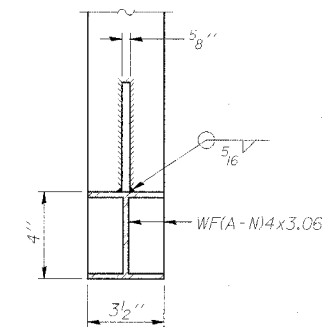


SECTION T-T'



DETAIL D

(See Detail P, Base Sheet OSC-A-8.)



SECTION D-D

NUMBER	REVISION	DATE

DESIGNED	SL	20
CHECKED	AS	EXAMINED
DRAWN	MD	PASSED
CHECKED	SL	ENGINEER OF BRIDGES AND STRUCTURES

- Drilling holes in grating may be done in shop or field, based on Contractor's preference and subject to accurate alignment.
- When truss grating must be spliced, use suggested detail or other methods subject to the Engineer's review and approval. Locate splice to avoid interference between cross bars and bolt locations.
- Tube to grating gap may vary from 0 to 1/2" (Max.) to align walkway, allow for camber, etc.
- If Handrail Joint present, weld angle to WF(A-N)4 and 1/4" extension bars. (See Base Sheet OSC-A-8)
- 1/2" x 1/2" x 2" welded to handrail posts to protect locations that contact grating.

Structure Number	Station	A	B	C	D
IC099I080L126.1	1945+80	8 13/32"	4'-6"	5'-6"	10'-6"
IC099I080R126.3	1952+30	8 13/32"	4'-6"	5'-6"	10'-6"
IC099I055R248.9	981+55	8 13/32"	4'-0"	7'-0"	11'-6"
IC099I055L251.5	1125+50	8 13/32"	4'-0"	7'-0"	11'-6"
IC099I080R124.8	1877+00	8 13/32"	4'-0"	7'-0"	11'-6"
IC099I080L127.6	2026+00	8 13/32"	4'-3"	7'-0"	11'-9"
IC099I055R250.7	1079+00	8 13/32"	5'-0"	7'-0"	12'-6"

NOT IN CONTRACT-FOR INFORMATION ONLY

CANTILEVER SIGN STRUCTURES  
WALKWAY DETAILS  
ALUMINUM TRUSS & STEEL POST  
ILLINOIS DEPARTMENT OF TRANSPORTATION  
F.A.I. 80 & F.A.I. 55 INTERCHANGE  
OVERHEAD SIGN STRUCTURES CANTILEVER