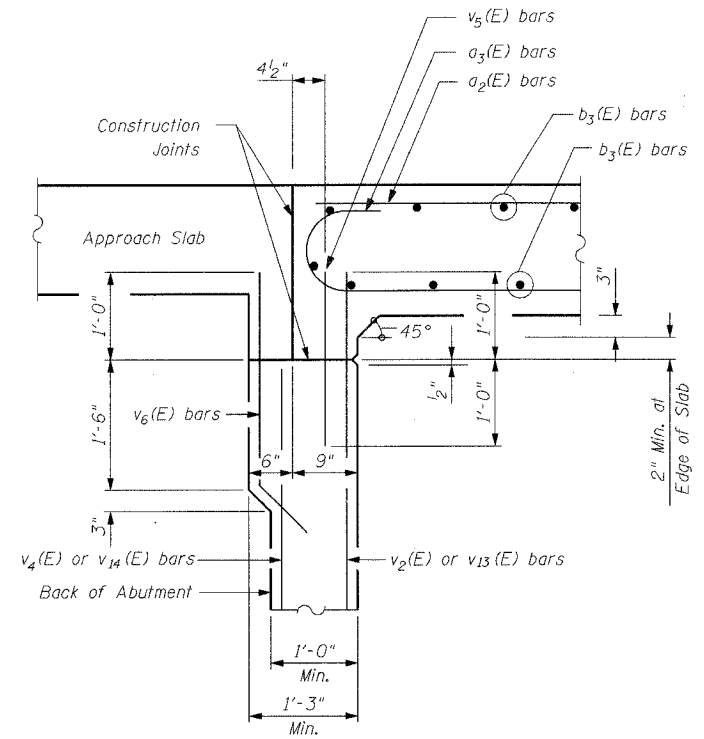
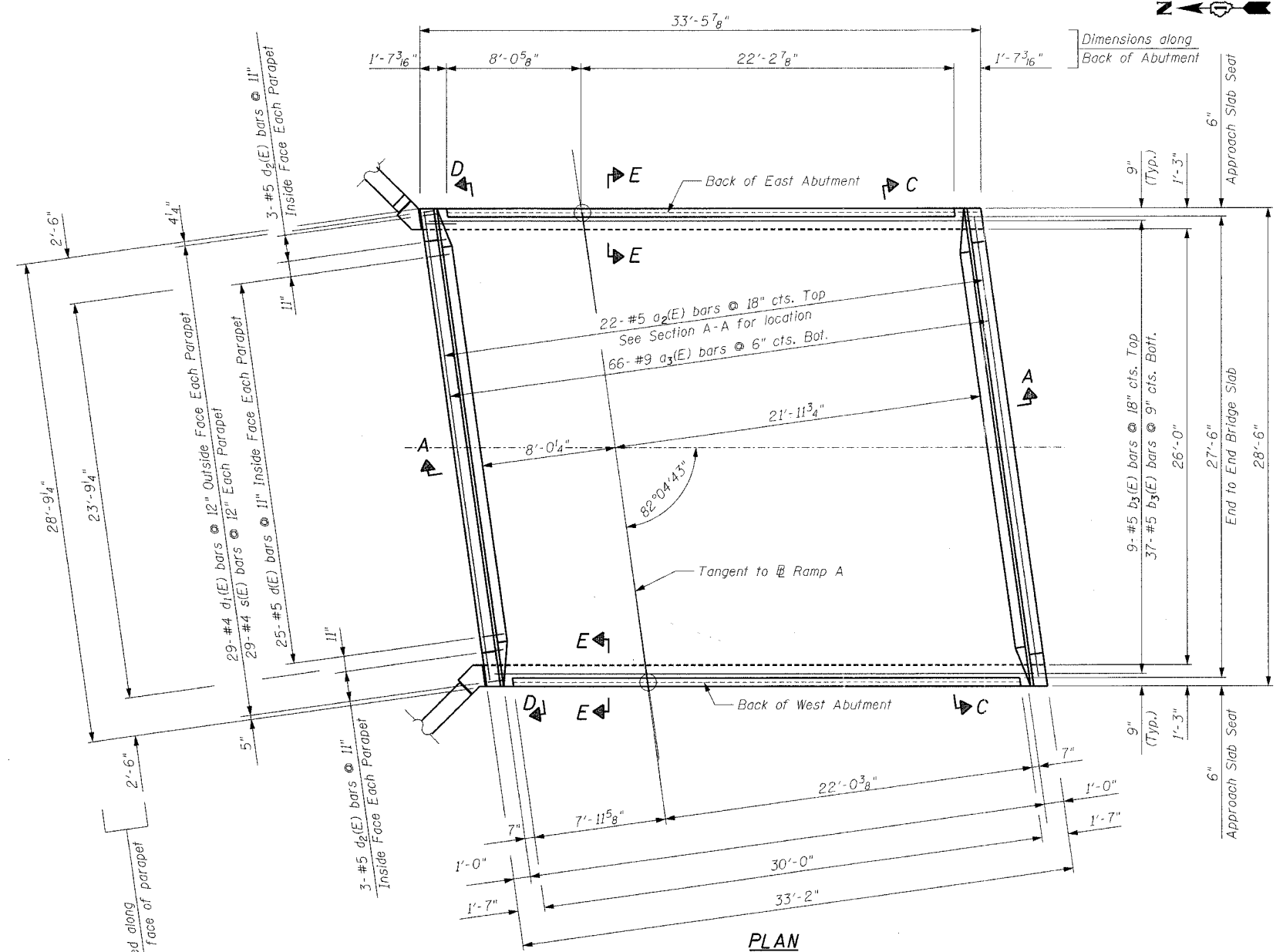
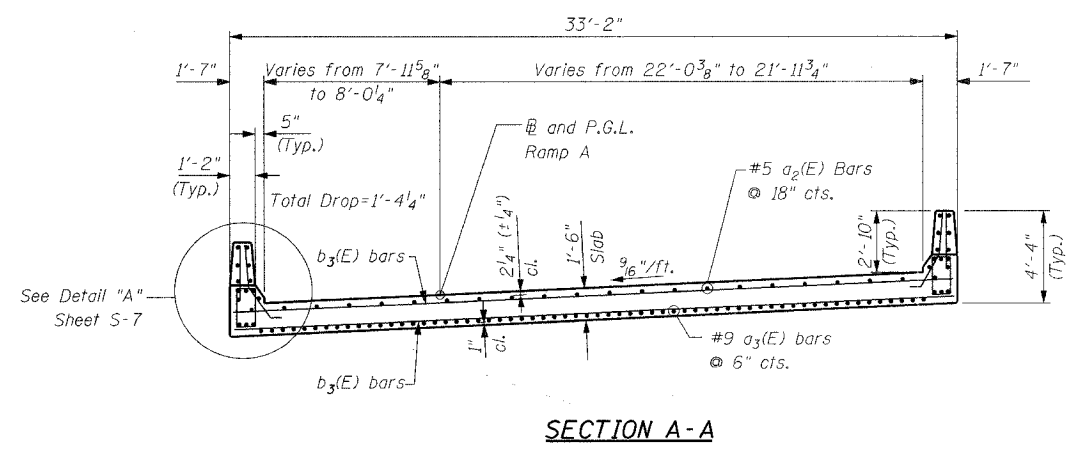


F.A.I. RTE.	SECTION	COUNTY	TOTAL SHEETS	SHEET NO.
80	99-10(K,BY&AC-B)	COOK	497	305
STA.	TO STA.			
FED. ROAD DIST. NO.	ILLINOIS	FED. AID PROJECT		
Sheet S-6 of S-21			CONTRACT 80906	



SECTION E-E



SECTION A-A

**Notes:**

Reinforcement bars designated (E) shall be epoxy coated.  
For Bill of Material and Superstructure Details See Sheet S-7.

REVISIONS	
NAME	DATE

**Ciorba Group, Inc.**  
CONSULTING ENGINEERS  
3007 NORTH CUMBERLAND AVENUE - CHICAGO, ILLINOIS 60664 - (773) 775-4000

ILLINOIS DEPARTMENT OF TRANSPORTATION  
RAMP A DECK SLAB  
FAI-80 OVER WEST FRONTAGE ROAD  
FAI-80 SECTION 99-1 (K,BY & AC-B)  
WILL COUNTY  
FAI-80 STA. 1931+99.35  
STRUCTURE NO. 099-0042, 099-0043, 099-0308  
SCALE: NONE  
DATE: OCTOBER 2004

DRAWN BY BWS & IMG  
CHECKED BY GDW

DATE: 10/20/05  
FILENAME: n:\proj\2890\2890-02\design\structural\2890-02-06-ramp-a-deck.dgn