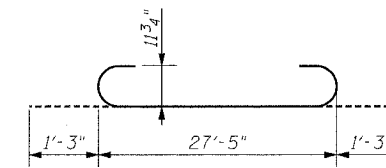
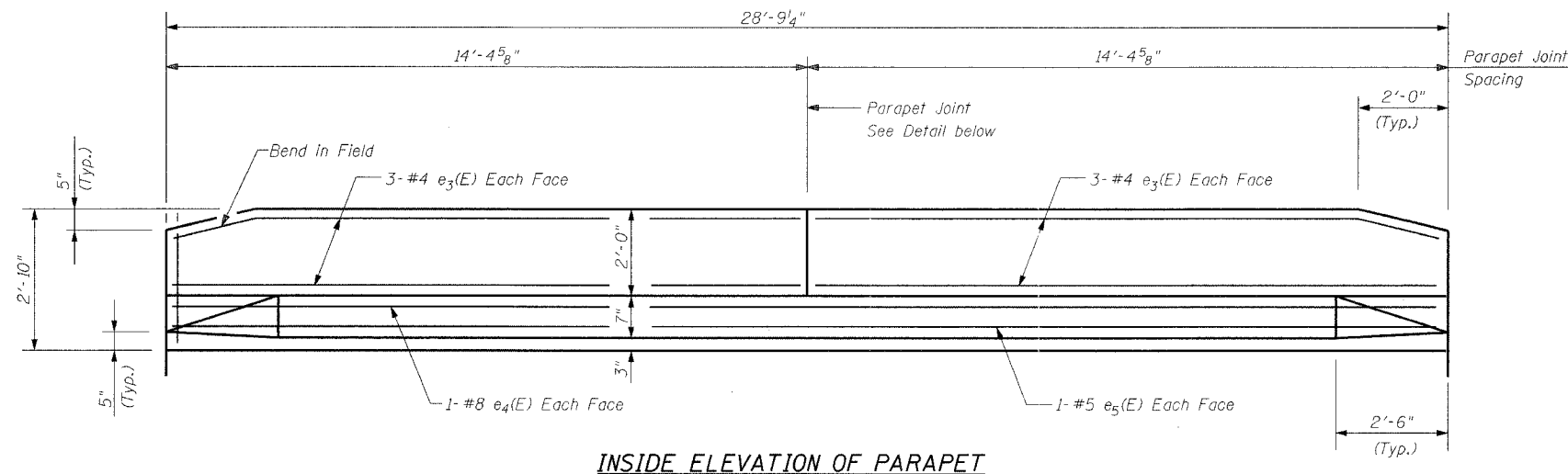


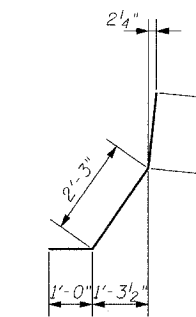
F.A.I. RTE.	SECTION	COUNTY	TOTAL SHEETS	SHEET NO.
80	99-1(K, BY&AC-B)	COOK	497	306
STA.	TO STA.			
FED. ROAD DIST. NO.	ILLINOIS	FED. AID PROJECT		
Sheet S-7 of S-21			CONTRACT 80906	



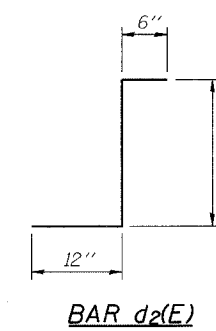
BARS a<sub>3</sub>(E)

**SUPERSTRUCTURE BILL OF MATERIAL**

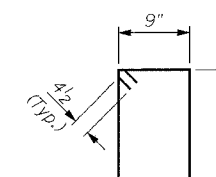
Bar	No.	Size	Length	Shape
a <sub>2</sub> (E)	22	#5	27'-0"	—
a <sub>3</sub> (E)	66	#9	29'-11"	—
b <sub>3</sub> (E)	56	#5	33'-1"	—
d(E)	50	#5	5'-0"	—
d <sub>1</sub> (E)	58	#4	3'-0"	—
d <sub>2</sub> (E)	12	#5	3'-2"	—
e <sub>3</sub> (E)	24	#4	14'-1"	—
e <sub>4</sub> (E)	4	#8	28'-4"	—
e <sub>5</sub> (E)	4	#5	28'-4"	—
s(E)	58	#4	6'-9"	—
Item	Unit	Quantity		
Reinforcement Bars, Epoxy Coated	Pound	10,740		
Concrete Superstructure	Cu. Yd.	59.7		
Protective Coat	Sq. Yd.	24		
Bridge Deck Grooving	Sq. Yd.	89		



BARS d(E)

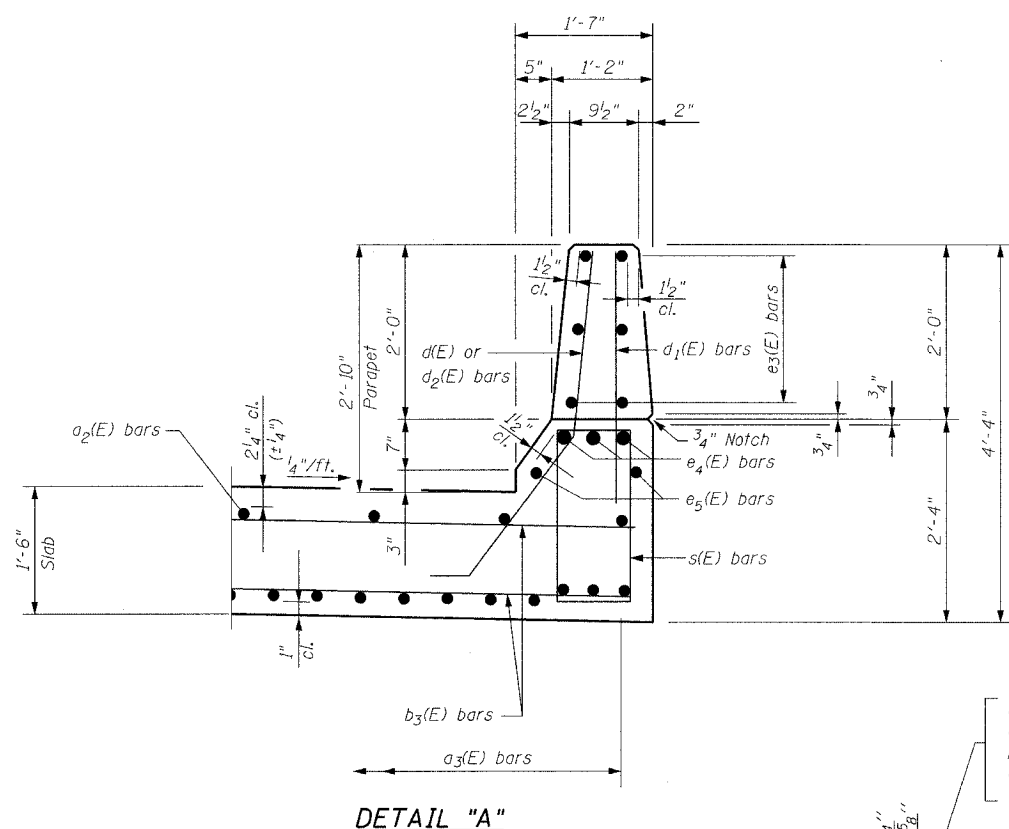


BAR d<sub>2</sub>(E)

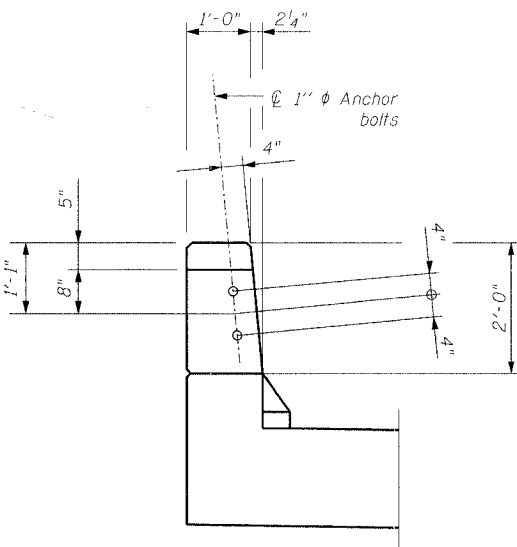


BARS s(E)

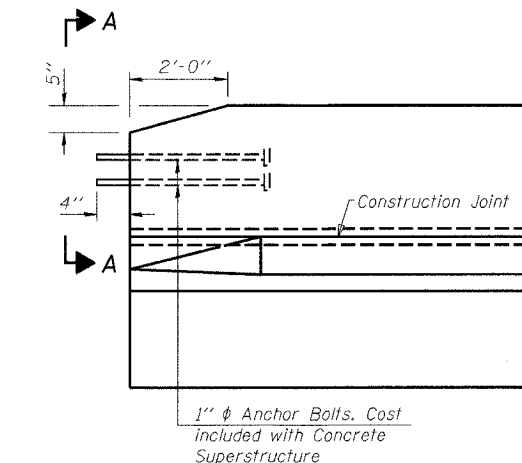
**INSIDE ELEVATION OF PARAPET**



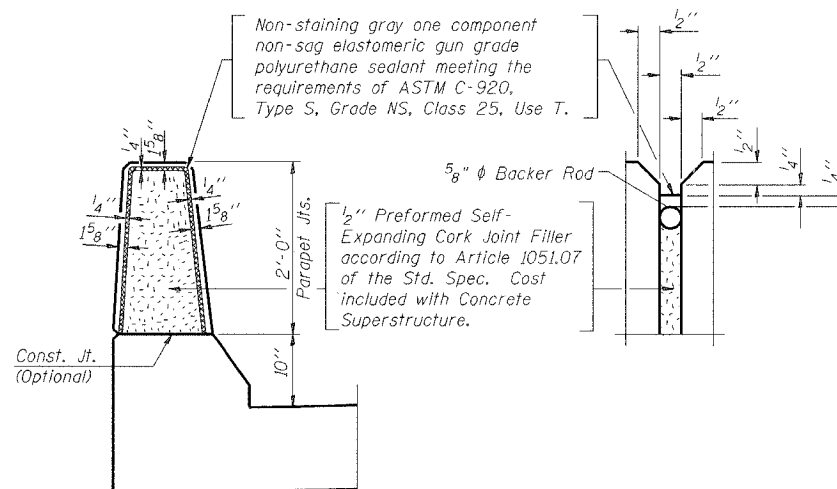
**DETAIL "A"**



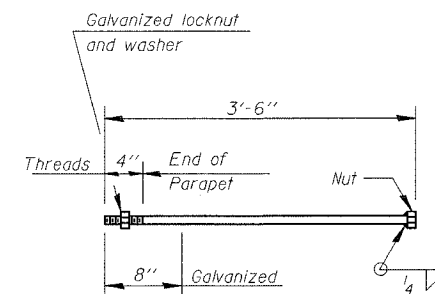
**VIEW A-A**



**PARTIAL ELEVATION NORTHWEST PARAPET**



**PARAPET JOINT DETAILS**



**1"φ ANCHOR BOLT**  
(Cost included with Concrete Superstructure)

REVISIONS	
NAME	DATE

**Clorba Group, Inc.**  
CONSULTING ENGINEERS  
2007 NORTH CUMBERLAND AVENUE • CHICAGO, ILLINOIS 60668 • (773) 778-4000

ILLINOIS DEPARTMENT OF TRANSPORTATION  
RAMP A SUPERSTRUCTURE DETAILS  
FAI-80 OVER WEST FRONTAGE ROAD  
FAI-80 SECTION 99-1 (K, BY & AC-B)  
WILL COUNTY  
FAI-80 STA. 1931+99.35  
STRUCTURE NO. 099-0042, 099-0043, 099-0308  
SCALE: NONE  
DATE: OCTOBER 2004

DRAWN BY IMC  
CHECKED BY GDW