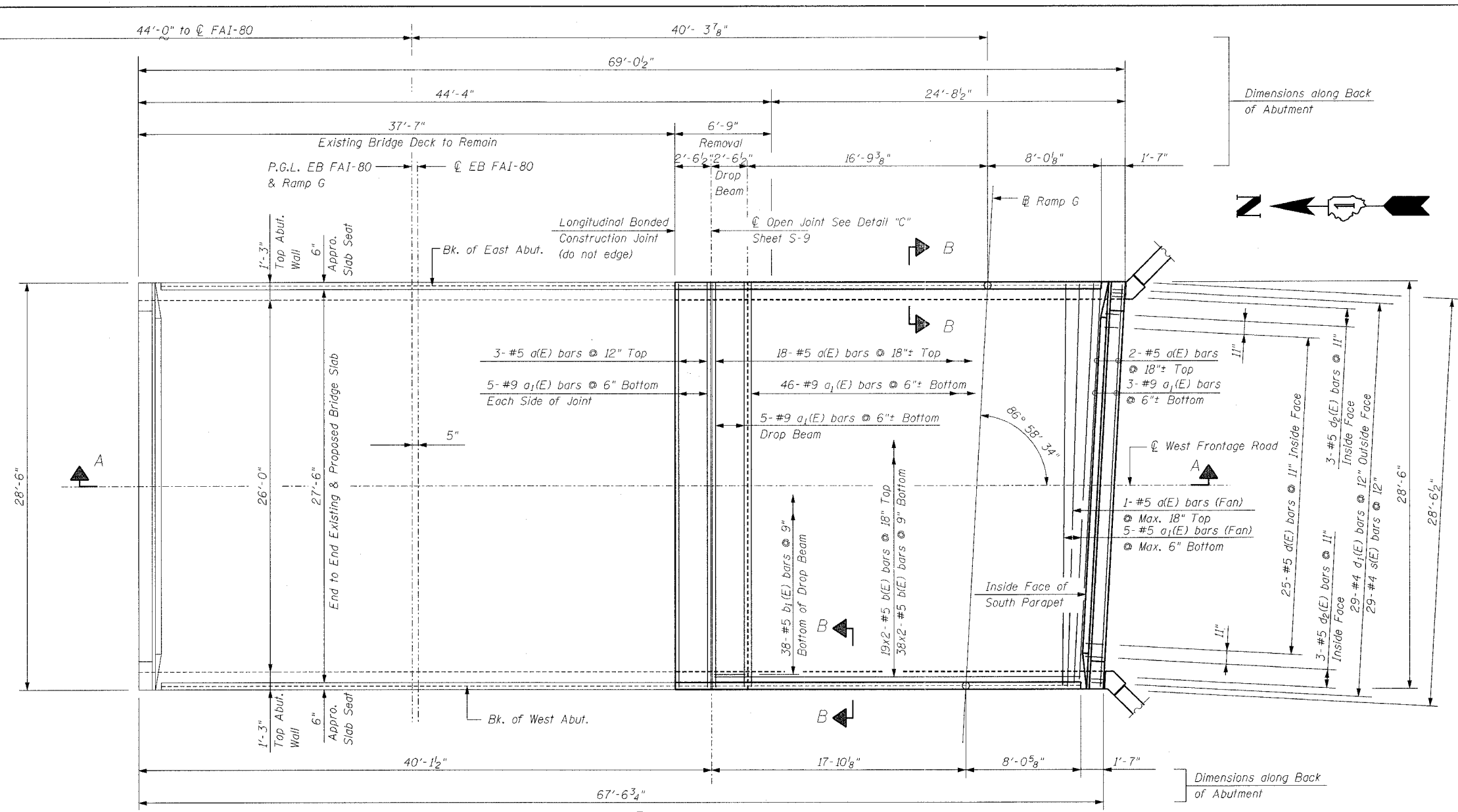
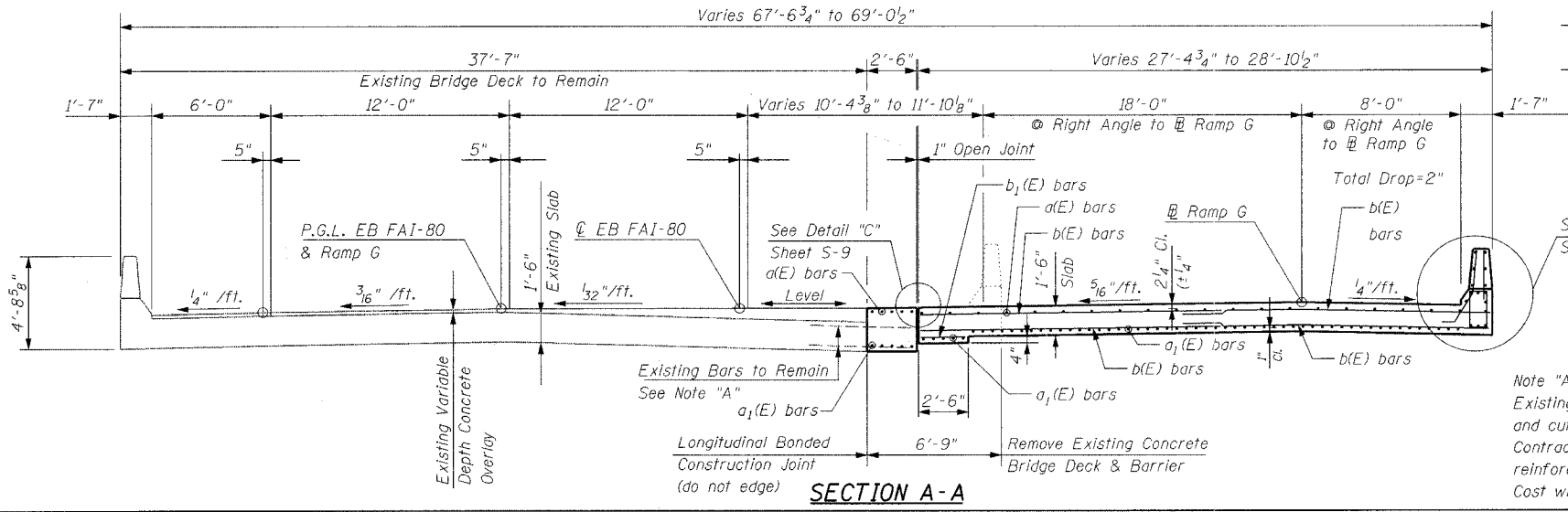
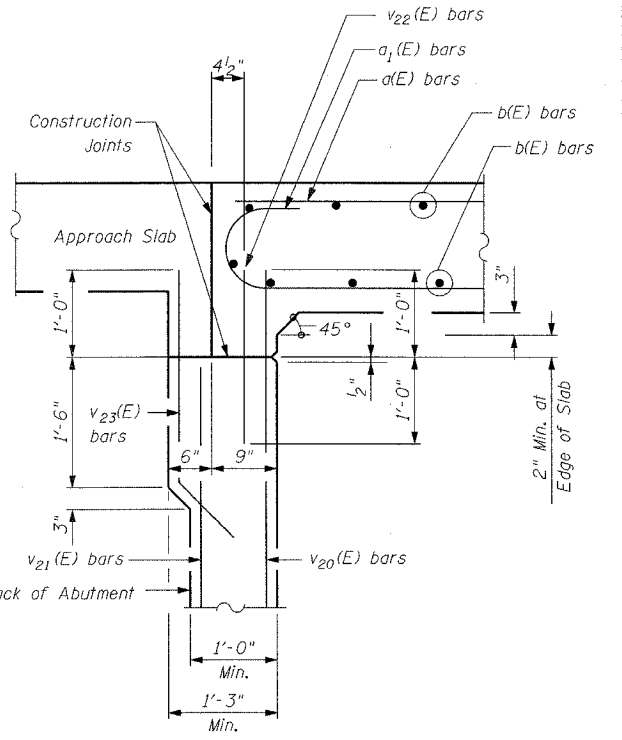


F.A.I. RTE.	SECTION	COUNTY	TOTAL SHEETS	SHEET NO.
80	99-1(K, BY & AC-B)	COOK	497	307
STA.	TO STA.			
FED. ROAD DIST. NO.	ILLINOIS	FED. AID PROJECT		
Sheet S-8 of S-21			CONTRACT 80906	



Notes:
 See Sheet S-8 for superstructure details, parapet reinforcement and Bill of Material.
 Reinforcement bars designated (E) shall be epoxy coated.
 Bars indicated thus 20 x 3- #5 etc. indicates 20 lines of bars with 3 lengths per line.
 Minimum lap splice shall be 2'-2" for #5 bars.



Note "A":
 Existing bars to remain in place, blast clean and cut to extend 2'-4" in new concrete. Contractor shall repair or replace any damaged reinforcement bars during concrete removal. Cost will be included in "Concrete Removal".

REVISIONS	
NAME	DATE

Clorba Group, Inc.
 CONSULTING ENGINEERS
 2807 NORTH CUMBERLAND AVENUE - CHICAGO, ILLINOIS 60658 - (773) 775-6000

ILLINOIS DEPARTMENT OF TRANSPORTATION
 EASTBOUND FAI-80 & RAMP G DECK SLAB
 FAI-80 OVER WEST FRONTAGE ROAD
 FAI-80 SECTION 99-1 (K, BY & AC-B)
 WILL COUNTY
 FAI-80 STA. 1931+99.35
 STRUCTURE NO. 099-0042, 099-0043, 099-0308
 SCALE: NONE DRAWN BY IMG
 DATE: OCTOBER 2004 CHECKED BY GDW

DATE: 10/20/05 FILENAME: n:\proj\2890\2890-02\design\structural\2890-02-s-08-ramp-g-deck.dgn