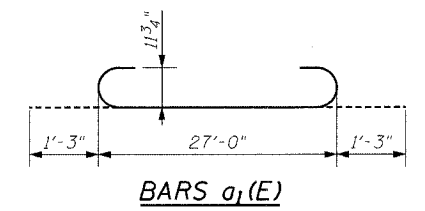
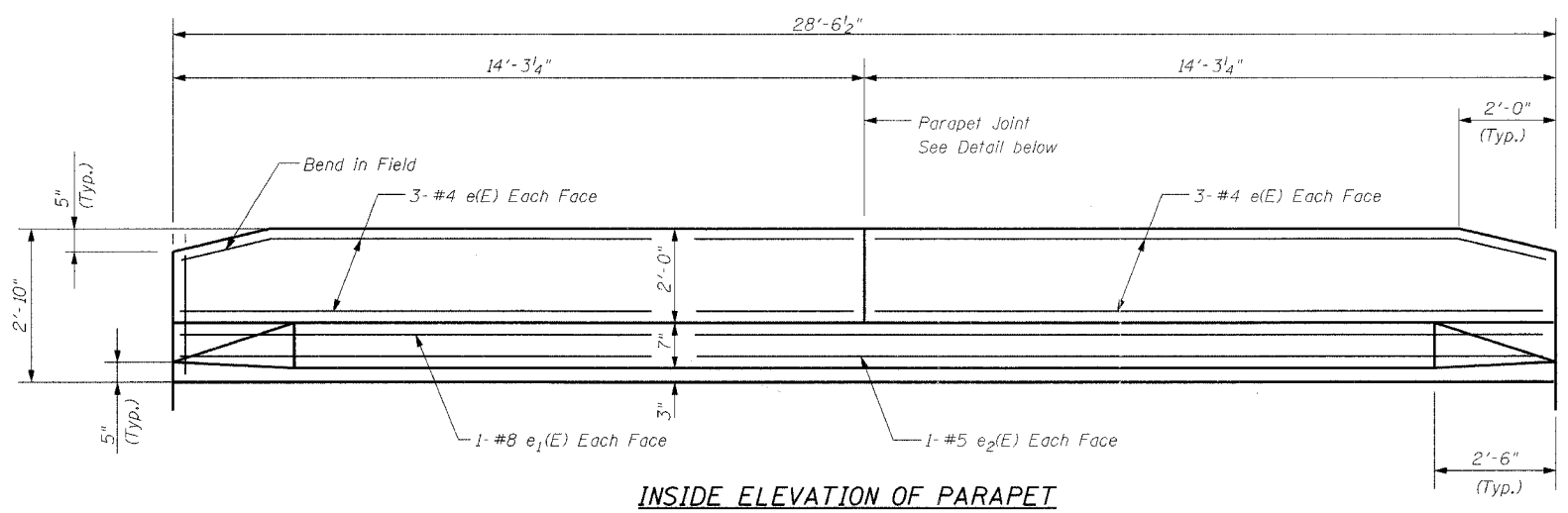
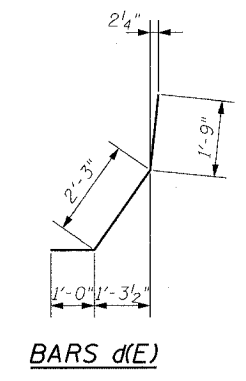


F.A.I. RTE.	SECTION	COUNTY	TOTAL SHEETS	SHEET NO.
80	99-10(K,BY&AC-B)	COOK	497	308
STA.	TO STA.			
FED. ROAD DIST. NO.	ILLINOIS	FED. AID PROJECT		
Sheet S-9 of S-21	CONTRACT 80906			



BARS a₁(E)



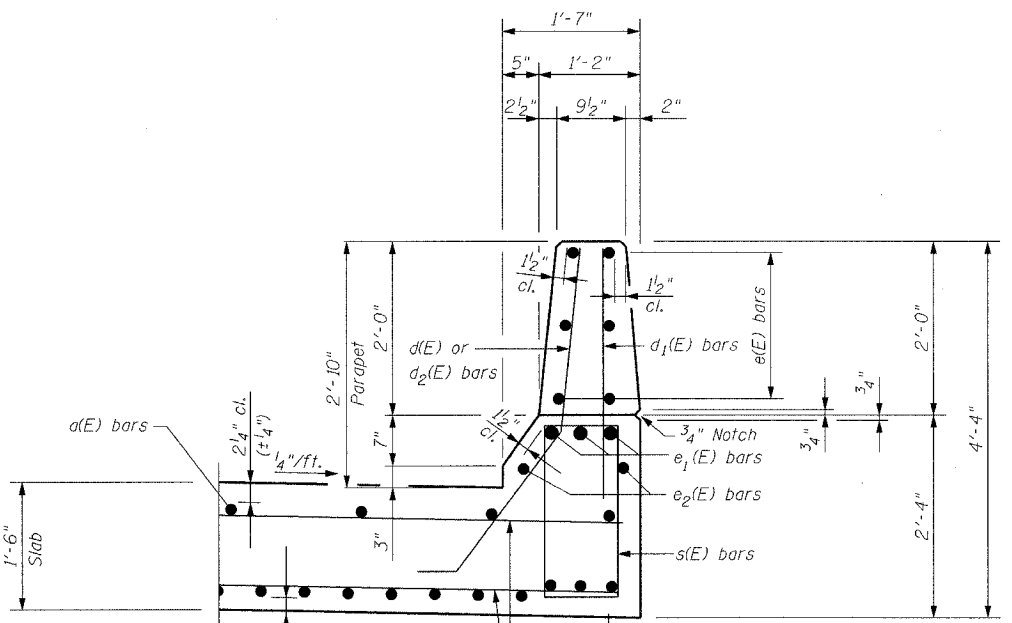
BARS d(E)

**SUPERSTRUCTURE
BILL OF MATERIAL**

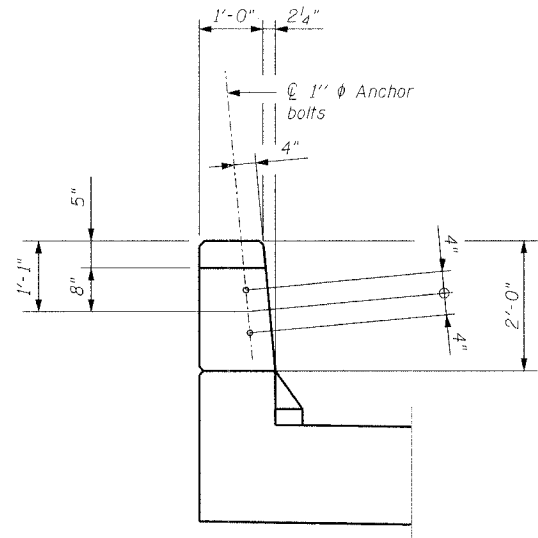
Bar	No.	Size	Length	Shape
d(E)	24	#5	27'-0"	—
a ₁ (E)	64	#9	29'-6"	—
b(E)	114	#5	15'-5"	—
b ₁ (E)	38	#5	2'-0"	—
d(E)	25	#5	5'-0"	J
d ₁ (E)	29	#4	3'-0"	—
d ₂ (E)	6	#5	3'-2"	L
e(E)	12	#4	14'-0"	—
e ₁ (E)	2	#8	28'-2"	—
e ₂ (E)	2	#5	28'-2"	—
s(E)	29	#4	6'-9"	□

Item	Unit	Quantity
Concrete Removal	Cu. Yd.	19.1
Reinforcement Bars, Epoxy Coated	Pound	9,730
Concrete Superstructure	Cu. Yd.	54.6
Protective Coat	Sq. Yd.	23
Bridge Deck Grooving	Sq. Yd.	89

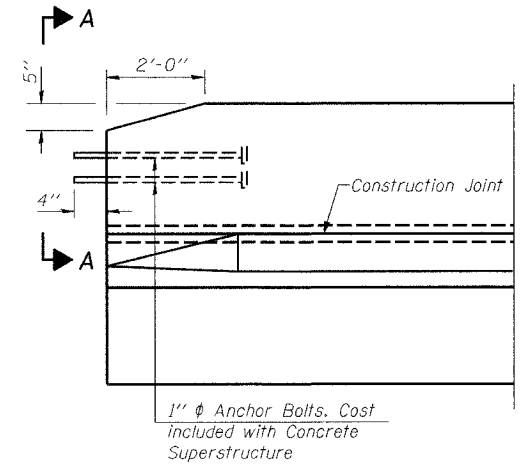
Reinforcement bars designated (E) shall be epoxy coated.



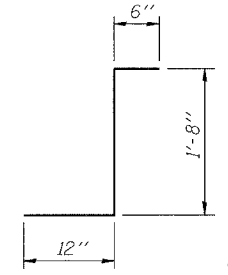
DETAIL "B"



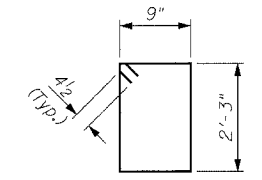
VIEW A-A



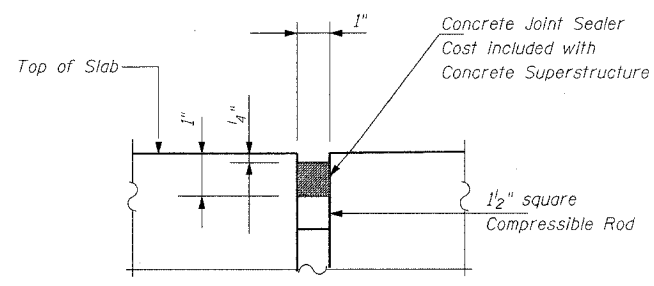
PARTIAL ELEVATION SOUTHEAST PARAPET



BAR d₂(E)

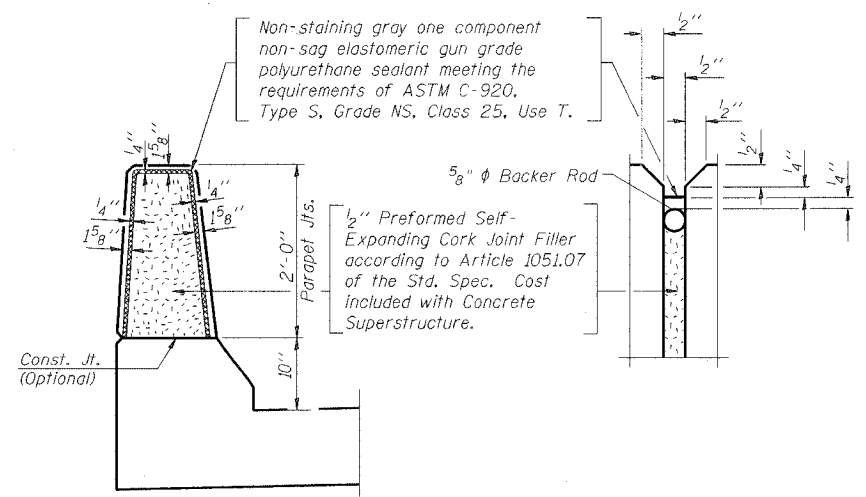


BAR s(E)

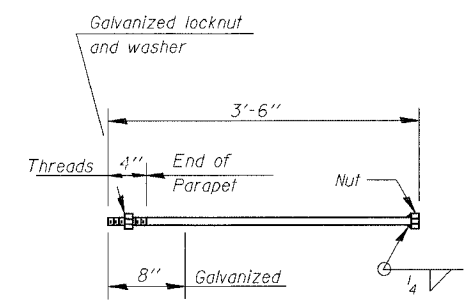


DETAIL "C"

For Location of Detail "C" See Sheet S-8



PARAPET JOINT DETAILS



1" ANCHOR BOLT
(Cost included with Concrete Superstructure)

REVISIONS	
NAME	DATE

Clorba Group, Inc.
CONSULTING ENGINEERS
300 NORTH CUMBERLAND AVENUE - CHICAGO, ILLINOIS 60610 - (773) 733-1000

ILLINOIS DEPARTMENT OF TRANSPORTATION
RAMP G SUPERSTRUCTURE DETAILS
FAI-80 OVER WEST FRONTAGE ROAD
FAI-80 SECTION 99-1 (K,BY & AC-B)
WILL COUNTY
FAI-80 STA. 1931+99.35
STRUCTURE NO. 099-0042, 099-0043, 099-0308
SCALE: NONE
DATE: OCTOBER 2004

DRAWN BY IMG
CHECKED BY GDW

DATE: 10/20/05
FILENAME: n:\proj\2890\2890-02\design\structural\2890-02-s-09-ramp-g-check.dgn