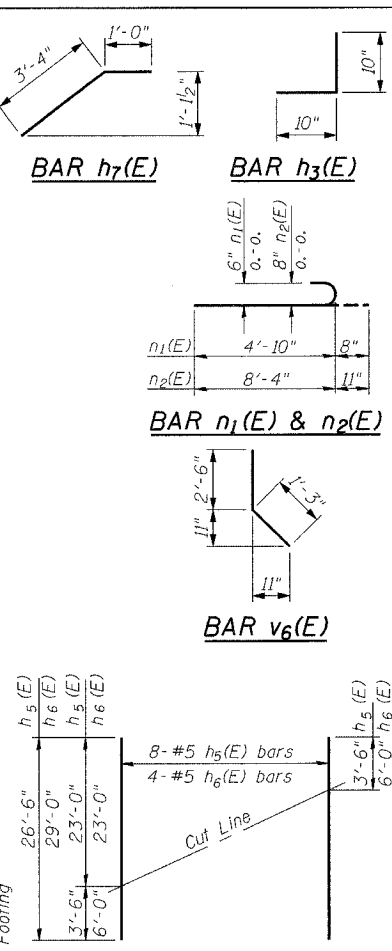
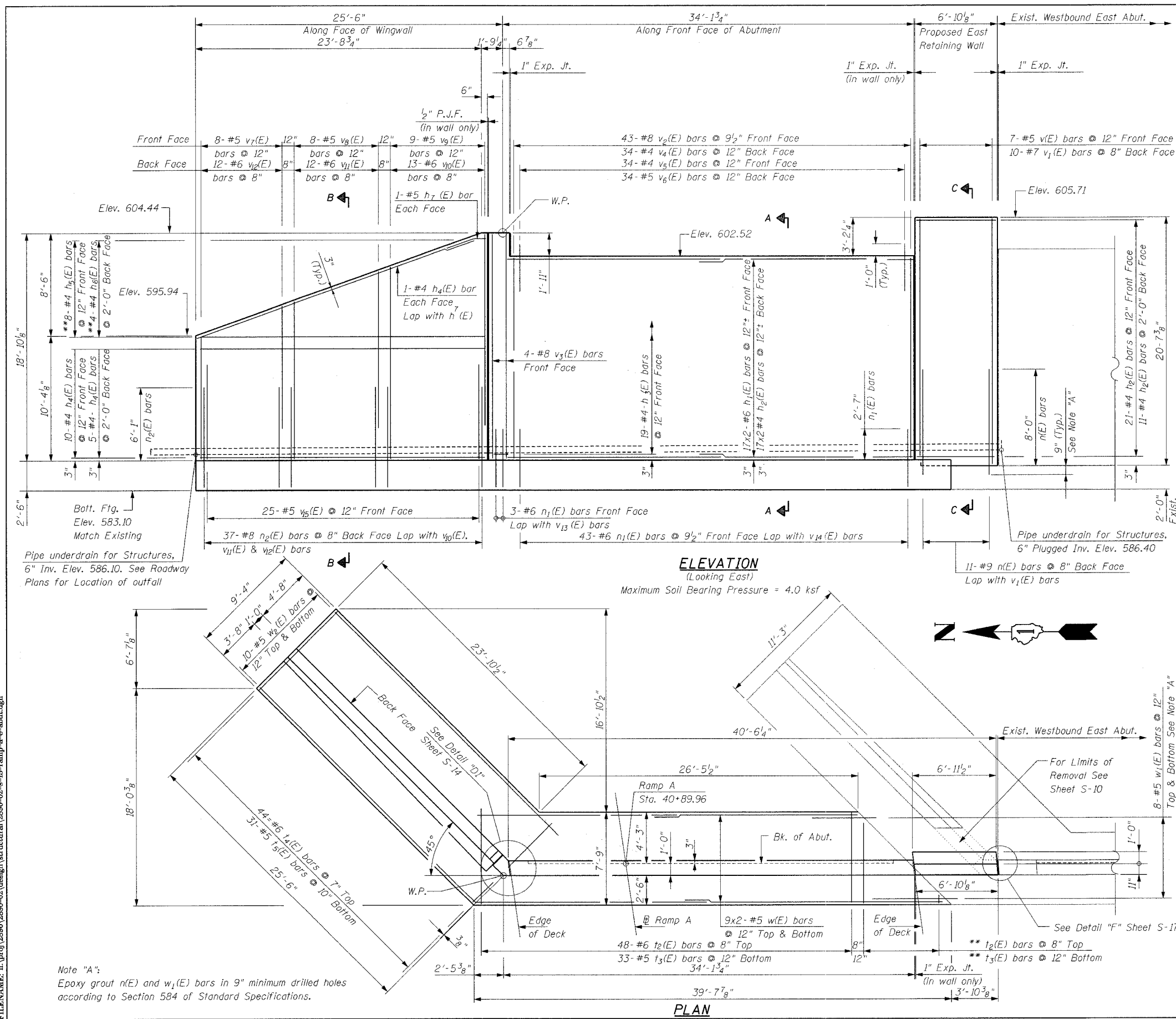


F.A.I. SECTION	COUNTY	TOTAL SHEETS	SHEET NO.
BD 99-1K, BY & AC-BI	COOK	497	312
STA. TO STA.			
FED. ROAD DIST. NO. ILLINOIS FED. AID PROJECT			
Sheet S-13 of S-21 CONTRACT 80906			



**BILL OF MATERIAL**

Bar	No.	Size	Length	Shape
h(E)	68	#6	18'-4"	
h1(E)	68	#4	17'-10"	
h2(E)	32	#4	6'-7"	
h3(E)	39	#4	1'-8"	J
h4(E)	34	#4	23'-10"	
h5(E)	8	#5	26'-6"	
h6(E)	4	#5	29'-0"	
h7(E)	4	#4	4'-4"	
h8(E)	32	#4	4'-9"	
n(E)	19	#9	8'-9"	
n1(E)	92	#6	5'-6"	
n2(E)	74	#8	9'-3"	
t2(E)	102	#6	7'-3"	
t3(E)	70	#5	7'-3"	
t4(E)	88	#6	8'-10"	
t5(E)	62	#5	8'-10"	
v(E)	13	#5	20'-3"	
v1(E)	18	#7	20'-3"	
v2(E)	43	#8	17'-11"	
v3(E)	8	#8	18'-5"	
v4(E)	34	#4	16'-9"	
v5(E)	68	#4	2'-0"	
v6(E)	68	#5	3'-9"	
v7(E)	16	#5	9'-11"	
v8(E)	16	#5	12'-9"	
v9(E)	18	#5	15'-7"	
v10(E)	26	#6	15'-7"	
v11(E)	24	#6	12'-9"	
v12(E)	24	#6	9'-11"	
v13(E)	43	#8	16'-6"	
v14(E)	34	#4	16'-6"	
v15(E)	50	#5	5'-0"	
w(E)	72	#5	20'-10"	
w1(E)	32	#5	5'-0"	
w2(E)	40	#5	25'-0"	
Item	Unit	Quantity		
Concrete Structures	Cu. Yd.	179.3		
Reinforcement Bars, Epoxy Coated	Pound	22,840		
Structure Excavation	Cu. Yd.	320		
Pipe Underdrain for Structures, 6"	Lin. Ft.	130		
Geocomposite Wall Drain	Sq. Yd.	267		

**FIELD CUTTING DIAGRAM**

\*\*Order h5(E) & h6(E) full length. Cut as shown and use remainder of bars in opposite end.

**ELEVATION**  
(Looking East)

Maximum Soil Bearing Pressure = 4.0 ksf

**PLAN**

Note "A":  
Epoxy grout n(E) and w1(E) bars in 9" minimum drilled holes according to Section 584 of Standard Specifications.

\*\* Cut bars from Ramp A West Abutment. See Sheet S-9.

Notes:  
See Sheet S-14 for sections & details  
Reinforcement bars designated (E) shall be epoxy coated.  
Bars indicated thus 20 x 3-#5 etc. indicates 20 lines of bars with 3 lengths per line.  
Minimum lap splices 1'-8" for #4 bars, 2'-2" for #5 bars, 2'-7" for #6 and 3'-5" for #7 bars.

REVISIONS	
NAME	DATE

**Clorba Group, Inc.**  
CONSULTING ENGINEERS  
5907 NORTH CUMBERLAND AVENUE - CHICAGO, ILLINOIS 60630 - (773) 775-6000

ILLINOIS DEPARTMENT OF TRANSPORTATION  
RAMP A EAST ABUTMENT  
FAI-80 OVER WEST FRONTAGE ROAD  
FAI-80 SECTION 99-1 (K, BY & AC-BI)  
WILL COUNTY  
FAI-80 STA. 1931+99.35  
STRUCTURE NO. 099-0042, 099-0043, 099-0308  
SCALE: NONE DRAWN BY IMC  
DATE: OCTOBER 2004 CHECKED BY GDW

DATE: 10/20/05  
FILENAME: n:\proj\2890\2890-02\design\structural\2890-02-s-13-ramp-a-e-abut.dgn