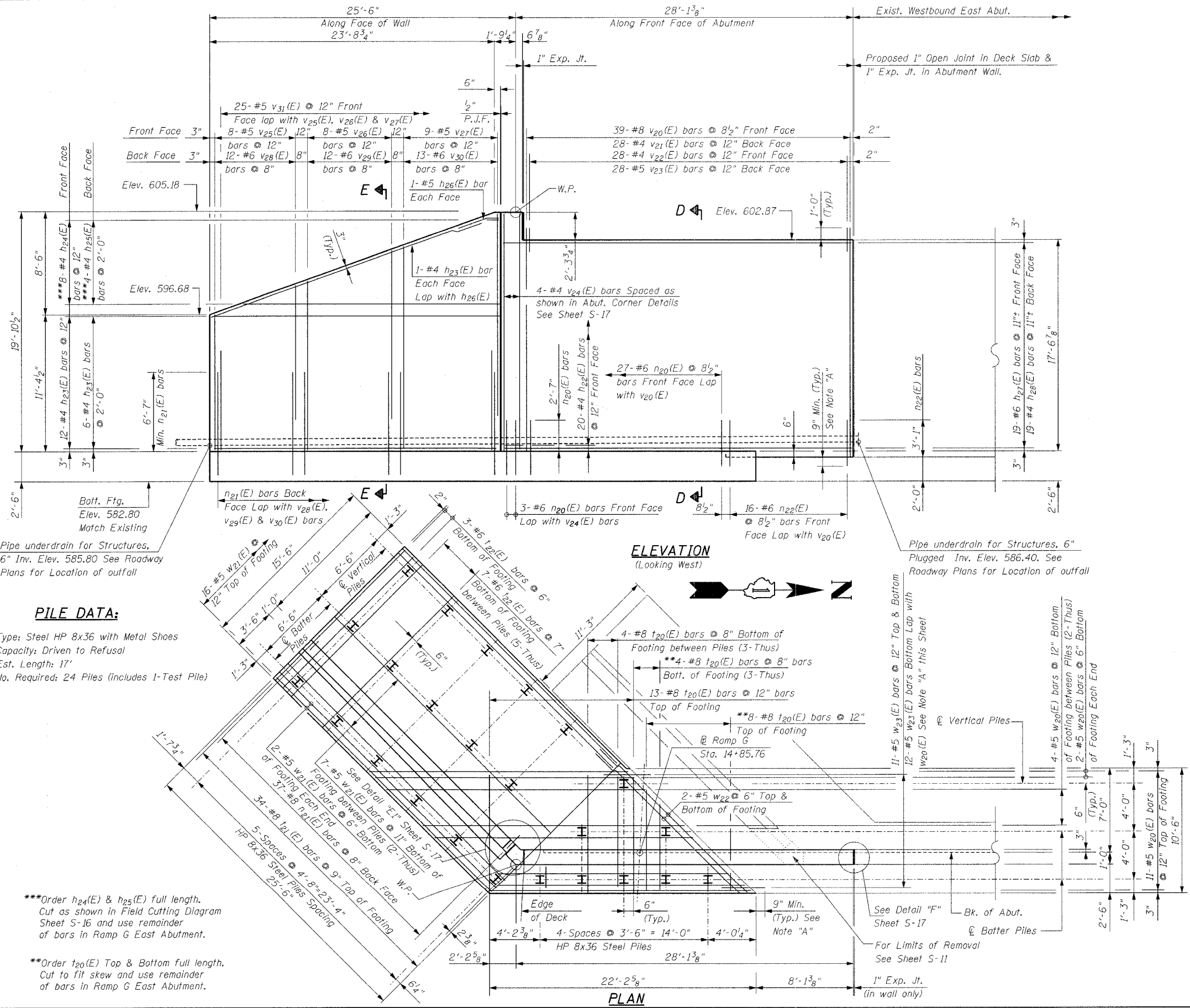


F.A.I. RTE.	SECTION	COUNTY	TOTAL SHEETS	SHEET NO.
80	99-10K, BY&AC-B)	COOK	497	314
STA.		TO STA.		
FED. ROAD DIST. NO.		ILLINOIS	FED. AID PROJECT	
Sheet S-15 of S-21		CONTRACT 80906		



Pipe underdrain for Structures, 6" Inv. Elev. 585.80 See Roadway Plans for Location of outfall

**PILE DATA:**  
 Type: Steel HP 8x36 with Metal Shoes  
 Capacity: Driven to Refusal  
 Est. Length: 17'  
 No. Required: 24 Piles (includes 1-Test Pile)

\*\*\*Order h24(E) & h25(E) full length. Cut as shown in Field Cutting Diagram Sheet S-16 and use remainder of bars in Ramp G East Abutment.  
 \*\*\*Order t20(E) Top & Bottom full length. Cut to fit skew and use remainder of bars in Ramp G East Abutment.

Note "A":  
 Epoxy grout n22(E) and w23(E) bars in 9" minimum drilled holes according to Section 584 of Standard Specifications.

Notes:  
 See Sheet S-17 for sections & details  
 Reinforcement bars designated (E) shall be epoxy coated.  
 Bars indicated thus 2 x 2-#5 etc. indicates 2 lines of bars with 2 lengths per line.  
 Minimum lap splices 1'-8" for #4 bars, 2'-2" for #5 bars, 2'-7" for #6 bars.

REVISIONS	
NAME	DATE

**Ciorba Group, Inc.**  
 CONSULTING ENGINEERS  
 2007 NORTH CUMBERLAND AVENUE - CHICAGO, ILLINOIS 60641 - (773) 778-4200

ILLINOIS DEPARTMENT OF TRANSPORTATION  
 RAMP G WEST ABUTMENT  
 FAI-80 OVER WEST FRONTAGE ROAD  
 FAI-80 SECTION 99-1 (K, BY & AC-B)  
 WILL COUNTY  
 FAI-80 STA. 1931+99.35  
 STRUCTURE NO. 099-0042, 099-0043, 099-0308  
 SCALE: NONE  
 DATE: OCTOBER 2004  
 DRAWN BY IMG  
 CHECKED BY GDW

DATE: 10/20/05 FILENAME: n:\proj\2890\2890-02\design\structural\2890-02-g-15-ramp-g-w-abut.dgn