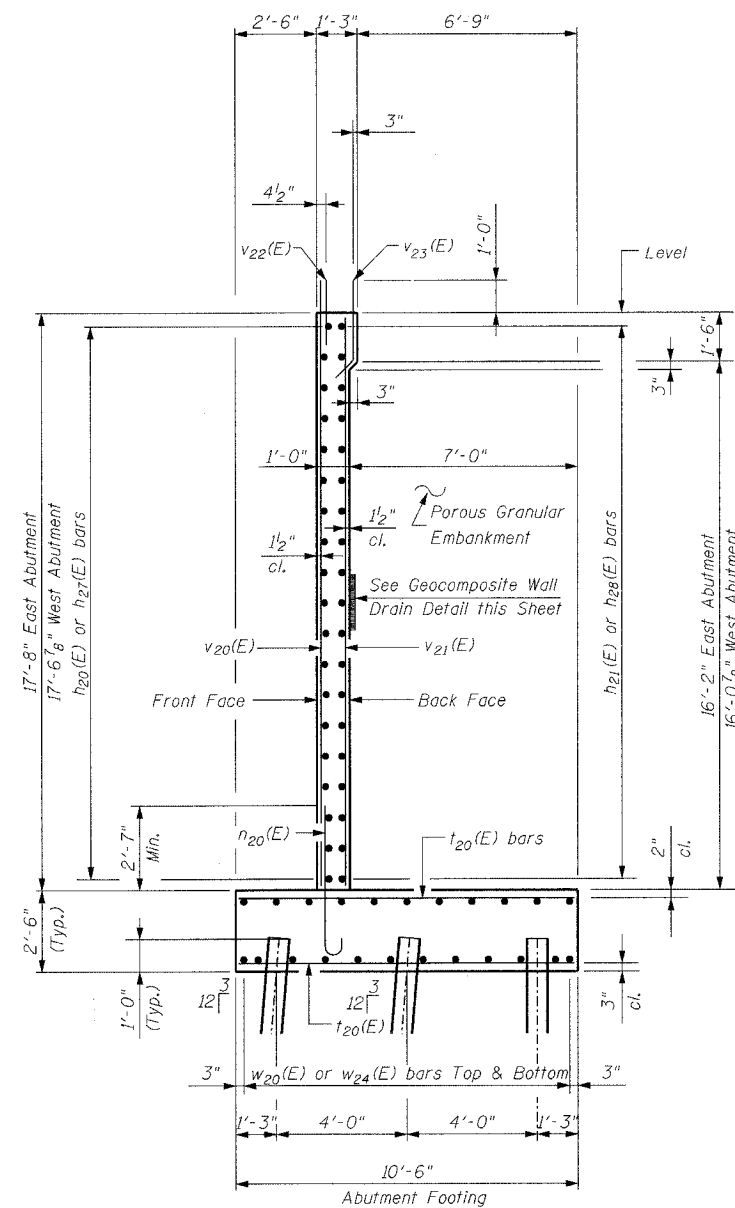
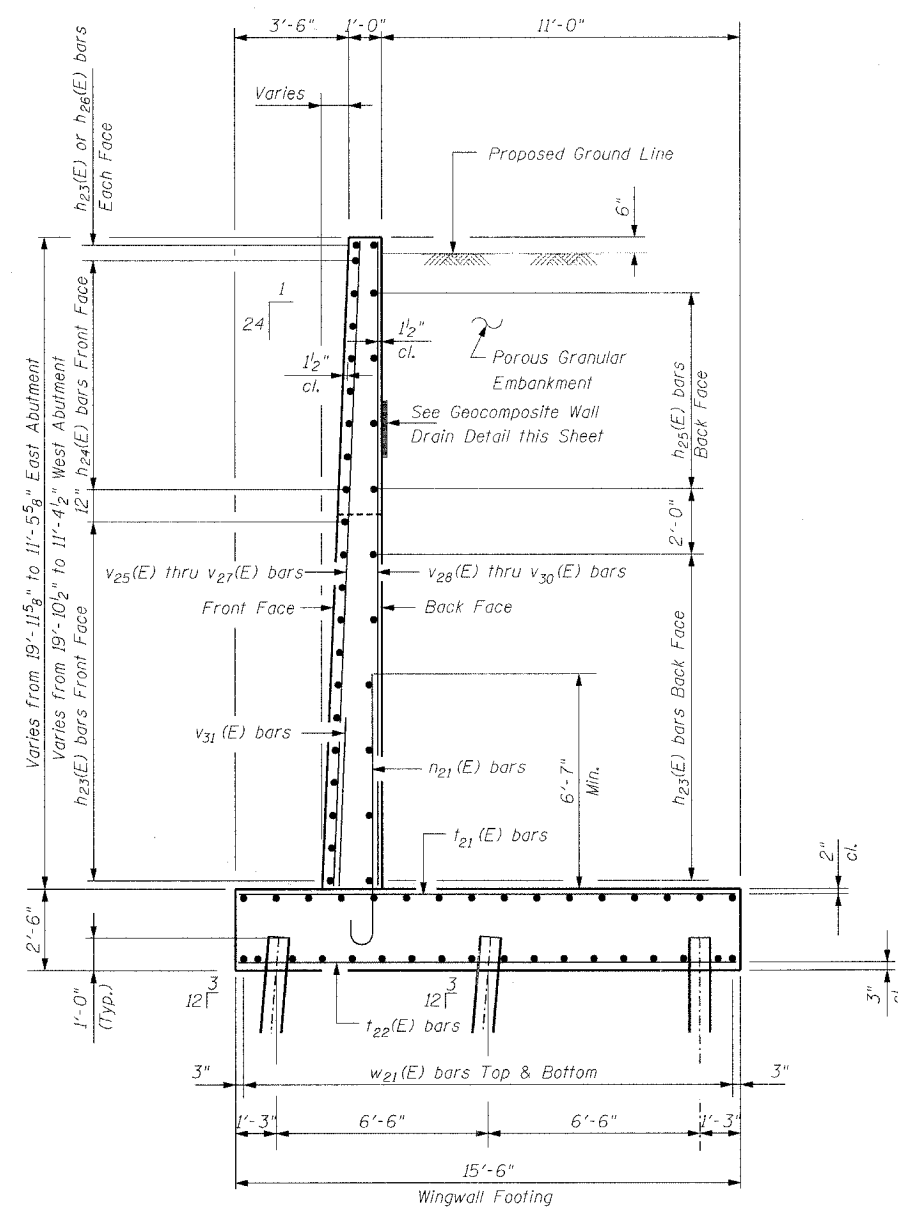


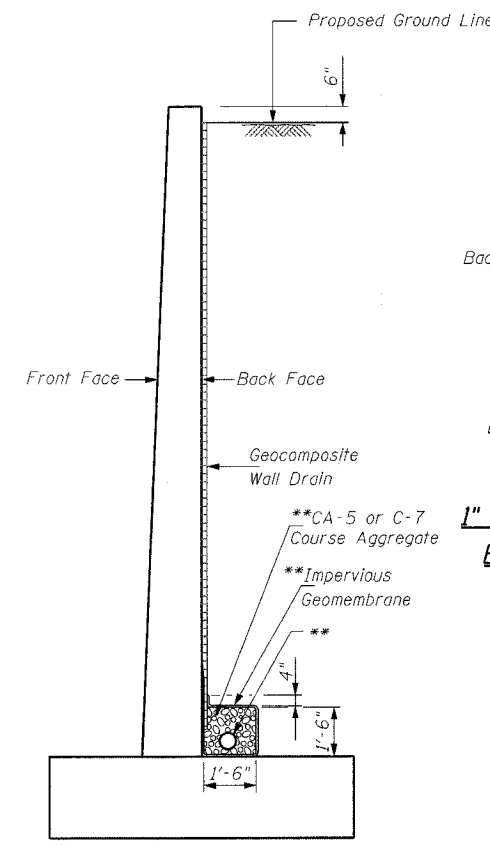
F.A.I. RTE.	SECTION	COUNTY	TOTAL SHEETS	SHEET NO.
80	99-1(K,BY&AC-B)	COOK	497	316
STA.		TO STA.		
FED. ROAD DIST. NO.		ILLINOIS FED. AID PROJECT		
Sheet S-17 of S-21			CONTRACT 80906	



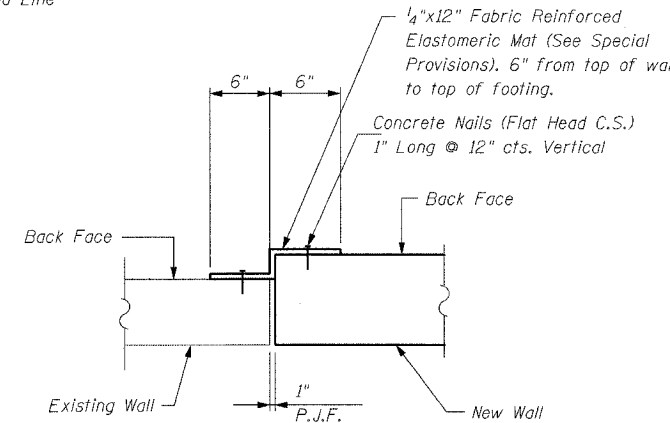
SECTION D-D



SECTION E-E



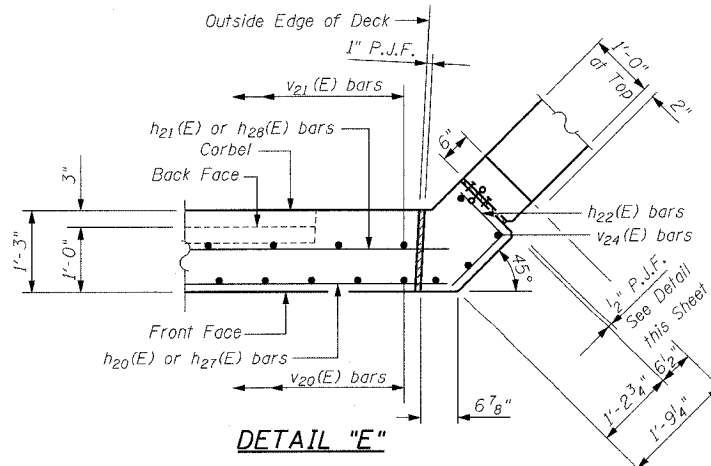
GEOCOMPOSITE DRAIN DETAIL



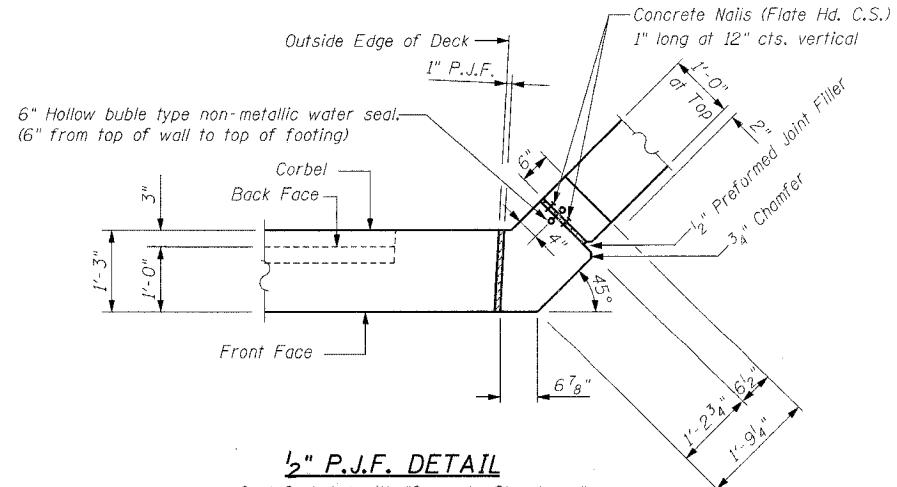
DETAIL "F"
1" EXPANSION JOINT DETAIL BETWEEN
EXISTING & NEW ABUTMENT WALL
(RAMPS A & G)

Cost of Fabric Reinforced Elastomeric Mat, Concrete Nails and Preformed Joint Filler included in "Concrete Structures"

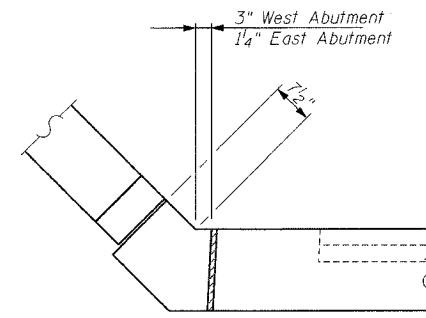
** 6" perforated drain pipe encased in 18" of CA-5 or CA-7 course aggregate. Cost of course aggregate, geotechnical fabric, impervious geomembrane included in the cost of "Pipe Underdrains for Structures 6" ". See Special Provisions



DETAIL "E"
ABUTMENT CORNER DETAIL
East Abutment Shown, West Abutment Similar
Except as Shown in West Abutment Corner Detail.



1/2" P.J.F. DETAIL
Cost Included with "Concrete Structures"
East Abutment Shown, West Abutment Similar
Except as Shown in West Abutment Corner Detail.



DETAIL "E1"
WEST ABUTMENT CORNER DETAIL
West Abutment Shown

REVISIONS	NAME	DATE

CG Ciorba Group, Inc.
CONSULTING ENGINEERS
307 NORTH CUMBERLAND AVENUE • CHICAGO, ILLINOIS 60606 • (773) 779-4000

ILLINOIS DEPARTMENT OF TRANSPORTATION
RAMP G ABUTMENTS SECTIONS & DETAILS
FAI-80 OVER WEST FRONTAGE ROAD
FAI-80 SECTION 99-1 (K, BY & AC-B)
WILL COUNTY
FAI-80 STA. 1931+99.35
STRUCTURE NO. 099-0042, 099-0043, 099-0308
SCALE: NONE
DATE: OCTOBER 2004

DRAWN BY IMG
CHECKED BY GDW