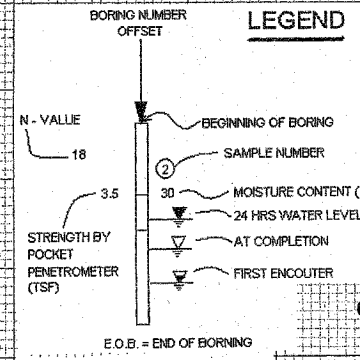


SOIL BORINGS BY IDOT

SECTION	COUNTY	TOTAL SHEETS	SHEET NO.
RD-55 99-1(K, BY&AC-B)	WILL	497	322
ROAD DIST. NO. 1 ILLINOIS		FED. AID PROJECT	
CONTRACT NO. 80906			

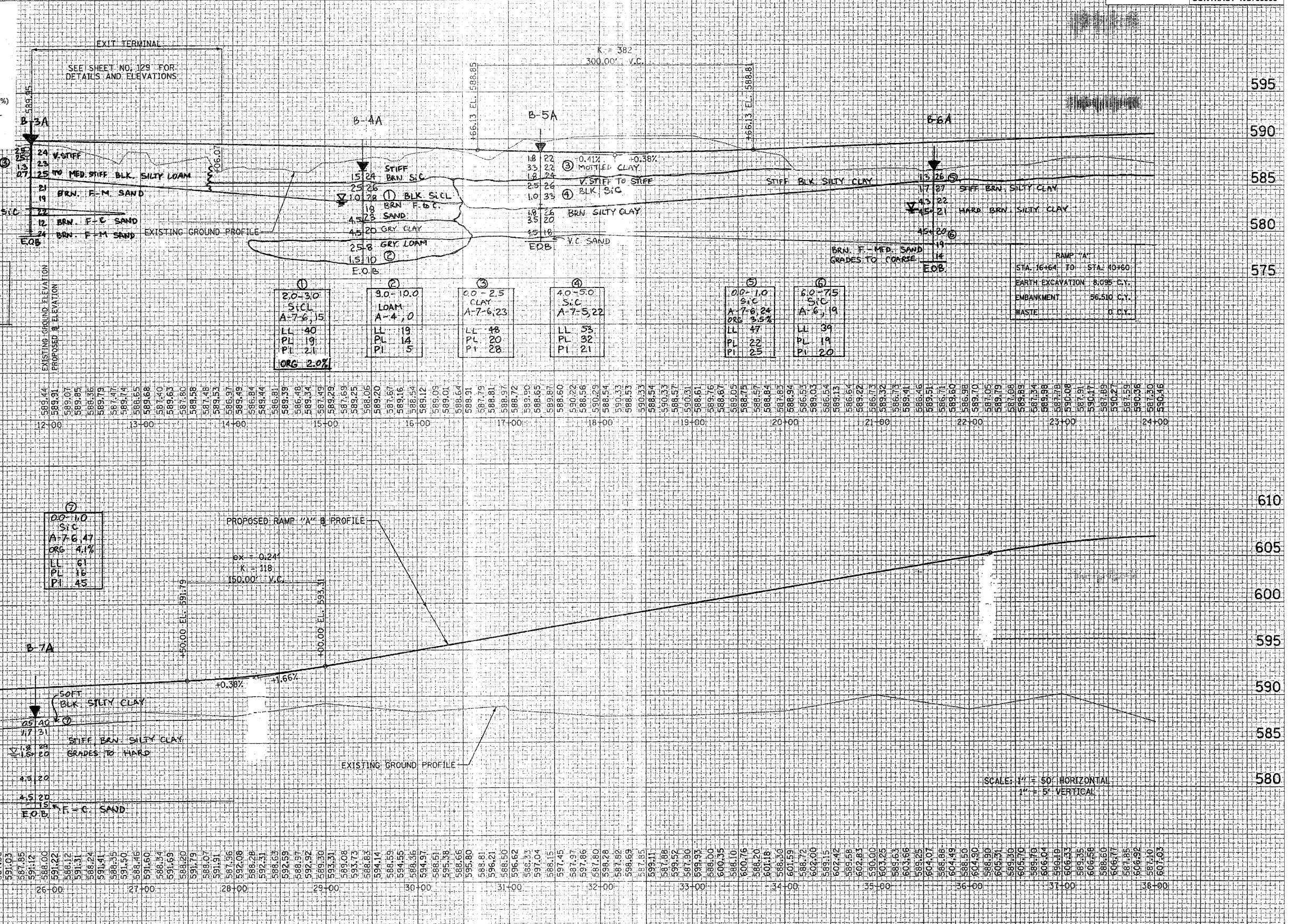
RAMP "A" PROFILE



ABBREVIATIONS

BLK	BLACK
BRN	BROWN
GRY	GRAY
ORG	ORGANIC CONTENT (%)
F.	FINE
MED.	MEDIUM
C.	COURSE
V.	VERY
TR.	TRACE
ELEV.	ELEVATION
P.G.	WELL GRADED
BIT.	BITUMINOUS
SIC	SILTY CLAY
SICL	SILTY CLAY LOAM
C	CLAY
SsC	SANDY CLAY
Ss	SAND
G	GRAVEL
SHD	SHOULDER
CR-S	CRUSHED STONE

EXISTING GROUND ELEVATION	PROPOSED GROUND ELEVATION	DEPTH (FT)	SOIL CLASSIFICATION	AASHTO SOIL GROUP	LL (%)	PL (%)	PI (%)
589.44	589.31	12-00	BRN. S.C.	A-6.9	35	19	16
589.07	589.07	13-00	BRN. F-M SAND	A-7.6, 15	40	19	21
589.05	589.05	14-00	BRN. F-C SAND	A-7.6, 15	40	19	21
588.36	588.36	15-00	BRN. F-M SAND	A-7.6, 15	40	19	21
588.79	588.79	16-00	BRN. F-M SAND	A-7.6, 15	40	19	21
587.47	587.47	17-00	BRN. F-M SAND	A-7.6, 15	40	19	21
589.74	589.74	18-00	BRN. F-M SAND	A-7.6, 15	40	19	21
588.65	588.65	19-00	BRN. F-M SAND	A-7.6, 15	40	19	21
587.40	587.40	20-00	BRN. F-M SAND	A-7.6, 15	40	19	21
589.68	589.68	21-00	BRN. F-M SAND	A-7.6, 15	40	19	21
587.40	587.40	22-00	BRN. F-M SAND	A-7.6, 15	40	19	21
589.63	589.63	23-00	BRN. F-M SAND	A-7.6, 15	40	19	21
587.80	587.80	24-00	BRN. F-M SAND	A-7.6, 15	40	19	21
589.58	589.58	25-00	BRN. F-M SAND	A-7.6, 15	40	19	21
587.48	587.48	26-00	BRN. F-M SAND	A-7.6, 15	40	19	21
589.53	589.53	27-00	BRN. F-M SAND	A-7.6, 15	40	19	21
586.97	586.97	28-00	BRN. F-M SAND	A-7.6, 15	40	19	21
589.49	589.49	29-00	BRN. F-M SAND	A-7.6, 15	40	19	21
586.84	586.84	30-00	BRN. F-M SAND	A-7.6, 15	40	19	21
589.44	589.44	31-00	BRN. F-M SAND	A-7.6, 15	40	19	21
586.81	586.81	32-00	BRN. F-M SAND	A-7.6, 15	40	19	21
589.39	589.39	33-00	BRN. F-M SAND	A-7.6, 15	40	19	21
586.48	586.48	34-00	BRN. F-M SAND	A-7.6, 15	40	19	21
589.34	589.34	35-00	BRN. F-M SAND	A-7.6, 15	40	19	21
587.49	587.49	36-00	BRN. F-M SAND	A-7.6, 15	40	19	21
589.29	589.29	37-00	BRN. F-M SAND	A-7.6, 15	40	19	21
587.69	587.69	38-00	BRN. F-M SAND	A-7.6, 15	40	19	21
589.25	589.25	39-00	BRN. F-M SAND	A-7.6, 15	40	19	21
588.06	588.06	40-00	BRN. F-M SAND	A-7.6, 15	40	19	21
589.20	589.20	41-00	BRN. F-M SAND	A-7.6, 15	40	19	21
587.67	587.67	42-00	BRN. F-M SAND	A-7.6, 15	40	19	21
589.16	589.16	43-00	BRN. F-M SAND	A-7.6, 15	40	19	21
588.54	588.54	44-00	BRN. F-M SAND	A-7.6, 15	40	19	21
589.12	589.12	45-00	BRN. F-M SAND	A-7.6, 15	40	19	21
589.09	589.09	46-00	BRN. F-M SAND	A-7.6, 15	40	19	21
589.01	589.01	47-00	BRN. F-M SAND	A-7.6, 15	40	19	21
588.64	588.64	48-00	BRN. F-M SAND	A-7.6, 15	40	19	21
588.91	588.91	49-00	BRN. F-M SAND	A-7.6, 15	40	19	21
587.79	587.79	50-00	BRN. F-M SAND	A-7.6, 15	40	19	21
588.81	588.81	51-00	BRN. F-M SAND	A-7.6, 15	40	19	21
588.97	588.97	52-00	BRN. F-M SAND	A-7.6, 15	40	19	21
588.72	588.72	53-00	BRN. F-M SAND	A-7.6, 15	40	19	21
589.90	589.90	54-00	BRN. F-M SAND	A-7.6, 15	40	19	21
588.65	588.65	55-00	BRN. F-M SAND	A-7.6, 15	40	19	21
589.87	589.87	56-00	BRN. F-M SAND	A-7.6, 15	40	19	21
588.60	588.60	57-00	BRN. F-M SAND	A-7.6, 15	40	19	21
590.22	590.22	58-00	BRN. F-M SAND	A-7.6, 15	40	19	21
588.56	588.56	59-00	BRN. F-M SAND	A-7.6, 15	40	19	21
590.29	590.29	60-00	BRN. F-M SAND	A-7.6, 15	40	19	21
588.54	588.54	61-00	BRN. F-M SAND	A-7.6, 15	40	19	21
590.33	590.33	62-00	BRN. F-M SAND	A-7.6, 15	40	19	21
588.53	588.53	63-00	BRN. F-M SAND	A-7.6, 15	40	19	21
590.33	590.33	64-00	BRN. F-M SAND	A-7.6, 15	40	19	21
588.54	588.54	65-00	BRN. F-M SAND	A-7.6, 15	40	19	21
590.33	590.33	66-00	BRN. F-M SAND	A-7.6, 15	40	19	21
588.54	588.54	67-00	BRN. F-M SAND	A-7.6, 15	40	19	21
590.33	590.33	68-00	BRN. F-M SAND	A-7.6, 15	40	19	21
588.54	588.54	69-00	BRN. F-M SAND	A-7.6, 15	40	19	21
590.33	590.33	70-00	BRN. F-M SAND	A-7.6, 15	40	19	21
588.54	588.54	71-00	BRN. F-M SAND	A-7.6, 15	40	19	21
590.33	590.33	72-00	BRN. F-M SAND	A-7.6, 15	40	19	21
588.54	588.54	73-00	BRN. F-M SAND	A-7.6, 15	40	19	21
590.33	590.33	74-00	BRN. F-M SAND	A-7.6, 15	40	19	21
588.54	588.54	75-00	BRN. F-M SAND	A-7.6, 15	40	19	21
590.33	590.33	76-00	BRN. F-M SAND	A-7.6, 15	40	19	21
588.54	588.54	77-00	BRN. F-M SAND	A-7.6, 15	40	19	21
590.33	590.33	78-00	BRN. F-M SAND	A-7.6, 15	40	19	21
588.54	588.54	79-00	BRN. F-M SAND	A-7.6, 15	40	19	21
590.33	590.33	80-00	BRN. F-M SAND	A-7.6, 15	40	19	21
588.54	588.54	81-00	BRN. F-M SAND	A-7.6, 15	40	19	21
590.33	590.33	82-00	BRN. F-M SAND	A-7.6, 15	40	19	21
588.54	588.54	83-00	BRN. F-M SAND	A-7.6, 15	40	19	21
590.33	590.33	84-00	BRN. F-M SAND	A-7.6, 15	40	19	21
588.54	588.54	85-00	BRN. F-M SAND	A-7.6, 15	40	19	21
590.33	590.33	86-00	BRN. F-M SAND	A-7.6, 15	40	19	21
588.54	588.54	87-00	BRN. F-M SAND	A-7.6, 15	40	19	21
590.33	590.33	88-00	BRN. F-M SAND	A-7.6, 15	40	19	21
588.54	588.54	89-00	BRN. F-M SAND	A-7.6, 15	40	19	21
590.33	590.33	90-00	BRN. F-M SAND	A-7.6, 15	40	19	21



SCALE: 1" = 50' HORIZONTAL
1" = 5' VERTICAL

DATE: 07/20/00
DRAWN: [unreadable]