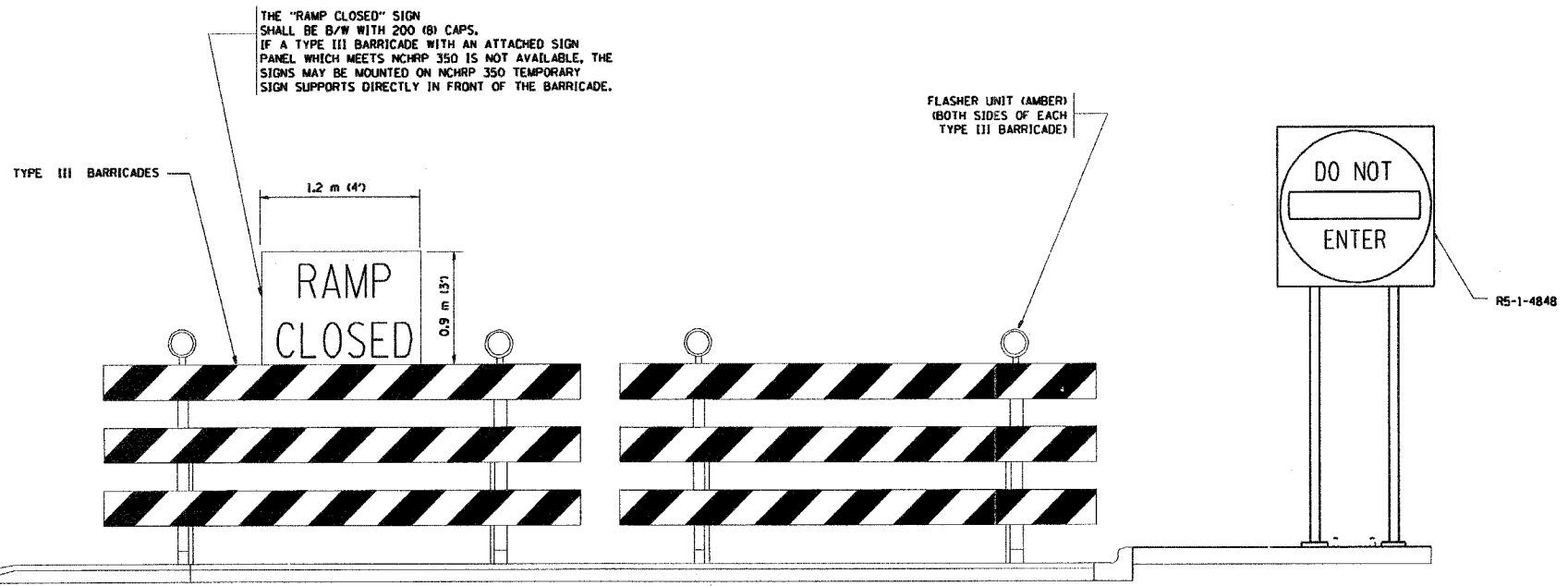
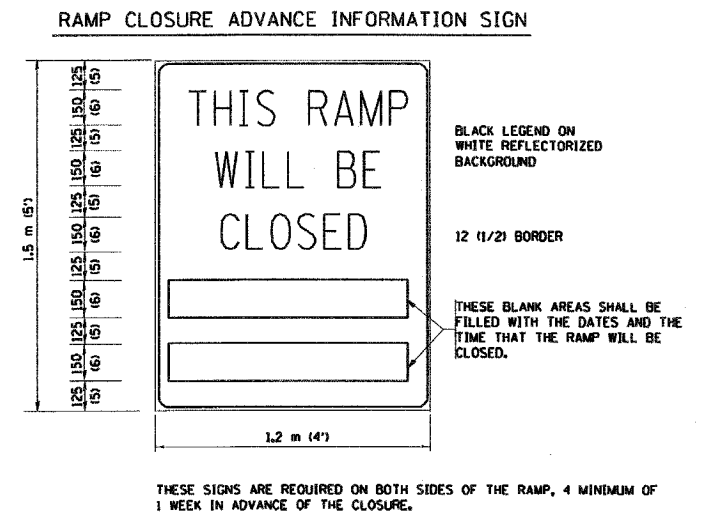
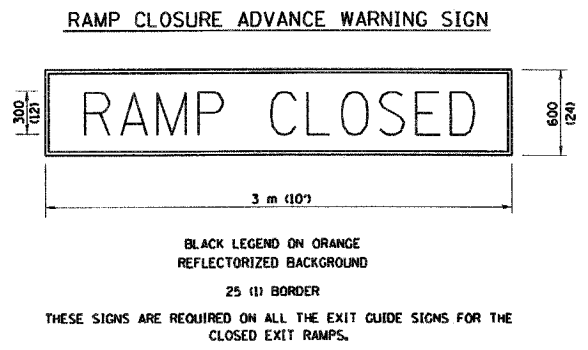
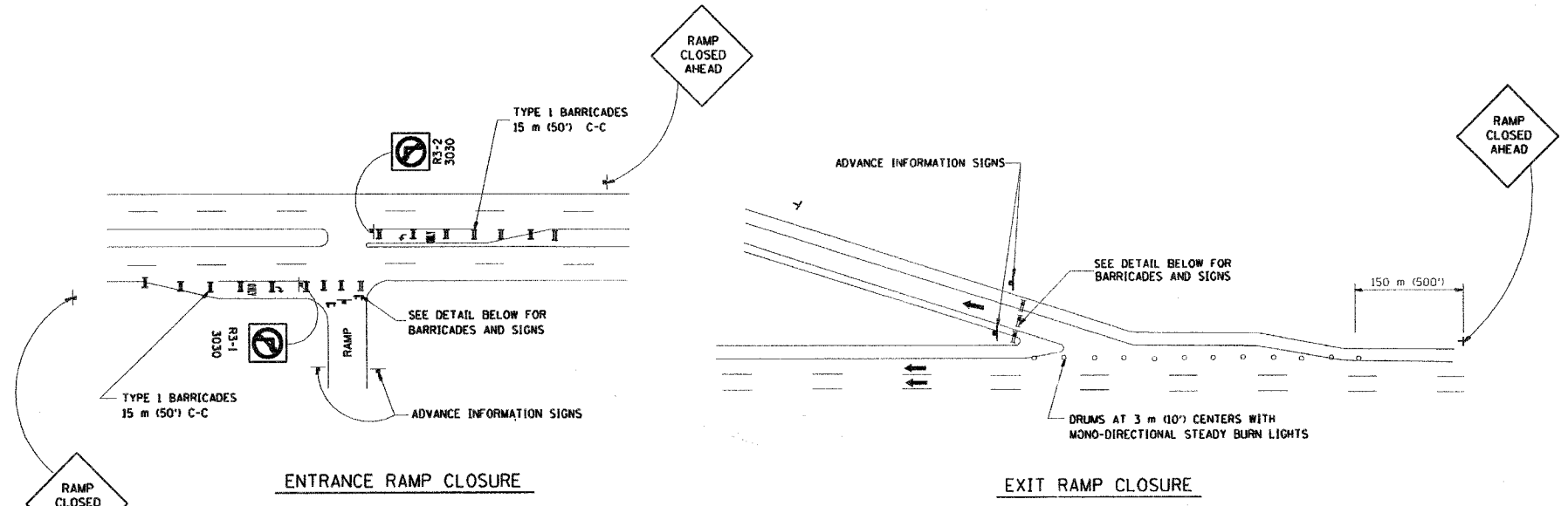


F.A.I. RTE.	SECTION	COUNTY	TOTAL SHEETS	SHEET NO.
80-55	99-1(K, BY&AC-B)	WILL	497	354
STA.	TO STA.			
FED. ROAD DIST. NO.	ILLINOIS	FED. AID PROJECT		

#80906



THE "RAMP CLOSED" SIGN SHALL BE B/W WITH 200 (8) CAPS. IF A TYPE III BARRICADE WITH AN ATTACHED SIGN PANEL WHICH MEETS NCHRP 350 IS NOT AVAILABLE, THE SIGNS MAY BE MOUNTED ON NCHRP 350 TEMPORARY SIGN SUPPORTS DIRECTLY IN FRONT OF THE BARRICADE.

- GENERAL NOTES:
1. CONES MAY BE SUBSTITUTED FOR DRUMS OR TYPE II BARRICADES DURING DAY OPERATIONS. CONES SHALL BE A MINIMUM OF 700 (28) HIGH.
 2. STEADY BURN LIGHTS WILL NOT BE REQUIRED FOR DAY OPERATIONS.
 3. A FLAGGER SHALL BE POSITIONED AT EACH CLOSED RAMP THAT IS OPEN TO CONSTRUCTION VEHICLES.
 4. FOR DAYTIME RAMP CLOSURES, LASTING 6 HOURS OR LESS, THE CONTRACTOR MAY ELIMINATE THE ADVANCE WARNING SIGNS ON THE EXIT GUIDE SIGNS.
 5. ALL ROUTE MARKERS AND TRAILBLAZER ASSEMBLIES WHICH DIRECT MOTORISTS TO A CLOSED ENTRANCE RAMP SHALL BE COVERED.
 6. THE SIGNING AND BARRICADING WHICH IS REQUIRED BY THIS DETAIL SHALL BE CONSIDERED INCIDENTAL TO TRAFFIC CONTROL AND PROTECTION.
 7. AUTHORIZATION FROM THE DISTRICT'S BUREAU OF TRAFFIC IS REQUIRED FOR ALL RAMP CLOSURES.

- NOTES:
1. CONES MAY BE SUBSTITUTED FOR TYPE I AND TYPE II BARRICADES DURING DAY OPERATIONS. CONES SHALL BE A MINIMUM OF 28" IN HEIGHT.
 2. STEADY BURN LIGHTS WILL NOT BE REQUIRED FOR DAY OPERATIONS.
 3. THE RAMP CLOSURE ADVANCE INFORMATION SIGNS SHALL BE ERECTED IF THE CLOSURE TIME EXCEEDS TWENTY-FOUR (24) HOURS.
 4. ADDITIONAL ADVANCE WARNING SIGNS ON EXIT GUIDE SIGNING WILL BE REQUIRED FOR EXIT RAMP CLOSURES THAT EXCEED TWENTY-FOUR (24) HOURS IN LENGTH.

REVISIONS	
NAME	DATE
DWS	2-83
DWS	1/90
DWS	9/94
DWS	12/94
DWS/JAF	12/02
Revise devices to meet NCHRP 350	4/03

ALL DIMENSIONS ARE IN MILLIMETERS (INCHES) UNLESS OTHERWISE SHOWN.

ILLINOIS DEPARTMENT OF TRANSPORTATION

FREWAY ENTRANCE AND EXIT RAMP CLOSURE DETAILS

SCALE: NONE

DATE: 05/06/2003

DRAWN BY: _____

CHECKED BY: _____

TC-8