

F.A.U. RTE.	SECTION	COUNTY	TOTAL SHEETS	SHEET NO.
94-P4031-00	DUPAGE		54	22

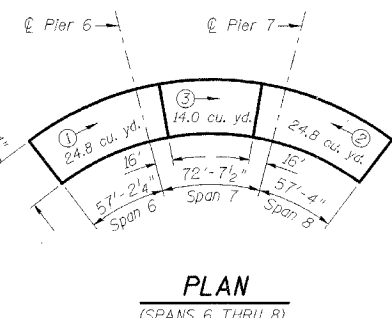
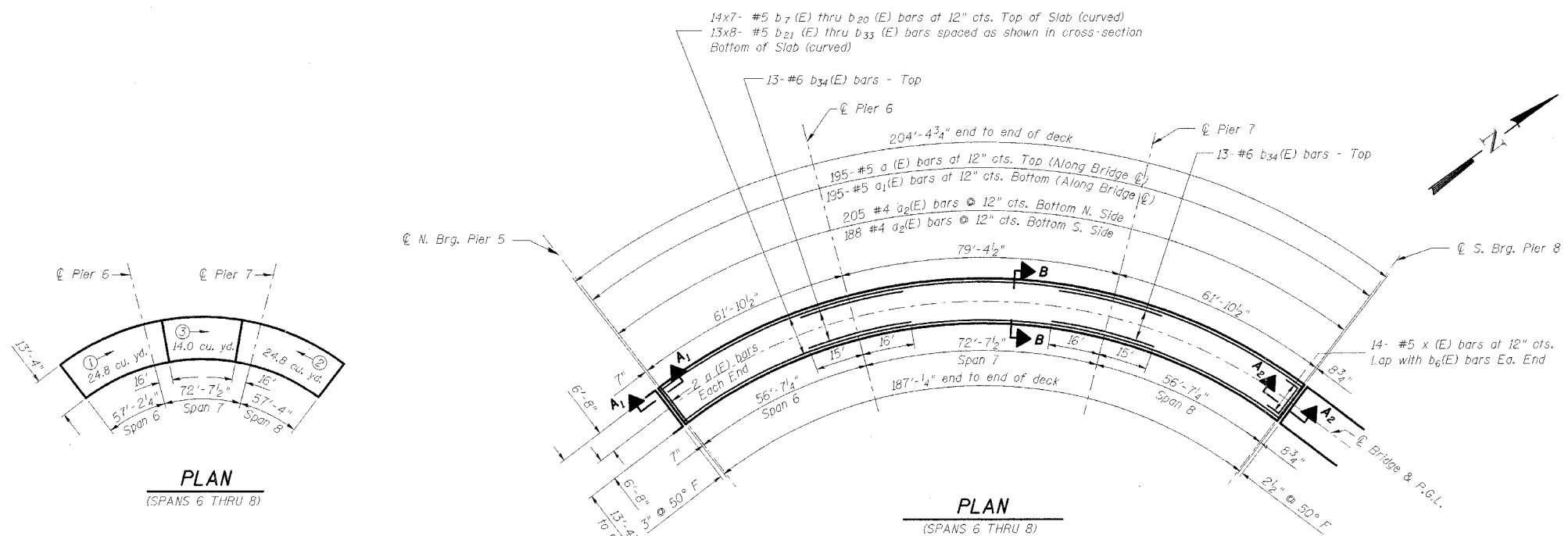
CONTRACT NO. 83560

**BILL OF MATERIAL**

Bar	No.	Size	Length (ft)	Shape
a (E)	756	#5	13'-0"	—
a <sub>1</sub> (E)	744	#5	12'-0"	—
a <sub>2</sub> (E)	1491	#4	1'-9"	—
b (E)	168	#5	31'-0"	—
b <sub>1</sub> (E)	169	#5	28'-8"	—
b <sub>2</sub> (E)	26	#6	40'-0"	—
b <sub>3</sub> (E)	13	#6	44'-0"	—
b <sub>4</sub> (E)	98	#5	30'-7"	—
b <sub>5</sub> (E)	104	#5	27'-0"	—
b <sub>6</sub> (E)	26	#6	34'-0"	—
b <sub>7</sub> (E)	98	#5	31'-0"	—
b <sub>8</sub> (E)	98	#5	30'-9"	—
b <sub>9</sub> (E)	98	#5	30'-7"	—
b <sub>10</sub> (E)	98	#5	30'-5"	—
b <sub>11</sub> (E)	98	#5	30'-3"	—
b <sub>12</sub> (E)	98	#5	30'-0"	—
b <sub>13</sub> (E)	98	#5	29'-10"	—
b <sub>14</sub> (E)	98	#5	29'-8"	—
b <sub>15</sub> (E)	98	#5	29'-6"	—
b <sub>16</sub> (E)	98	#5	29'-3"	—
b <sub>17</sub> (E)	98	#5	29'-1"	—
b <sub>18</sub> (E)	98	#5	29'-0"	—
b <sub>19</sub> (E)	98	#5	28'-9"	—
b <sub>20</sub> (E)	98	#5	28'-6"	—
b <sub>21</sub> (E)	104	#5	27'-4"	—
b <sub>22</sub> (E)	104	#5	27'-3"	—
b <sub>23</sub> (E)	104	#5	27'-1"	—
b <sub>24</sub> (E)	104	#5	26'-10"	—
b <sub>25</sub> (E)	104	#5	26'-8"	—
b <sub>26</sub> (E)	104	#5	26'-6"	—
b <sub>27</sub> (E)	104	#5	26'-4"	—
b <sub>28</sub> (E)	104	#5	26'-2"	—
b <sub>29</sub> (E)	104	#5	26'-0"	—
b <sub>30</sub> (E)	104	#5	25'-9"	—
b <sub>31</sub> (E)	104	#5	25'-6"	—
b <sub>32</sub> (E)	104	#5	25'-4"	—
b <sub>33</sub> (E)	104	#5	25'-3"	—
b <sub>34</sub> (E)	26	#6	31'-0"	—
x (E)	84	#5	4'-1"	—
Concrete Superstructure			Cu. Yd.	258.8
Reinforcement Bars, Epoxy Coated			Pound	122,850

**Notes**

1. Reinforcement bars designated (E) shall be epoxy coated.
2. Bars indicated thus 14x7 - #5 etc. indicates 14 lines of bars with 7 lengths per line.
3. For sections A-A, A<sub>1</sub>-A<sub>1</sub> & A<sub>2</sub>-A<sub>2</sub> see sheet S10

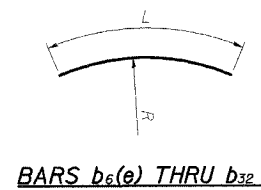
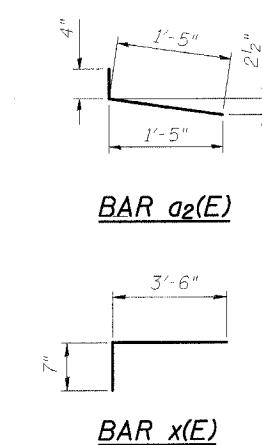


**DECK POURING SEQUENCE**  
(SPANS 6 THRU 8)

The rate of placing concrete shall equal or exceed 1/2 span length per hour, but not exceed 50 cu. yd. per hour.

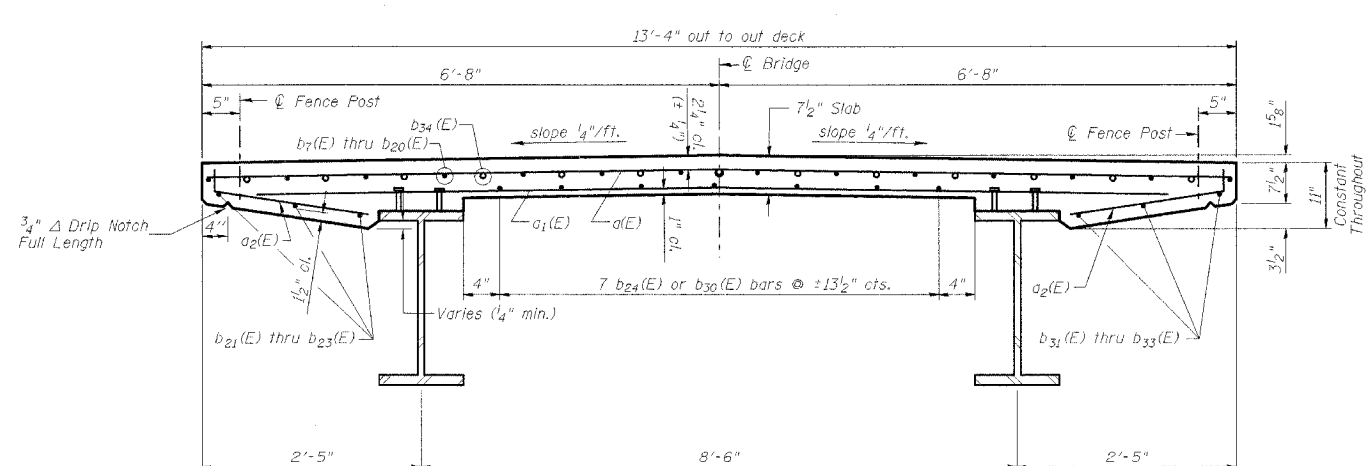
The contractor may submit an alternate pouring sequence subject to approval of the Engineer.

① → Indicates sequence number and pouring direction



**CURVED BAR DIMENSIONS**

Bar	R (ft)	L (ft)
b <sub>7</sub> (E)	156.50	31'-0"
b <sub>8</sub> (E)	155.50	30'-9"
b <sub>9</sub> (E)	154.50	30'-7"
b <sub>10</sub> (E)	153.50	30'-5"
b <sub>11</sub> (E)	152.50	30'-3"
b <sub>12</sub> (E)	151.50	30'-0"
b <sub>13</sub> (E)	150.50	29'-10"
b <sub>14</sub> (E)	149.50	29'-8"
b <sub>15</sub> (E)	148.50	29'-6"
b <sub>16</sub> (E)	147.50	29'-3"
b <sub>17</sub> (E)	146.50	29'-1"
b <sub>18</sub> (E)	145.50	29'-0"
b <sub>19</sub> (E)	144.50	28'-9"
b <sub>20</sub> (E)	143.50	28'-6"
b <sub>21</sub> (E)	156.50	27'-4"
b <sub>22</sub> (E)	155.75	27'-3"
b <sub>23</sub> (E)	155.00	27'-1"
b <sub>24</sub> (E)	153.42	26'-10"
b <sub>25</sub> (E)	152.28	26'-8"
b <sub>26</sub> (E)	151.14	26'-6"
b <sub>27</sub> (E)	150.00	26'-4"
b <sub>28</sub> (E)	148.86	26'-2"
b <sub>29</sub> (E)	147.73	26'-0"
b <sub>30</sub> (E)	146.58	25'-9"
b <sub>31</sub> (E)	145.00	25'-6"
b <sub>32</sub> (E)	144.25	25'-4"
b <sub>33</sub> (E)	143.50	25'-3"



**CROSS SECTION B-B**

PREPARED FOR:  
WHEATON PARK DISTRICT  
666 S. MAIN STREET  
WHEATON, ILLINOIS 60187

PREPARED BY:  
**CEMCON, Ltd.**  
Consulting Engineers, Land Surveyors & Planners  
2280 White Oak Circle, Suite 100  
Aurora, Illinois 60504-9675  
Ph: 630.862.2100 Fax: 630.862.2199  
E-Mail: cad@cemcon.com Website: www.cemcon.com

REVISIONS					
NO.	DATE	DESCRIPTION	NO.	DATE	DESCRIPTION

INDEX OF BRIDGE SHEETS  
SHEET S9 OF S29  
Copyright © 2003 Cemcon, Ltd. All rights reserved.

**DECK PLAN - SHEET 2 OF 2**  
**PEDESTRIAN/BICYCLE PATH BRIDGE OVER UNION PACIFIC RAILROAD**

FILE NAME: DECK PLAN	DSGN. BY: MMH	JOB NO.: 551007	FLD. BK./PG.: ----	SHEET NO.
DISC. NUMBER: 551007	DRN. BY: KMS	DATE: 04-26-04	SCALE: 1" = 20'	22 of 54