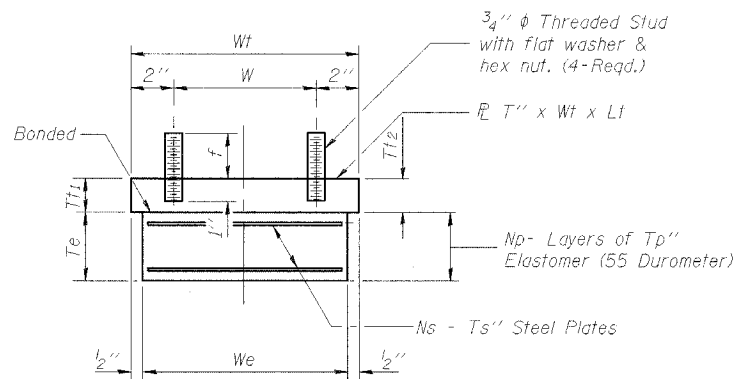


TYPE I ELASTOMERIC EXP. BRG.



Note: Shim plates shall not be placed under Bearing Assembly.

NOTES:

- All dimensions in tables are in inch units unless otherwise noted.
- For details of Type III and Fixed Bearings see sheet S17.

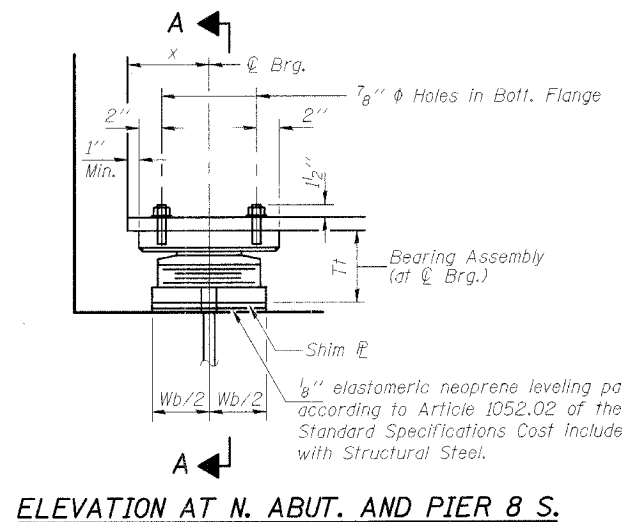
BILL OF MATERIAL

| Item | Unit | Total |
|---------------------------------------|------|-------|
| Elastomeric Bearing Assembly Type I | Each | 12 |
| Elastomeric Bearing Assembly Type II | Each | 4 |
| Elastomeric Bearing Assembly Type III | Each | 4 |

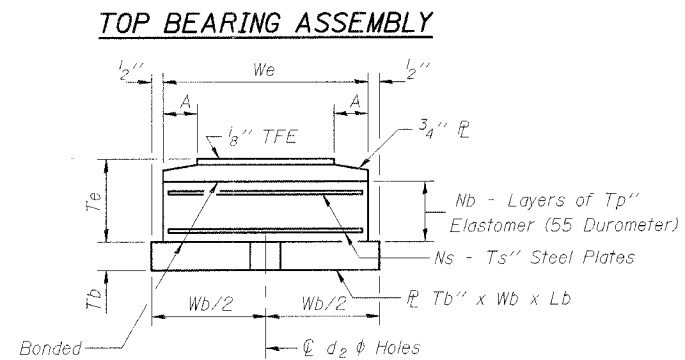
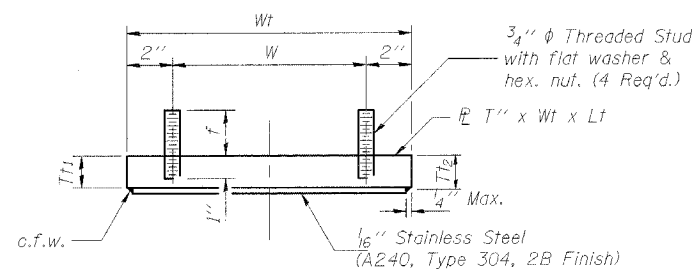
ELASTOMERIC EXPANSION BEARING ASSEMBLIES TYPE I & TYPE II
TABLE OF DIMENSIONS

| Location | Type | No. | We | Le | Tp | Np | Ts | Ns | Te | Wt | W | Lt | T | T#1 | T#2 | T#3 | f |
|-----------------|------|-----|----|----|------|----|------|----|--------|-------|-------|----|--------|--------|-----|--------|---------|
| Pier 1 & Pier 3 | I | 4 | 12 | 18 | 9/16 | 6 | 3/16 | 5 | 4 5/16 | 13 | 9 | 20 | 3 | 3 | 3 | 7 5/16 | 2 11/16 |
| Pier 5N | I | 2 | 7 | 12 | 3/8 | 5 | 3/32 | 4 | 2 1/4 | 8 | 4 | 16 | Varies | 2 1/4 | 2 | 4 3/8 | 3 1/4 |
| Pier 7 | I | 2 | 12 | 18 | 9/16 | 7 | 3/16 | 6 | 5 1/16 | 13 | 9 | 20 | 3 | 3 | 3 | 8 1/16 | 3 1/4 |
| Pier 8N* | I | 2 | 6 | 10 | 5/16 | 6 | 1/4 | 5 | 2 1/4 | 7 | 3 | 12 | 2 | 2 | 2 | 4 1/4 | 2 9/16 |
| Pier 10 | I | 2 | 11 | 16 | 1/2 | 7 | 1/8 | 6 | 4 1/4 | 12 | 8 | 18 | 3 | 3 | 3 | 7 1/4 | 2 9/16 |
| Pier 8S | II | 2 | 7 | 12 | 3/8 | 5 | 3/32 | 4 | 3 1/8 | 8 5/8 | 4 5/8 | 16 | Varies | 2 5/16 | 2 | 5 5/16 | 3 |
| N. Abut. | II | 2 | 7 | 10 | 5/16 | 6 | 1/4 | 5 | 3 1/8 | 7 3/4 | 3 3/4 | 12 | Varies | 2 1/4 | 2 | 5 1/4 | 2 5/16 |

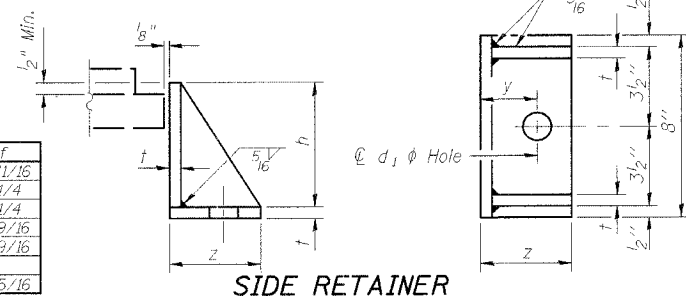
| Location | a | b | d | L | x | x1 | t | y | z | d1 | h | A | Tb | Wb | Lb | Lc | d2 |
|-----------------|-------|-------|-------|----|-------|----|-----|-------|-------|-------|-------|---|-------|----|--------|--------|-------|
| Pier 1 & Pier 3 | 3 | 3 | 1 1/2 | 18 | - | 4 | 5/8 | 2 3/4 | 5 1/2 | 1 3/4 | 7 1/4 | - | - | - | 25 3/4 | - | - |
| Pier 5N | 2 1/4 | 2 1/4 | 1 | 12 | 5 1/2 | 4 | 1/2 | 2 1/8 | 4 | 1 1/4 | 4 1/2 | - | - | - | 20 1/2 | - | - |
| Pier 7 | 3 | 3 | 1 1/2 | 18 | - | 4 | 5/8 | 2 3/4 | 5 1/2 | 1 3/4 | 8 | - | - | - | 25 3/4 | - | - |
| Pier 8N* | 2 1/4 | 2 1/4 | 1 | 12 | 5 1/2 | 4 | 1/2 | 2 1/8 | 4 | 1 1/4 | 4 1/4 | - | - | - | 16 1/2 | - | - |
| Pier 10 | 2 3/4 | 2 3/4 | 1 1/4 | 15 | - | 4 | 1/2 | 2 3/8 | 4 3/4 | 1 1/2 | 7 1/4 | - | - | - | 23 | - | - |
| Pier 8S | 2 1/4 | 2 1/4 | 1 | 12 | 7 | 4 | 1/2 | 2 1/8 | 4 | 1 1/4 | 5 1/2 | 1 | 2 | 8 | 24 1/2 | 20 1/2 | 1 1/2 |
| N. Abut. | 2 1/4 | 2 1/4 | 1 | 12 | 5 1/2 | 4 | 1/2 | 2 1/8 | 4 | 1 1/4 | 5 1/2 | 1 | 1 1/2 | 7 | 20 1/2 | 16 1/2 | 1 1/2 |



TYPE II ELASTOMERIC EXP. BRG.

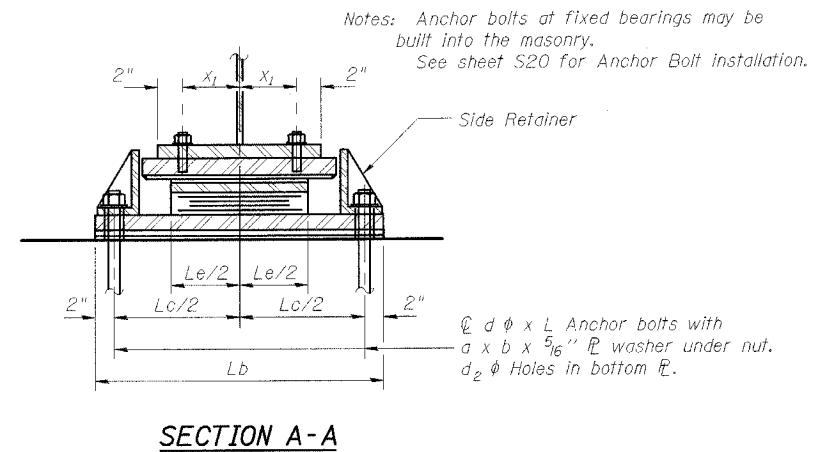


BEARING ASSEMBLY

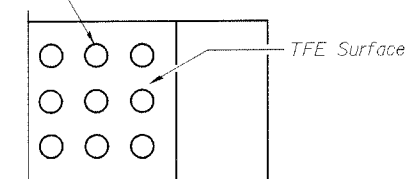


Equivalent rolled angle with stiffeners will be allowed in lieu of welded plates. Weight included with Structural Steel.

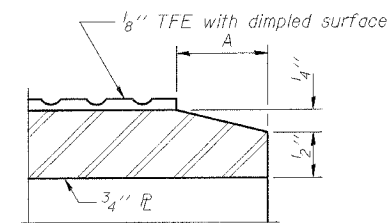
* 7/8" Thick shim plate required.



PLAN-TFE SURFACE

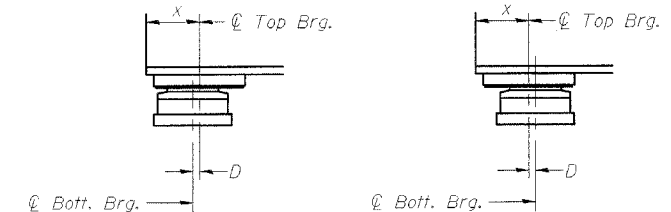


SECTION THRU TFE



Note: The 1/8" TFE sheet shall be bonded directly to the top steel plate with a two-component, medium viscosity epoxy resin, conforming to the requirements of the Federal Specification MMM-A-134, Type I. The bond agent shall be applied on the full area of the contact surfaces.

Bonding of 1/8" TFE sheet during vulcanizing process will be permitted provided the process and method of adjusting assembly height is approved by the Engineer.



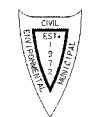
BELOW 50°F. ABOVE 50°F.
(Move bott. brg. away from fixed brg.) (Move bott. brg. toward fixed brg.)

SETTING ANCHOR BOLTS AT EXP. BRG.

D = 1/8" per each 100' of expansion for every 15° temp. change from the normal temp. of 50°F.

INDEX OF BRIDGE SHEETS SHEET S16 OF S29

PREPARED FOR:
WHEATON PARK DISTRICT
666 S. MAIN STREET
WHEATON, ILLINOIS 60187



PREPARED BY:
CEMCON, Ltd.
Consulting Engineers, Land Surveyors & Planners
2280 White Oak Circle, Suite 100
Aurora, Illinois 60504-9675
Ph: 630.862.2100 Fax: 630.862.2199
E-Mail: cadd@cemcon.com Website: www.cemcon.com

| NO. | | DATE | DESCRIPTION |
|-----|--|------|-------------|
| | | | |
| | | | |
| | | | |

| REVISIONS | | | |
|-----------|------|-------------|--|
| NO. | DATE | DESCRIPTION | |
| | | | |
| | | | |
| | | | |

BEARING DETAILS TYPE I & TYPE II
PEDESTRIAN/BICYCLE PATH BRIDGE OVER UNION PACIFIC RAILROAD

| | | | | |
|----------------------|---------------|------------------|--------------------|--------------------|
| FILE NAME: BEARINGS | DSGN. BY: MMH | JOB NO.: 551.007 | FLD. BK./PG.: ---- | SHEET NO. 29 of 54 |
| DISC. NUMBER: 551007 | DRN. BY: RDS | DATE: 04-26-04 | SCALE: ---- | |