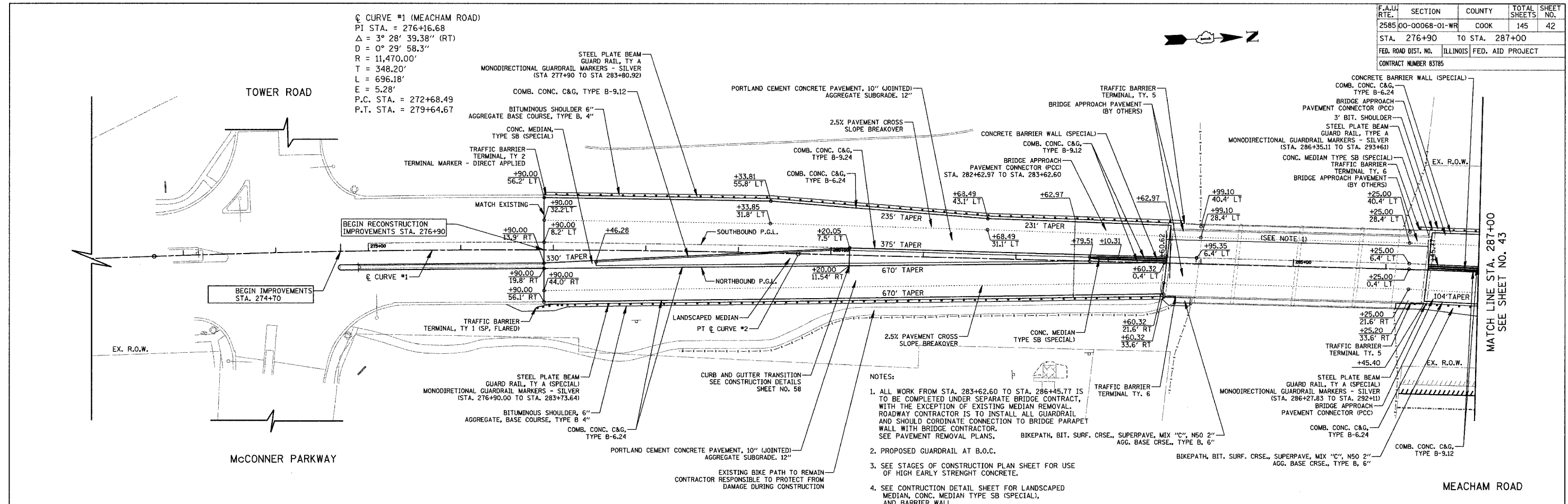
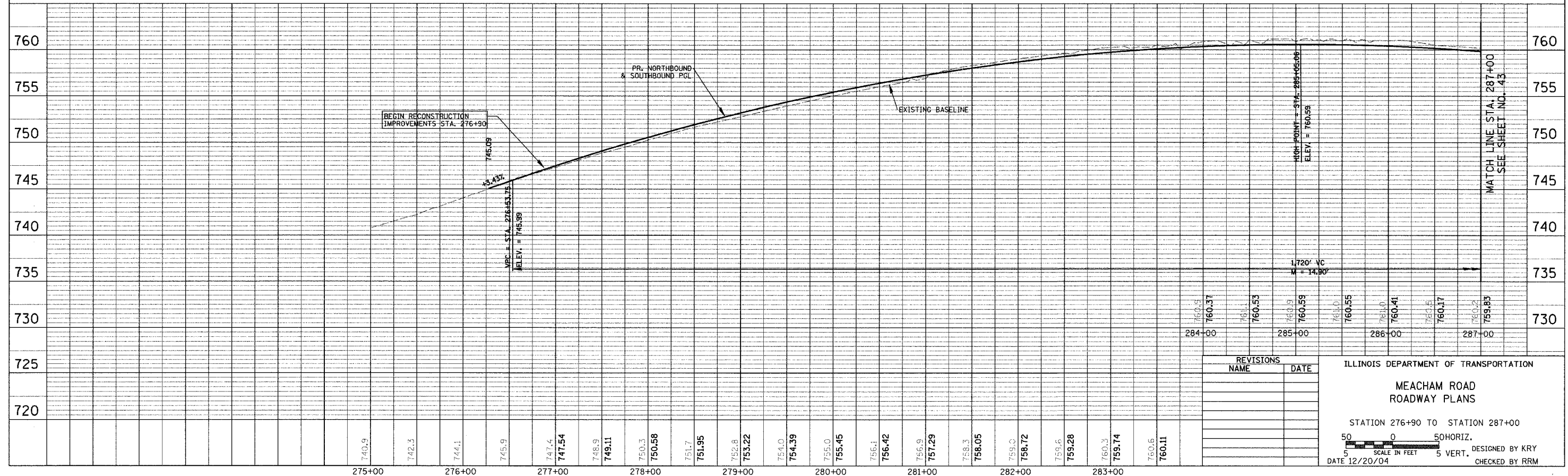


F.A.U. RTE.	SECTION	COUNTY	TOTAL SHEETS	SHEET NO.
2585 00-00068-01-WR	COOK	145	42	
STA. 276+90 TO STA. 287+00				
FED. ROAD DIST. NO.		ILLINOIS FED. AID PROJECT		
CONTRACT NUMBER 83785				

@ CURVE #1 (MEACHAM ROAD)
 PI STA. = 276+16.68
 $\Delta = 3^\circ 28' 39.38''$ (RT)
 $D = 0^\circ 29' 58.3''$
 $R = 11,470.00'$
 $T = 348.20'$
 $L = 696.18'$
 $E = 5.28'$
 P.C. STA. = 272+68.49
 P.T. STA. = 279+64.67



- NOTES:
- ALL WORK FROM STA. 283+62.60 TO STA. 286+45.77 IS TO BE COMPLETED UNDER SEPARATE BRIDGE CONTRACT, WITH THE EXCEPTION OF EXISTING MEDIAN REMOVAL. ROADWAY CONTRACTOR IS TO INSTALL ALL GUARDRAIL AND SHOULD COORDINATE CONNECTION TO BRIDGE PARAPET WALL WITH BRIDGE CONTRACTOR.
 - PROPOSED GUARDRAIL AT B.O.C.
 - SEE STAGES OF CONSTRUCTION PLAN SHEET FOR USE OF HIGH EARLY STRENGTH CONCRETE.
 - SEE CONSTRUCTION DETAIL SHEET FOR LANDSCAPED MEDIAN, CONC. MEDIAN TYPE SB (SPECIAL), AND BARRIER WALL.



REVISIONS	
NAME	DATE

ILLINOIS DEPARTMENT OF TRANSPORTATION
MEACHAM ROAD
 ROADWAY PLANS
 STATION 276+90 TO STATION 287+00
 50 0 50 HORIZ.
 5 SCALE IN FEET 5 VERT.
 DATE 12/20/04 DESIGNED BY KRY
 CHECKED BY RRM