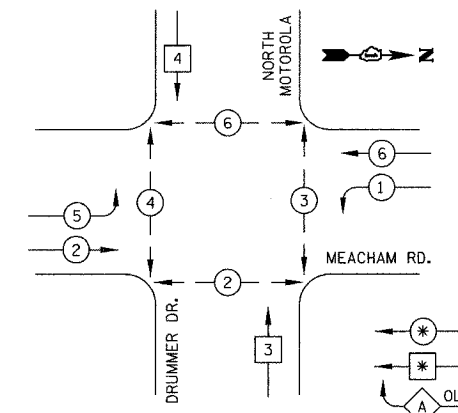
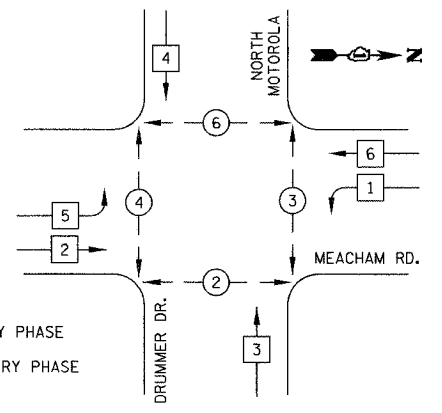


F.A.U. RTE.	SECTION	COUNTY	TOTAL SHEETS	SHEET NO.
2585	00-00068-01-WR	COOK	145	86
STA. XXX+XX		TO STA. XXX+XX		
FED. ROAD DIST. NO.		ILLINOIS FED. AID PROJECT		
CONTRACT NUMBER 83785				

TEMPORARY CONTROLLER SEQUENCE
EXISTING PHASING, M.O.T. STAGE I THRU STAGE III-B



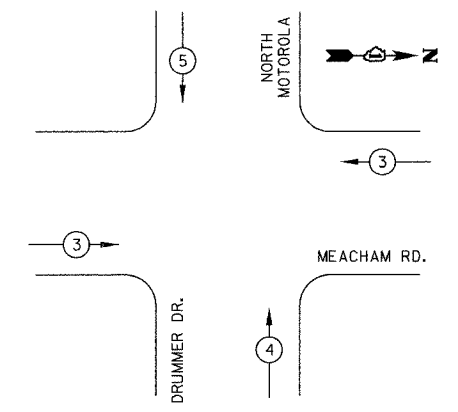
TEMPORARY CONTROLLER SEQUENCE
M.O.T. STAGE IV THRU FINAL STAGE



- LEGEND**
- DUAL ENTRY PHASE
 - SINGLE ENTRY PHASE
 - OVERLAP
 - PEDESTRIAN PHASE
 - NUMBER REFERS TO ASSOCIATED PHASE

TEMPORARY PHASE DESIGNATION DIAGRAM

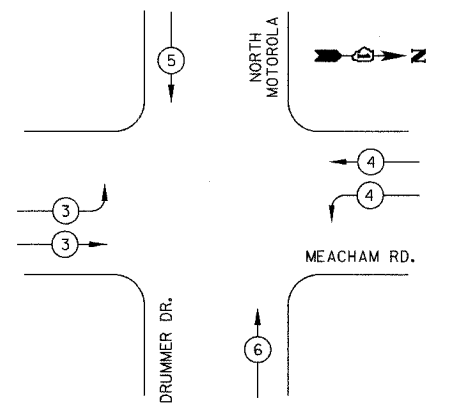
PROPOSED EMERGENCY VEHICLE PREEMPTION SEQUENCE
EXISTING PHASING, M.O.T. STAGE I THRU STAGE III-B



PROPOSED EMERGENCY VEHICLE PREEMPTORS				
EMERGENCY VEHICLE PREEMPTOR	3	4	5	
MOVEMENT	←	↑	↓	

TEMPORARY PHASE DESIGNATION DIAGRAM

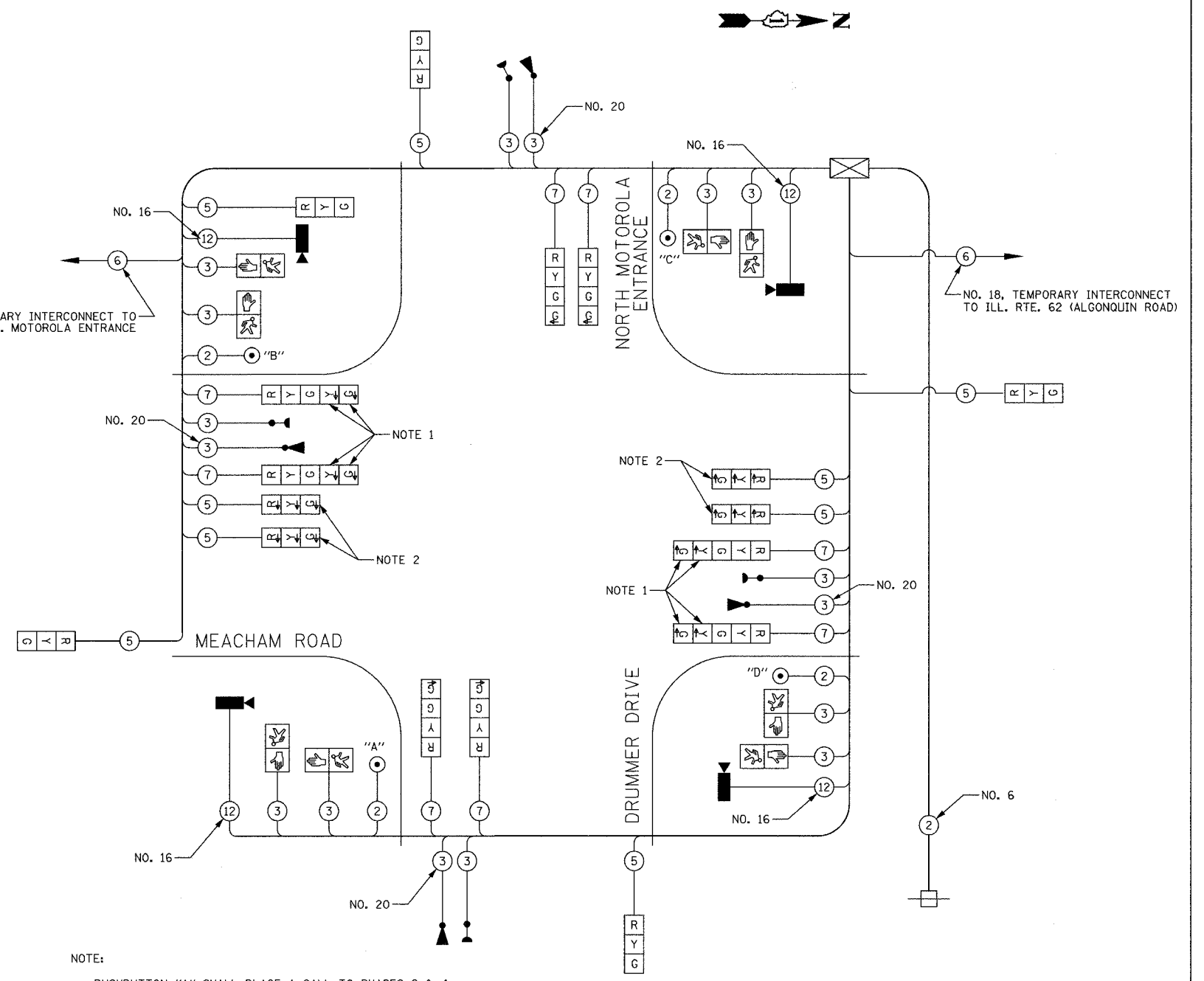
PROPOSED EMERGENCY VEHICLE PREEMPTION SEQUENCE
M.O.T. STAGE IV THRU FINAL STAGE



PROPOSED EMERGENCY VEHICLE PREEMPTORS					
EMERGENCY VEHICLE PREEMPTOR	3	4	5	6	
MOVEMENT	←	↑	↓	↑	

TEMPORARY CABLE PLAN LEGEND

- TEMPORARY TRAFFIC SIGNAL SECTION OR PEDESTRIAN SIGNAL SECTION 12" (300mm)
- CONTROLLER CABINET
- SERVICE INSTALLATION
- INDICATES NUMBER OF CONDUCTORS IN CABLE. ALL CONDUCTORS TO BE NUMBER 14 AWG WIRE UNLESS OTHERWISE NOTED
- CONFIRMATION BEACON
- EMERGENCY VEHICLE LIGHT DETECTOR
- VEHICLE DETECTOR, INDUCTION LOOP
- PEDESTRIAN PUSHBUTTON DETECTOR
- 12" (300mm) PEDESTRIAN SIGNAL SECTION
- TELEPHONE CONNECTION
- PROPOSED IMAGE SENSOR



NOTE:

- PUSHBUTTON "A" SHALL PLACE A CALL TO PHASES 2 & 4
- PUSHBUTTON "B" SHALL PLACE A CALL TO PHASES 4 & 6
- PUSHBUTTON "C" SHALL PLACE A CALL TO PHASES 3 & 6
- PUSHBUTTON "D" SHALL PLACE A CALL TO PHASES 2 & 3

CABLE PLAN
NOT TO SCALE

- NOTE 1: THESE SECTIONS SHALL BE BAGGED AND THE PROTECTED/PERMITTED LEFT TURN PHASE BE DISCONNECTED UPON THE COMPLETION OF M.O.T. STAGE III-B.
- NOTE 2: THESE SIGNAL HEADS, AND CORRESPONDING "LEFT ON GREEN ARROW ONLY" SIGNS SHALL BE INSTALLED AFTER THE COMPLETION OF M.O.T. STAGE III-B AND PRIOR TO THE START OF M.O.T. STAGE IV.

NOTE:
THE TRAFFIC SIGNAL CONTROLLER EQUIPMENT FOR THIS PROJECT SHALL BE "ECONOLITE" TO MATCH THE EXISTING ADJACENT SYSTEM.

I.D.O.T. TRAFFIC SIGNAL INSTALLATION ELECTRICAL SERVICE REQUIREMENTS					TOTAL WATTAGE
TYPE	NO. LAMPS	WATTAGE		% OPERATION	
		INCAND.	LED		
SIGNAL (RED)	17	135		0.50	1148
(YELLOW)	13	135		0.25	439
(GREEN)	17	135		0.25	574
ARROW	8	135		0.10	108
PED SIGNAL	8	90		1.00	720
CONTROLLER	1	100		1.00	100
VIDEO SYSTEMS	1	150		1.00	150
FLASHER				0.50	
TOTAL =					3239

ENERGY COSTS TO: VILLAGE OF SCHAUMBURG
101 SCHAUMBURG COURT
SCHAUMBURG, IL 60197-1899

ENERGY SUPPLY: CONTACT: SAM THOMAS
PHONE: 630-891-7118
COMPANY: COM ED

REVISIONS	
NAME	DATE

ILLINOIS DEPARTMENT OF TRANSPORTATION

TEMPORARY CABLE PLAN AND TEMPORARY PHASE DESIGNATION DIAGRAM

MEACHAM ROAD & DRUMMER DRIVE / NORTH MOTOROLA DRIVEWAY

NOT TO SCALE
DATE 12/20/04

DESIGNED BY JJE
CHECKED BY KMM