

**INDEX OF SHEETS**

- SHEET NO.
- COVER SHEET
  - LEGEND, GENERAL NOTES, SUMMARY OF QUANTITIES, & TYPICAL SECTIONS
  - SECTIONS
  - 63RD STREET AND WILLIAMS PLAN
  - CHESTNUT AVENUE, 63RD STREET AND RIDGE PLAN
  - CASS AND 63RD STREET, CASS AND 65TH STREET PLAN
  - OGDEN AVENUE AND ROSLYN PLAN
  - OGDEN AVENUE AND PARK PLAN
  - OGDEN AVENUE AND BLACKHAWK DRIVE PLAN
  - CASS AVENUE AND BENN PLAN
  - BLACKHAWK DRIVE AT CHESTNUT PLAN
  - BLACKHAWK TO OAKWOOD AND DALLAS TO RICHMOND
  - 13.-15. MISCELLANEOUS DETAILS

Revised 2-8-05

**CONTACT**

VILLAGE OF WESTMONT ENGINEERING DIVISION CONTACT: NORIEL NORIEGA OFFICE: 630-829-4465 FAX: 630-829-4469 24 HR: 630-968-2151	BURNS & MCDONNELL CONTACT: ANTHONY BRYANT OFFICE: 630-990-0300 FAX: 630-990-0301	IDOT CONTACT: OFFICE: FAX:	DJDOT CONTACT: OFFICE: FAX:
--	---	-------------------------------------	--------------------------------------

**STATE STANDARDS**

- |           |   |
|-----------|---|
| 000001-04 | STANDARD SYMBOL, ABBREVIATIONS AND PATTERNS                     |
| 424001-05 | CURB RAMPS FOR SIDEWALKS  |
| 606001-02 | CONCRETE CURB AND COMBINATION CONCRETE CURB AND GUTTER          |
| 602011    | CATCH BASIN, TYPE C   |
| 604036-01 | GRATE, TYPE 8   |
| 701801-03 | LANE CLOSURE, MULTILANE, 1W OR 2W CROSSWALK OR SIDEWALK CLOSURE |
| 702001-05 | TRAFFIC CONTROL DEVICES   |

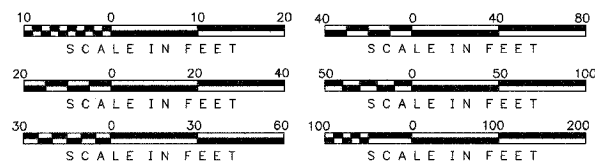
**LENGTH OF PROJECT**

PROJECT LENGTH GROSS = 1.01 MILES (5333 FT.)  
NET = 0.98 MILES (5174 FT.)

**DESIGN DESIGNATION - SIDEWALK**

**TRAFFIC DATA**

OGDEN AVE. ADT = 36,300  
SPEED LIMIT = 35 MPH  
CASS AVE. ADT = 22,000  
SPEED LIMIT = 35 MPH  
63rd STREET ADT = <25,000  
SPEED LIMIT = 40 MPH



FULL SIZE PLANS HAVE BEEN PREPARED USING STANDARD ENGINEERING SCALES. REDUCED SIZED PLANS WILL NOT CONFORM TO STANDARD SCALES. IN MAKING MEASUREMENT ON REDUCED PLANS, THE ABOVE SCALES MAY BE USED.

**CONTRACT NO.: 83787**

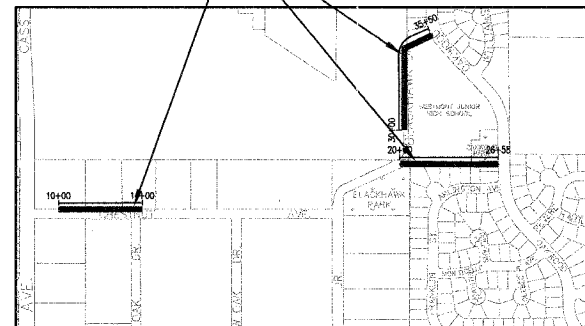
STATE OF ILLINOIS  
DEPARTMENT OF TRANSPORTATION  
DIVISION OF HIGHWAYS

**PLANS FOR PROPOSED  
FEDERAL AID HIGHWAY**

MISCELLANEOUS SIDEWALKS  
FAP 0311 (Ogden Ave.), 63rd Street, Cass Ave., Chestnut Ave.  
PROJECT NO.: CMM-8003 (289)  
SECTION NO.: 03-00090-00-SW  
VILLAGE OF WESTMONT  
DU PAGE COUNTY  
JOB NO.: C-91-106-03

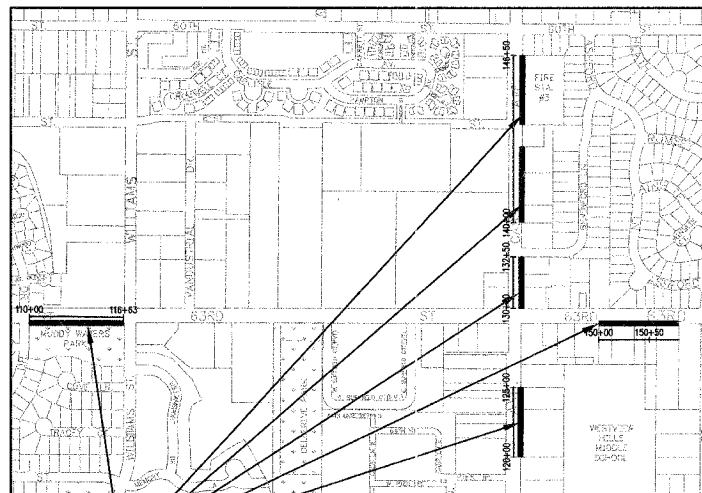
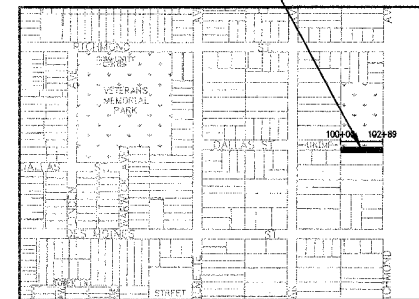
**PROJECT LOCATION**

STA. 10+00 - STA. 14+00  
STA. 20+00 - STA. 26+58  
STA. 30+00 - STA. 35+50

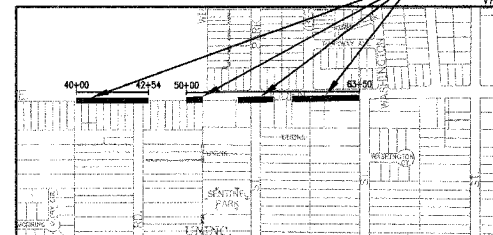
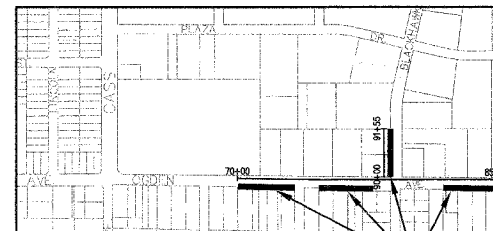


**PROJECT LOCATION**

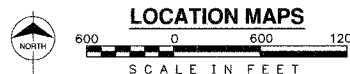
STA. 100+00 TO STA. 102+89



PROJECT LOCATION  
VARIOUS STATIONS



PROJECT LOCATION  
VARIOUS STATIONS



LOCATION MAPS

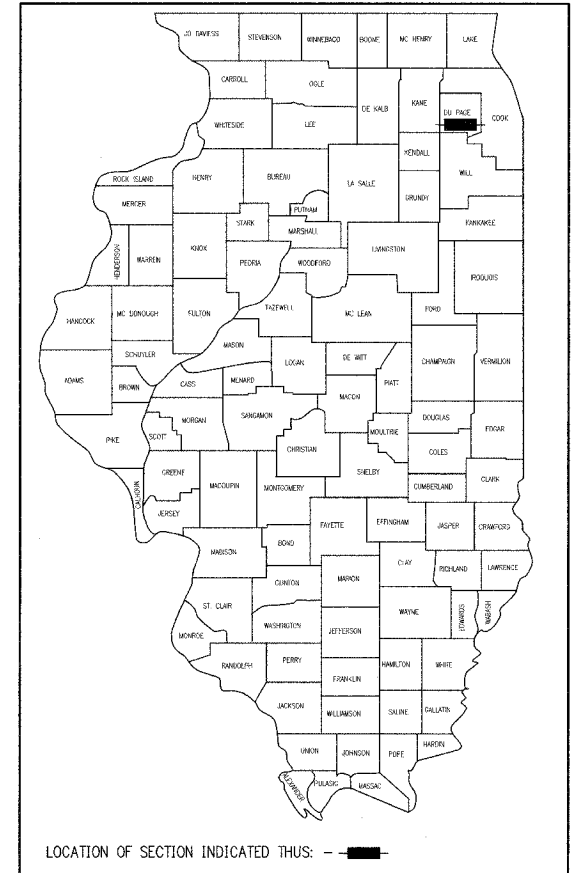
TOWNSHIP: 38 DOWNERS GROVE TOWNSHIP NORTH  
RANGE: 11

**WARNING**



F.A.P. RTE.	SECTION	COUNTY	TOTAL SHEETS	SHEET NO.
0311	03-00090-00-SW	DU PAGE	15	1
FEDERAL RD. DIST. NO.		ILLINOIS	FEDERAL AID PROJECT	
CONTRACT: 83787				

CALL  
**J.U.L.I.E.**  
BEFORE YOU DIG  
**1-800-892-0123**



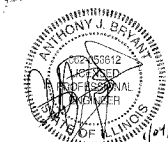
LOCATION OF SECTION INDICATED THUS: - - -

STATE OF ILLINOIS  
DEPARTMENT OF TRANSPORTATION  
DIVISION OF HIGHWAYS

APPROVED JAN. 6, 20 05  
*William J. Leathers* VILLAGE ENGINEER

APPROVED January 10, 20 05  
*Paul Wilson* ENGINEER OF LOCAL ROADS AND STREETS

APPROVED January 10, 20 05  
*Diana O'Keefe* DISTRICT ENGINEER



ANTHONY J. BRYANT, P.E.  
NO. 062-056612  
EXP. DATE: 11/30/2005

**PRINTED BY THE AUTHORITY  
OF THE STATE OF ILLINOIS**

I.D.O.T. FEDERAL AID DESIGN ENGINEER: CHARLES RIDDLE TEL: 847-705-4406  
CONSULTANTS: BURNS & MCDONNELL ENGINEERING, CO. 630-990-0300



IL DESIGN FIRM NO.  
184-001310