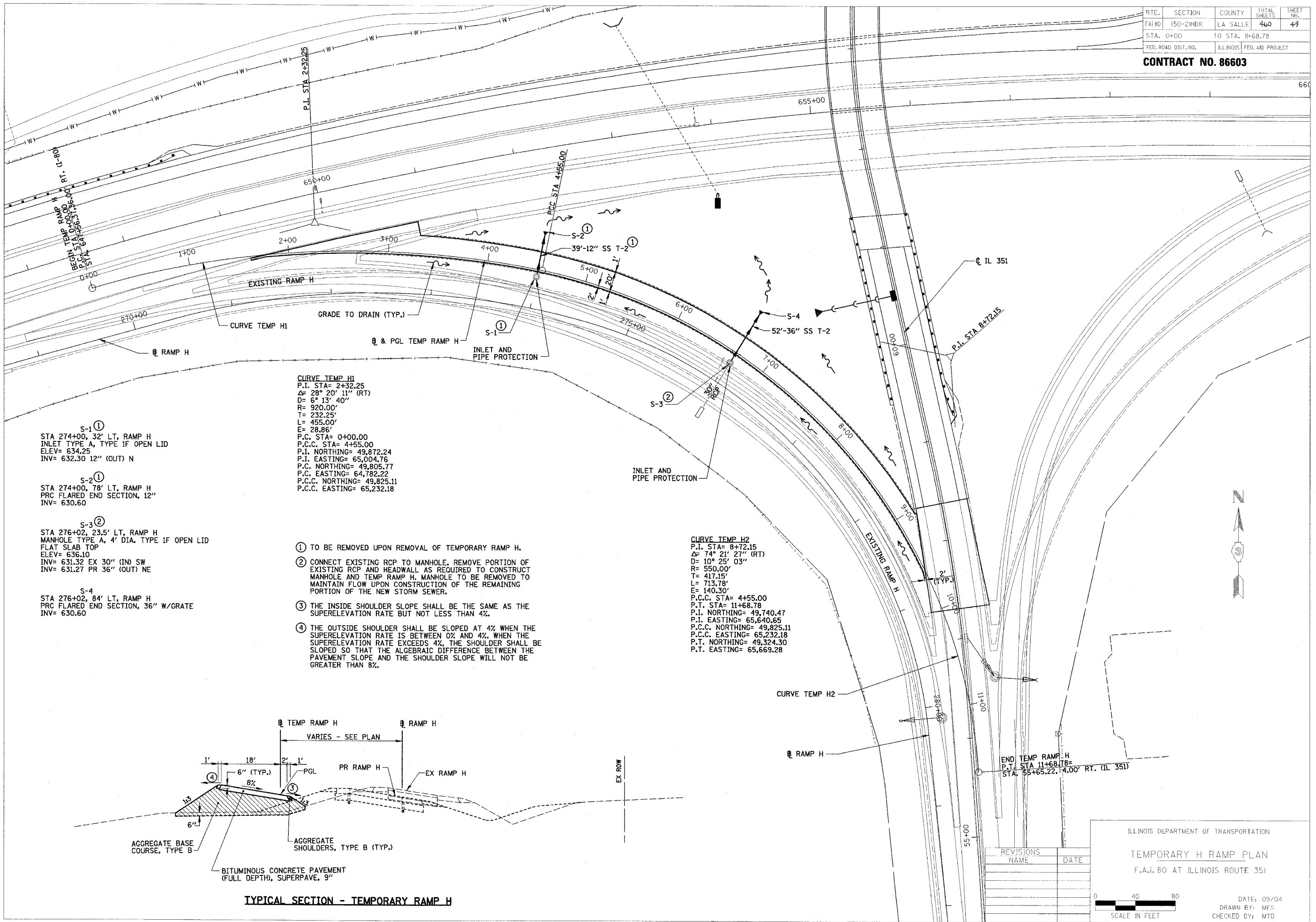


RTE.	SECTION	COUNTY	TOTAL SHEETS	SHEET NO.
FAI 80	150-2HBR	LA SALLE	460	49
STA. 0+00	TO STA. 11+68.78			
FED. ROAD DIST. NO.	ILLINOIS	FED. AID PROJECT		

CONTRACT NO. 86603

660

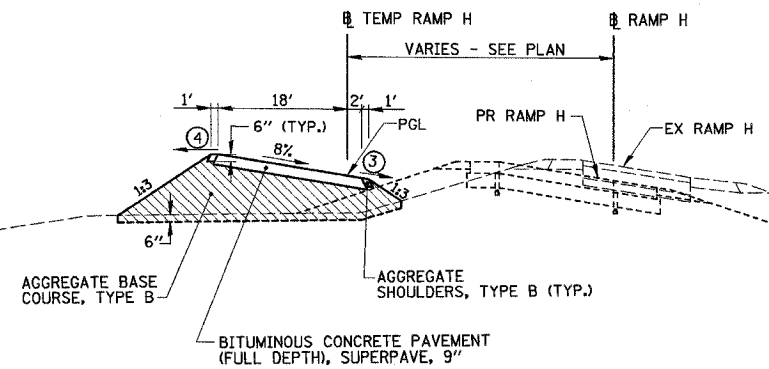


- S-1 ①
STA 274+00, 32' LT, RAMP H
INLET TYPE A, TYPE IF OPEN LID
ELEV= 634.25
INV= 632.30 12" (OUT) N
- S-2 ①
STA 274+00, 78' LT, RAMP H
PRC FLARED END SECTION, 12"
INV= 630.60
- S-3 ②
STA 276+02, 23.5' LT, RAMP H
MANHOLE TYPE A, 4' DIA. TYPE IF OPEN LID
FLAT SLAB TOP
ELEV= 636.10
INV= 631.32 EX 30" (IN) SW
INV= 631.27 PR 36" (OUT) NE
- S-4
STA 276+02, 84' LT, RAMP H
PRC FLARED END SECTION, 36" W/GRATE
INV= 630.60

CURVE TEMP H1
P.I. STA= 2+32.25
Δ= 28° 20' 11" (RT)
D= 6° 13' 40"
R= 920.00'
T= 232.25'
L= 455.00'
E= 28.86'
P.C. STA= 0+00.00
P.C.C. STA= 4+55.00
P.I. NORTHING= 49,872.24
P.I. EASTING= 65,004.76
P.C. NORTHING= 49,805.77
P.C. EASTING= 64,782.22
P.C.C. NORTHING= 49,825.11
P.C.C. EASTING= 65,232.18

CURVE TEMP H2
P.I. STA= 8+72.15
Δ= 74° 21' 27" (RT)
D= 10° 25' 03"
R= 550.00'
T= 417.15'
L= 713.78'
E= 140.30'
P.C.C. STA= 4+55.00
P.T. STA= 11+68.78
P.I. NORTHING= 49,740.47
P.I. EASTING= 65,640.65
P.C.C. NORTHING= 49,825.11
P.C.C. EASTING= 65,232.18
P.T. NORTHING= 49,324.30
P.T. EASTING= 65,669.28

- ① TO BE REMOVED UPON REMOVAL OF TEMPORARY RAMP H.
- ② CONNECT EXISTING RCP TO MANHOLE. REMOVE PORTION OF EXISTING RCP AND HEADWALL AS REQUIRED TO CONSTRUCT MANHOLE AND TEMP RAMP H. MANHOLE TO BE REMOVED TO MAINTAIN FLOW UPON CONSTRUCTION OF THE REMAINING PORTION OF THE NEW STORM SEWER.
- ③ THE INSIDE SHOULDER SLOPE SHALL BE THE SAME AS THE SUPERELEVATION RATE BUT NOT LESS THAN 4%.
- ④ THE OUTSIDE SHOULDER SHALL BE SLOPED AT 4% WHEN THE SUPERELEVATION RATE IS BETWEEN 0% AND 4%. WHEN THE SUPERELEVATION RATE EXCEEDS 4%, THE SHOULDER SHALL BE SLOPED SO THAT THE ALGEBRAIC DIFFERENCE BETWEEN THE PAVEMENT SLOPE AND THE SHOULDER SLOPE WILL NOT BE GREATER THAN 8%.



TYPICAL SECTION - TEMPORARY RAMP H

REVISIONS	NAME	DATE

ILLINOIS DEPARTMENT OF TRANSPORTATION

TEMPORARY H RAMP PLAN

F.A.I. 80 AT ILLINOIS ROUTE 351

SCALE IN FEET

DATE: 09/04
DRAWN BY: MES
CHECKED BY: MTD