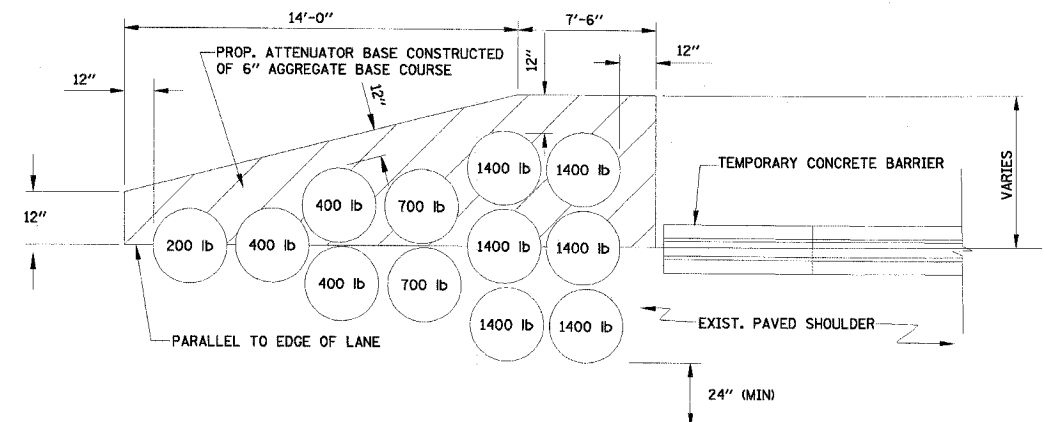


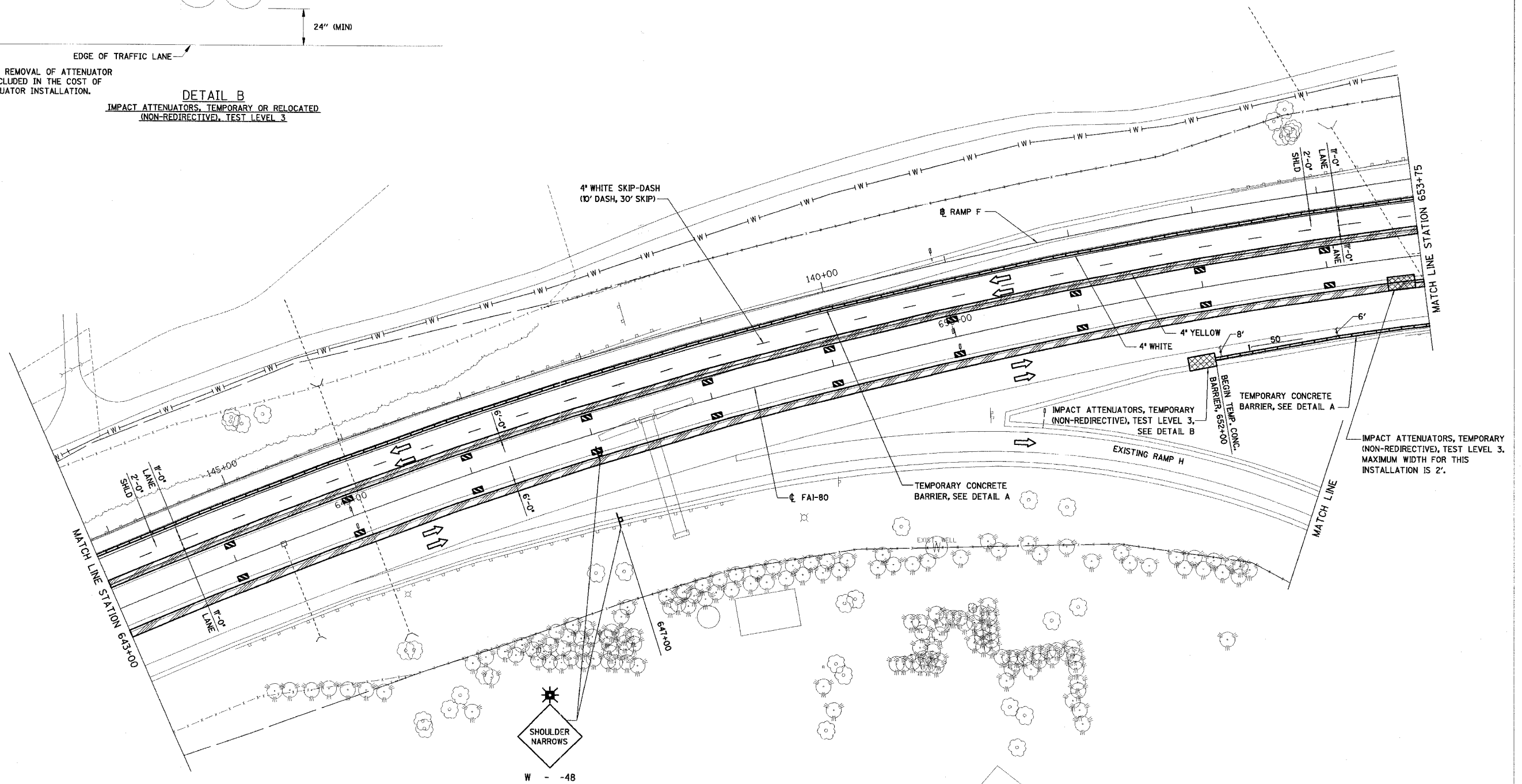
RTE.	SECTION	COUNTY	TOTAL SHEETS	SHEET NO.
FAI-80	150-2HBR	LA SALLE	400	50
STA. 643+00		TO STA. 653+75		
FED. ROAD DIST. NO.		ILLINOIS	FED. AID PROJECT	

CONTRACT NO. 86603



NOTE:
CONSTRUCTION AND REMOVAL OF ATTENUATOR
BASE SHALL BE INCLUDED IN THE COST OF
THE IMPACT ATTENUATOR INSTALLATION.

DETAIL B
IMPACT ATTENUATORS, TEMPORARY OR RELOCATED
(NON-REDIRECTIVE), TEST LEVEL 3



REVISIONS	DATE
NAME	

ILLINOIS DEPARTMENT OF TRANSPORTATION

STAGE I CONSTRUCTION PLAN

F.A.I. 80 AT ILLINOIS ROUTE 351
STATION 643+00 TO STATION 653+75

SCALE IN FEET: 0 40 80

DATE: 09/04
DRAWN BY: MES
CHECKED BY: MTD