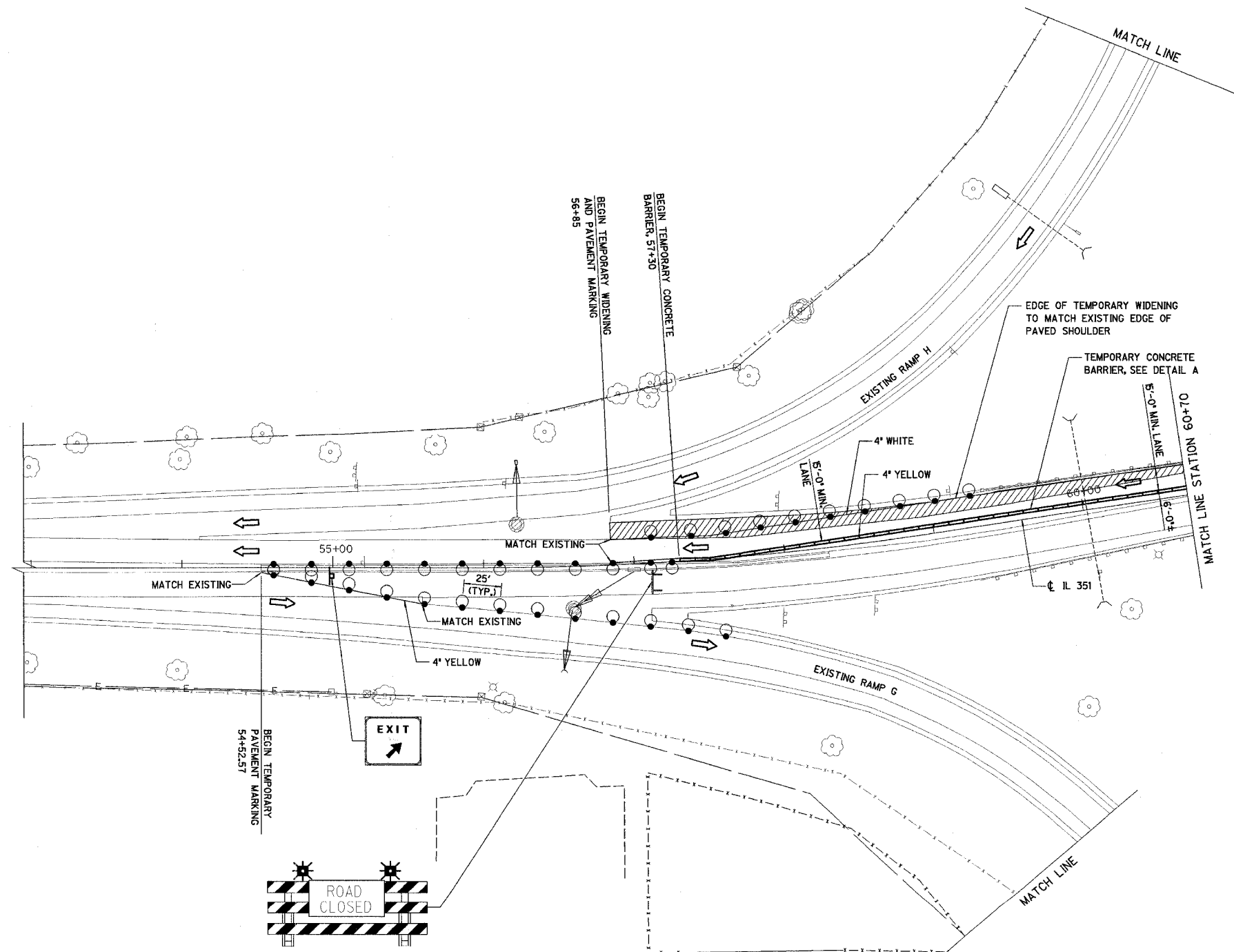


RTE.	SECTION	COUNTY	TOTAL SHEETS	SHEET NO.
FAI 80	(50-2)HBR	LA SALLE	460	59
STA. 52+95		TO STA. 60+70		
FED. ROAD DIST. NO.	ILLINOIS	FED. AID PROJECT		

**CONTRACT NO. 86603**



REVISIONS NAME	DATE

ILLINOIS DEPARTMENT OF TRANSPORTATION  
**STAGE I CONSTRUCTION PLAN**  
 F.A.I. 80 AT ILLINOIS ROUTE 351  
 STATION 52+95 TO STATION 60+70

DATE: 09/04  
 DRAWN BY: MES  
 CHECKED BY: MTD

0 40 80  
 SCALE IN FEET