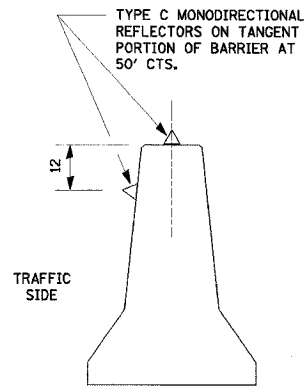
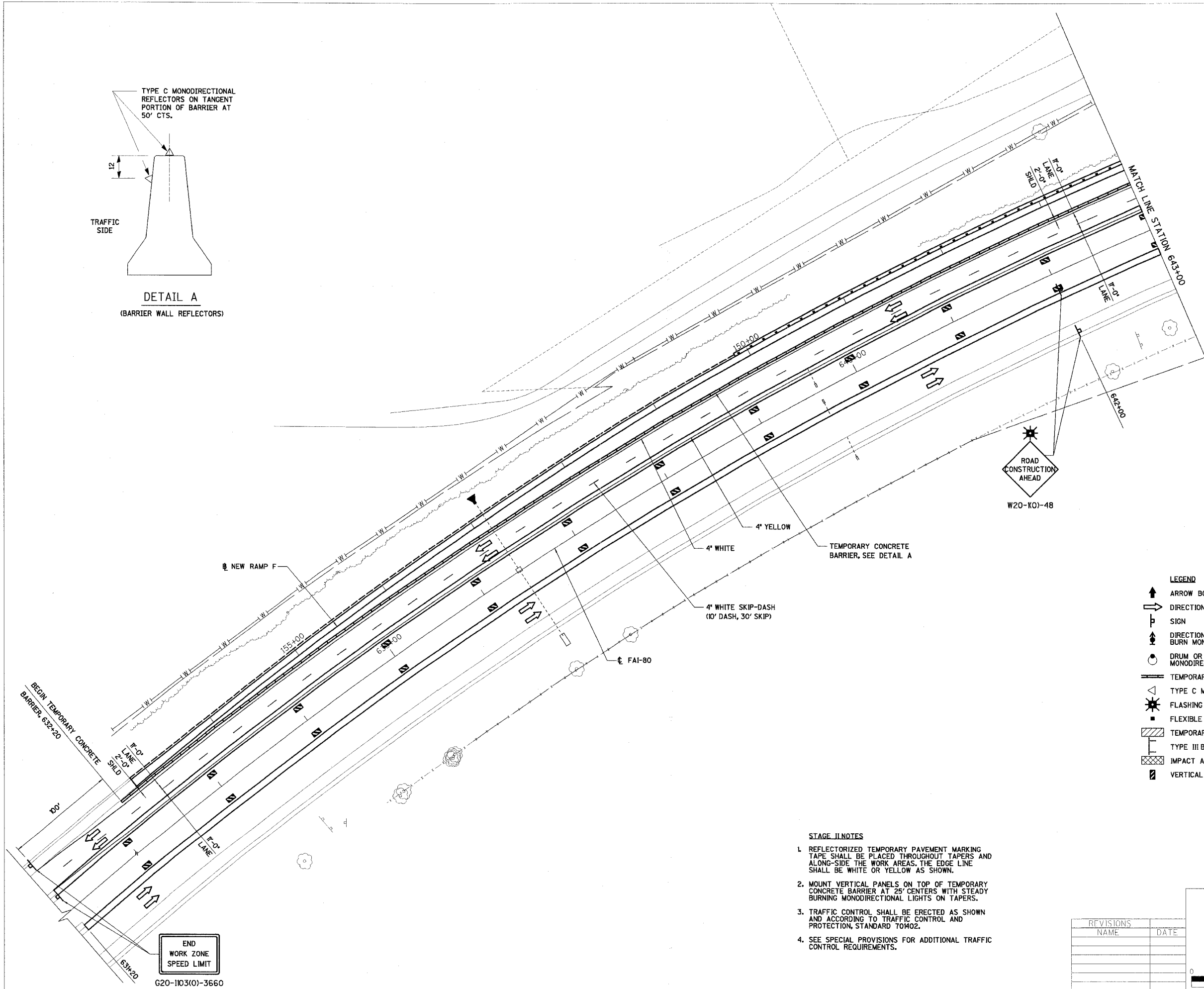


| | | | | |
|---------------------|----------------|------------------|--------------|-----------|
| RTE. | SECTION | COUNTY | TOTAL SHEETS | SHEET NO. |
| FAI80 | 150-2HBR | LA SALLE | 460 | 60 |
| STA. 631+20 | TO STA. 643+00 | | | |
| FED. ROAD DIST. NO. | ILLINOIS | FED. AID PROJECT | | |

CONTRACT NO. 86603



DETAIL A
(BARRIER WALL REFLECTORS)



LEGEND

- ↑ ARROW BOARD
- DIRECTION OF TRAFFIC
- ⊥ SIGN
- ⊥ DIRECTION INDICATOR BARRICADE WITH STEADY BURN MONODIRECTIONAL LIGHT
- ⊙ DRUM OR BARRICADE WITH STEADY BURN MONODIRECTIONAL LIGHT
- ▬ TEMPORARY CONCRETE BARRIER
- △ TYPE C MONODIRECTIONAL REFLECTOR
- ⚡ FLASHING LIGHT
- FLEXIBLE DELINEATOR
- ▨ TEMPORARY WIDENING
- ⊥ TYPE III BARRICADE
- ▩ IMPACT ATTENUATORS
- ▭ VERTICAL PANEL

STAGE II NOTES

1. REFLECTORIZED TEMPORARY PAVEMENT MARKING TAPE SHALL BE PLACED THROUGHOUT TAPERS AND ALONG-SIDE THE WORK AREAS. THE EDGE LINE SHALL BE WHITE OR YELLOW AS SHOWN.
2. MOUNT VERTICAL PANELS ON TOP OF TEMPORARY CONCRETE BARRIER AT 25' CENTERS WITH STEADY BURNING MONODIRECTIONAL LIGHTS ON TAPERS.
3. TRAFFIC CONTROL SHALL BE ERECTED AS SHOWN AND ACCORDING TO TRAFFIC CONTROL AND PROTECTION, STANDARD T0402.
4. SEE SPECIAL PROVISIONS FOR ADDITIONAL TRAFFIC CONTROL REQUIREMENTS.

| REVISIONS | DATE |
|-----------|------|
| NAME | |
| | |
| | |
| | |
| | |

ILLINOIS DEPARTMENT OF TRANSPORTATION

STAGE II CONSTRUCTION PLAN

F.A.I. 80 AT ILLINOIS ROUTE 351
STATION 631+20 TO STATION 643+00

SCALE IN FEET: 0 40 80

DATE: 09/04
DRAWN BY: MFS
CHECKED BY: MTD

G20-1103(0)-3660