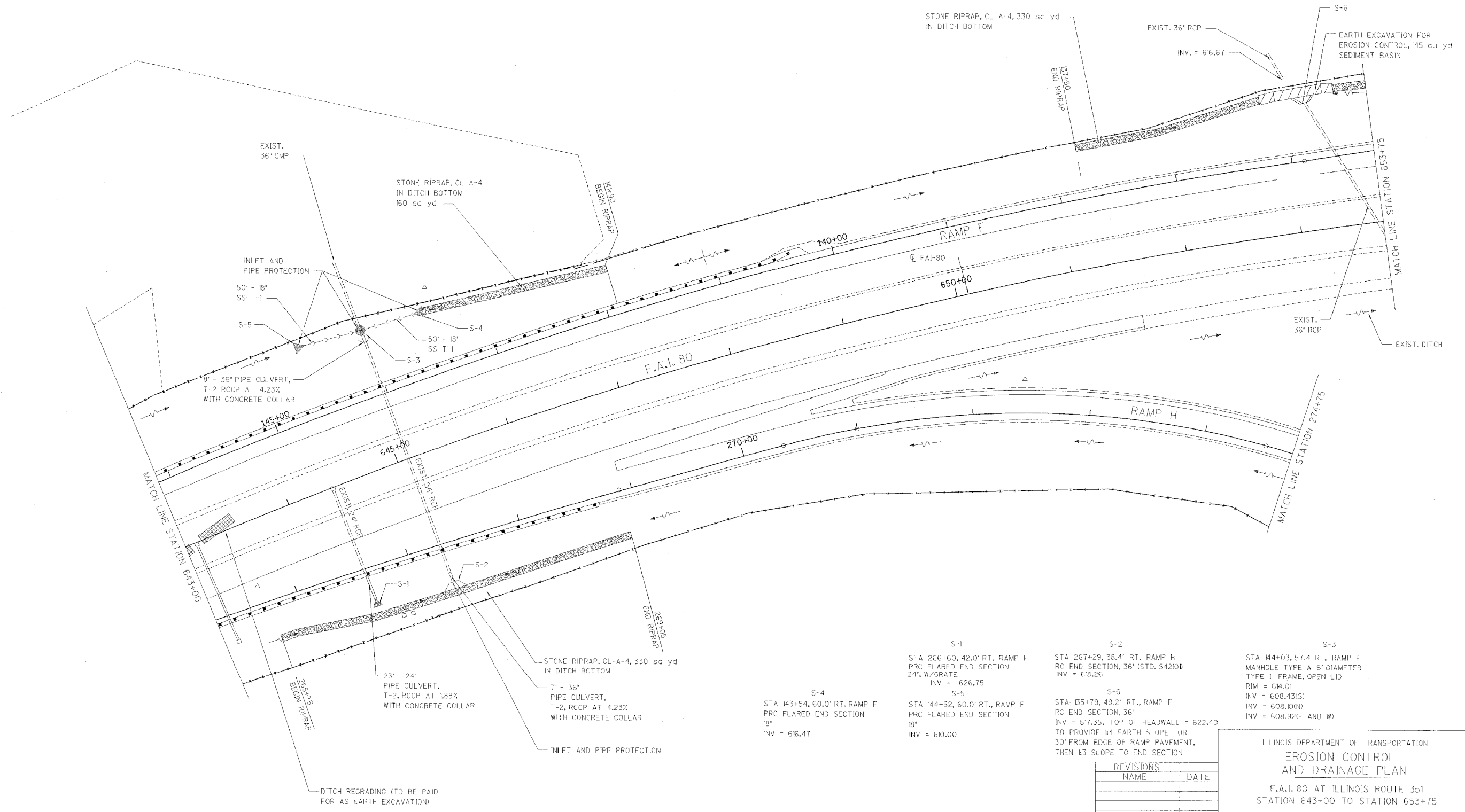


RTE.	SECTION	COUNTY	TOTAL SHEETS	SHEET NO.
FAI80	150-24HR	LA SALLF	460	84
STA. 643+00		TO STA. 653+75		
FED. ROAD DIST. NO.		ILLINOIS FED. AID PROJECT		

CONTRACT NO. 86603



S-1
STA 266+60, 42.0' RT., RAMP H
PRC FLARED END SECTION
24", W/GRATE
INV = 626.75

S-2
STA 267+29, 38.4' RT., RAMP H
RC END SECTION, 36" (STD. 542) W/GRATE
INV = 618.26

S-3
STA 144+03, 57.4 RT., RAMP F
MANHOLE TYPE A 6' DIAMETER
TYPE I FRAME, OPEN LID
RIM = 614.01
INV = 608.43(S)
INV = 608.10(N)
INV = 608.92(E AND W)

S-4
STA 143+54, 60.0' RT., RAMP F
PRC FLARED END SECTION
18"
INV = 616.47

S-5
STA 144+52, 60.0' RT., RAMP F
PRC FLARED END SECTION
18"
INV = 610.00

S-6
STA 135+79, 49.2' RT., RAMP F
RC END SECTION, 36"
INV = 617.35, TOP OF HEADWALL = 622.40
TO PROVIDE 1:4 EARTH SLOPE FOR
30' FROM EDGE OF RAMP PAVEMENT,
THEN 1:3 SLOPE TO END SECTION

REVISIONS	NAME	DATE

ILLINOIS DEPARTMENT OF TRANSPORTATION
**EROSION CONTROL
AND DRAINAGE PLAN**
F.A.I. 80 AT ILLINOIS ROUTE 351
STATION 643+00 TO STATION 653+75

DATE: 09/04
DRAWN BY: JOK
CHECKED BY: MTD

0 40 80
SCALE IN FEET