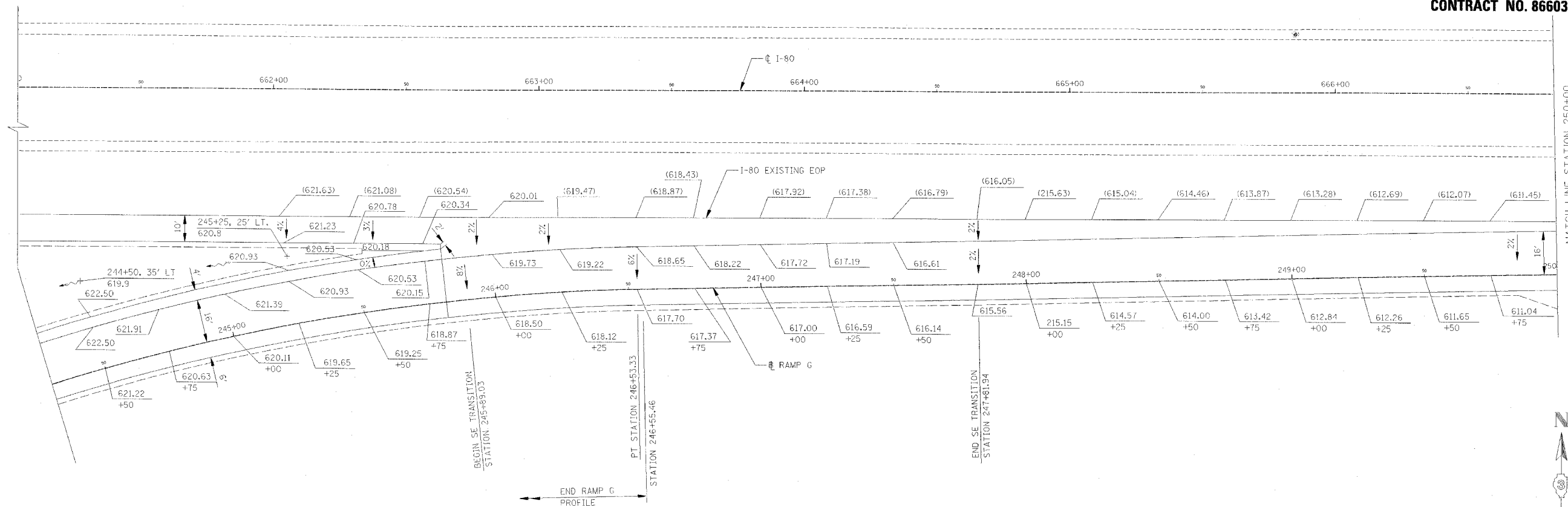


RTE.	SECTION	COUNTY	TOTAL SHEETS	SHEET NO.
FA180	(50-2)HBR	LA SALLE	460	93
STA.		TO STA.		
FED. ROAD DIST. NO.		ILLINOIS	FED. AID PROJECT	

CONTRACT NO. 86603

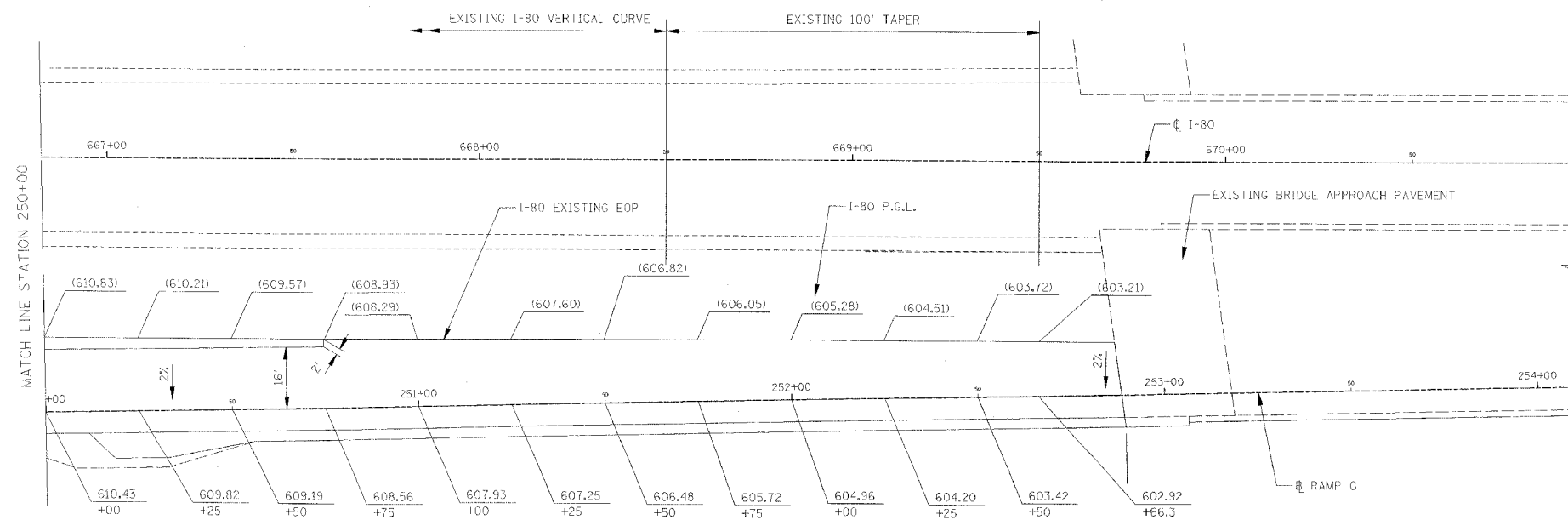


LEGEND

(XXX.XXX) EXISTING ELEVATION
 XXX.XXX PROPOSED ELEVATION

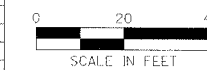
NOTES

FOR ADDITIONAL RAMP DETAILS, SEE ROADWAY PLAN SHEETS



REVISIONS	NAME	DATE

ILLINOIS DEPARTMENT OF TRANSPORTATION
RAMP TERMINAL ELEVATIONS
 F.A.I. 80 AT ILLINOIS ROUTE 351
 RAMP G



DATE: 09/04
 DRAWN BY: JOK
 CHECKED BY: MTD