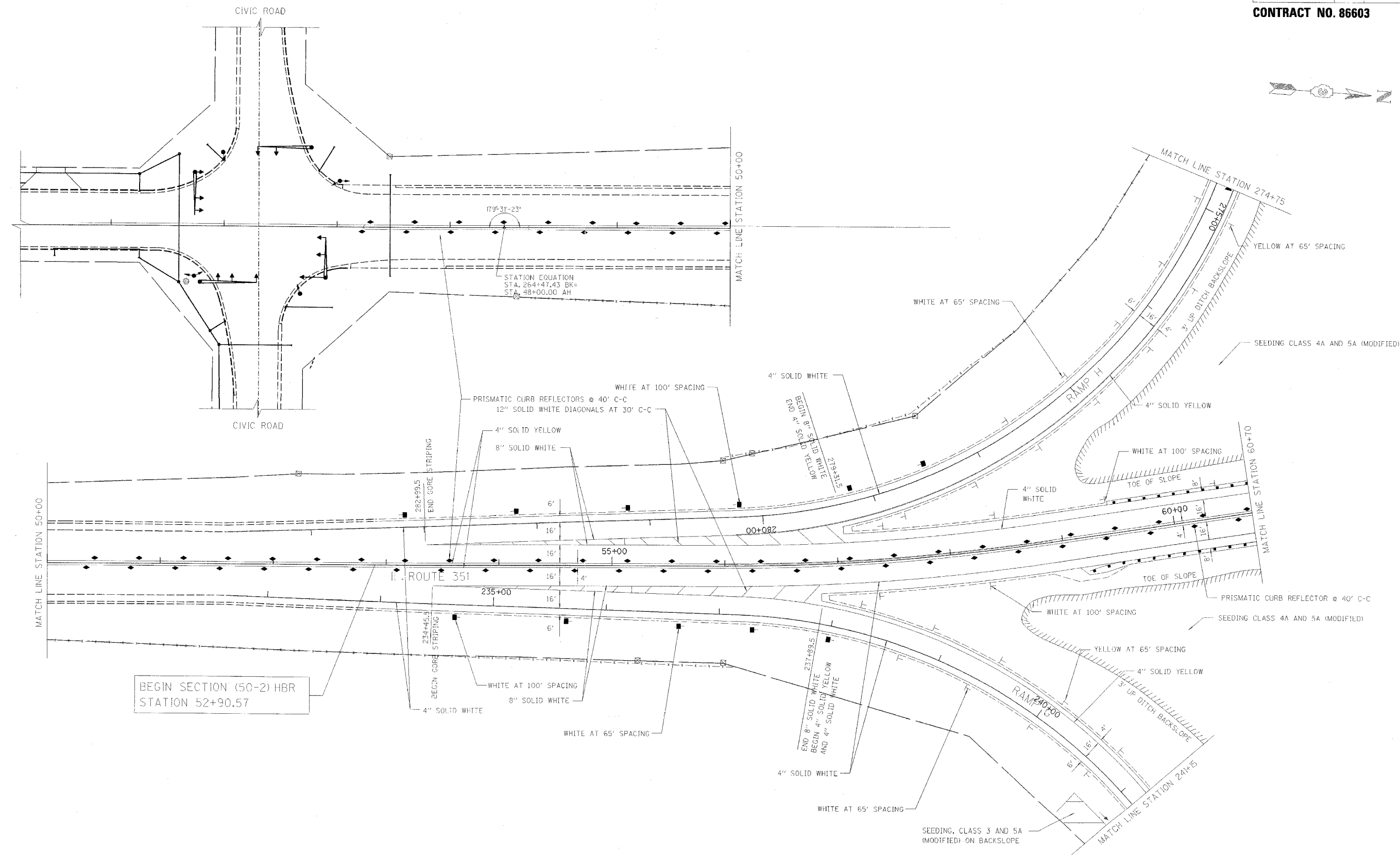


RTE.	SECTION	COUNTY	TOTAL SHEETS	SHEET NO.
FAI 80	(50-2)HBR	LA SALLE	460	100
STA. 260+50		TO STA. 60+70		
FED. ROAD DIST. NO.		ILLINOIS FED. AID PROJECT		

CONTRACT NO. 86603



BEGIN SECTION (50-2) HBR
STATION 52+90.57

REVISIONS	NAME	DATE

ILLINOIS DEPARTMENT OF TRANSPORTATION
PAVEMENT MARKING & LANDSCAPING PLAN
 F.A.I. 80 AT ILLINOIS ROUTE 351
 STATION 260+50 TO STATION 60+70

DATE: 09/04
 DRAWN BY: MES
 CHECKED BY: MTD

0 40 80
 SCALE IN FEET