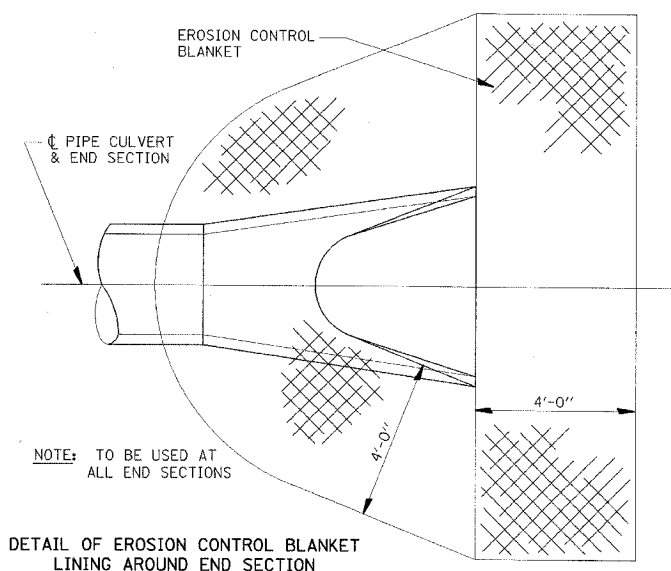
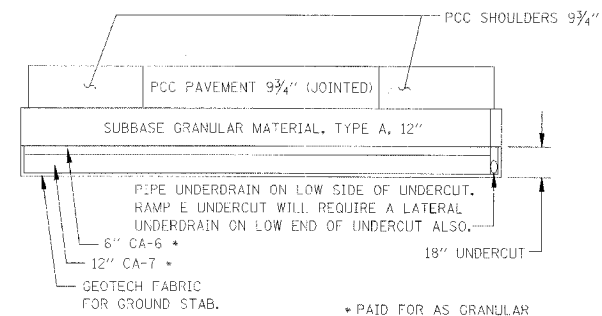


CONTRACT NO. 86603



DETAIL OF EROSION CONTROL BLANKET LINING AROUND END SECTION

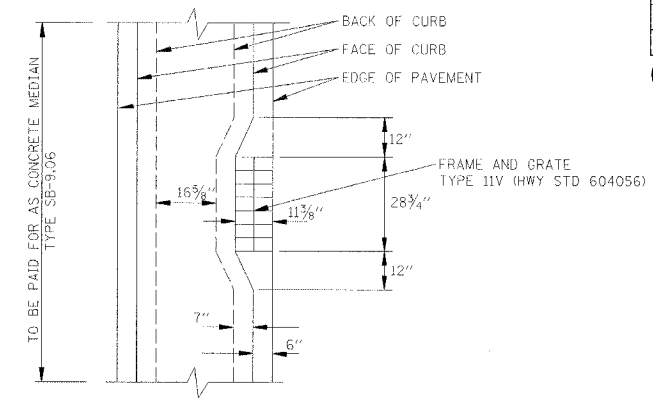
NOTE: PRC FLARED END SECTION SHOWN. TREATMENT SAME FOR OTHER END SECTIONS.



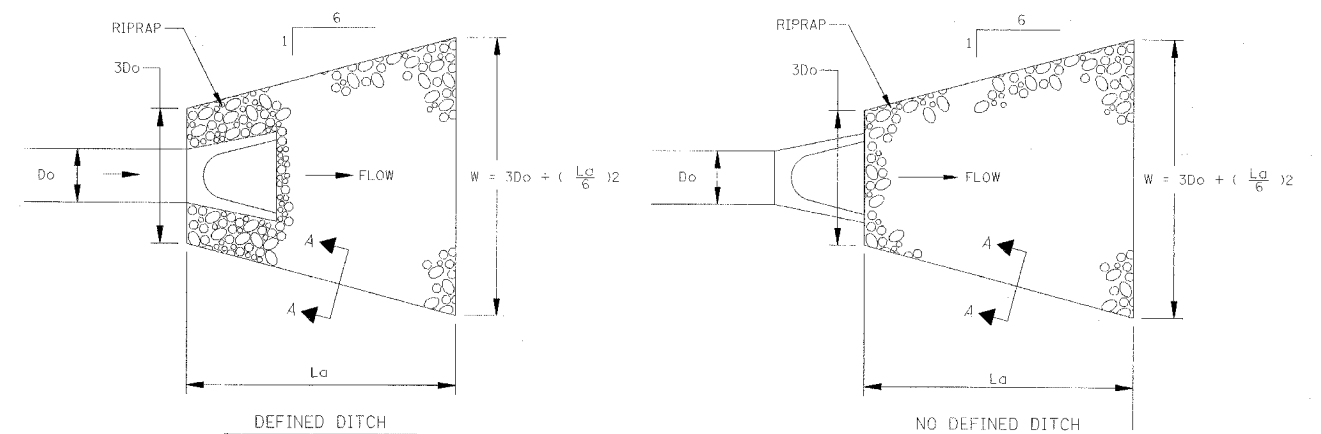
UNDERCUT DETAIL

		EARTH EXC. CU. YD.	GEOTECH FABRIC SQ. YD.	CA-7* TON	CA-6* TON
RAMP E	STA. 177+20 TO 178+90	255	570	350	175
RAMP G	STA. 243+03 TO 245-13	315	700	430	215

* PAID FOR AS GRANULAR EMBANKMENT, SPECIAL

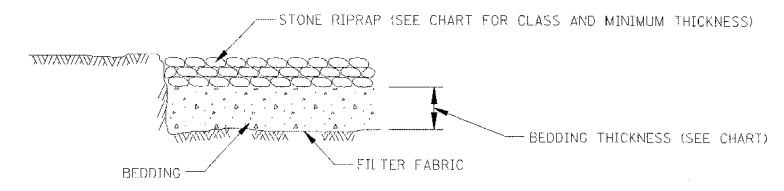


INLET DETAIL IN TYPE SB-9.06 CONC. MEDIAN
(SEE HIGHWAY STANDARDS 606301 AND 606401 FOR ADDITIONAL DETAILS)



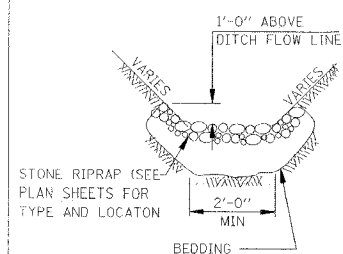
DEFINED DITCH

NO DEFINED DITCH



SECTION A-A

STRUCTURE NUMBER	LOCATION STA.	OFFSET	PIPE SIZE (In.)	DEFINED DITCH	3Do (FOOT)	La (FOOT)	W (FOOT)	RIPRAP			
								CLASS	MINIMUM THICKNESS (In.)	BEDDING THICKNESS (In.)	QUANTITY (SQ. YD.)
S-1	636+39.6	90.0' LT	36	YES	9	6.5	11.2	A4	16	6	4.3
S-1	266+60	42.0' RT	24	YES	6	6.5	8.2	A4	16	6	3.0
S-2	267+29	38.4' RT	36	YES	9	6.5	11.2	A4	16	6	4.3
S-2	61+09	45.3' RT	12	NO	3	10	6.3	A3	8	-	3.2
S-4	63+98	61.7' RT	12	YES	3	6.5	5.2	A3	8	-	1.4
S-6	64+80	78.1' RT	12	YES	3	6.5	5.2	A3	8	-	1.4
S-8	67+26	77.4' RT	12	YES	3	5	4.7	A3	8	-	0.8
S-16	246+14	26.0' RT	24	YES	6	6.5	8.7	A4	16	6	3.0
S-11	128+35	59.0' LT	24	NO	6	20	12.8	A4	16	6	26.0
S-13	243+60	32.5' RT	24	YES	6	6.5	8.2	A4	16	6	3.0
S-2	174+70	31.0' RT	30	YES	7.5	8	10.2	A4	16	6	5.6
S-3	246+88	32.0' RT	12	YES	3	6.5	5.2	A4	16	6	1.4
S-3	55+18	74.0' RT	12	YES	3	5	4.7	A3	8	-	0.8
S-7	58+07	55.8' RT	12	YES	3	8	5.7	A3	8	-	2.2
S-9	60+50	81.5' LT	12	NO	3	10	6.3	A3	8	-	3.2
S-10	276+02	84.0' LT	36	NO	9	20	15.7	A4	16	6	27.4

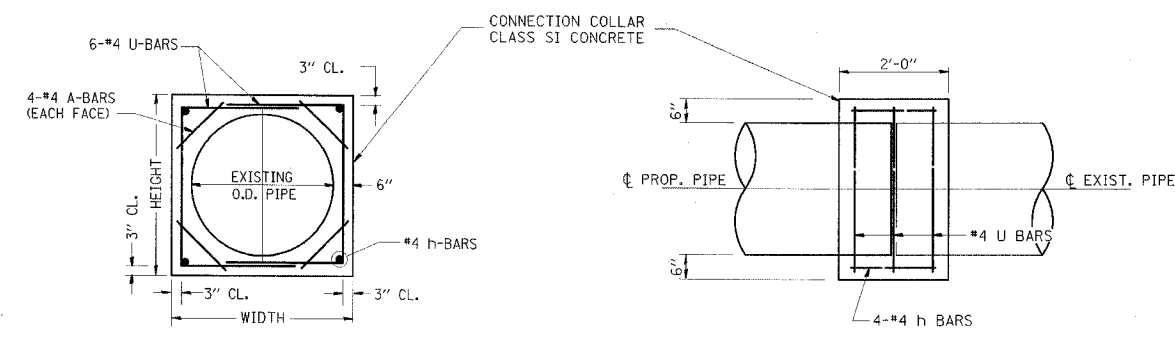


RIPRAP TYPE	MINIMUM RIPRAP THICKNESS (In.)	MINIMUM BEDDING THICKNESS (In.)
A3	8	-
A4	16	6
A5	22	8
A6	26	10
A7	30	12

REVISIONS	
NAME	DATE

ILLINOIS DEPARTMENT OF TRANSPORTATION
ROADWAY AND DRAINAGE DETAILS
F.A.T. 80 AT ILLINOIS ROUTE 351

DATE: 09/04
DRAWN BY: JDK
CHECKED BY: MTD



LOCATION	EXISTING CULVERT SIZE	EXTENSION COLLAR		A-BAR			U-BAR			h-BAR	CONC. COLLAR	REINFORCEMENT BARS
		WIDTH	HEIGHT	12	'X'	'Y'	18	IN.	CU. YD.			
636+39.6	36	56	56	-	34	50	-	0.8	49			
144+03	36	56	56	-	34	50	-	0.8	49			
266+60	24	42	42	-	27	36	-	0.6	40			
267+29	36	56	56	-	34	50	-	0.8	49			
653+97	36	56	56	-	34	50	-	0.8	49			
246+14	24	42	42	-	27	36	-	0.6	40			

COLLAR DETAIL (DIRECT PIPE CULVERT EXTENSION)

MIN. LAP FOR #4 BAR IS 1'-6"