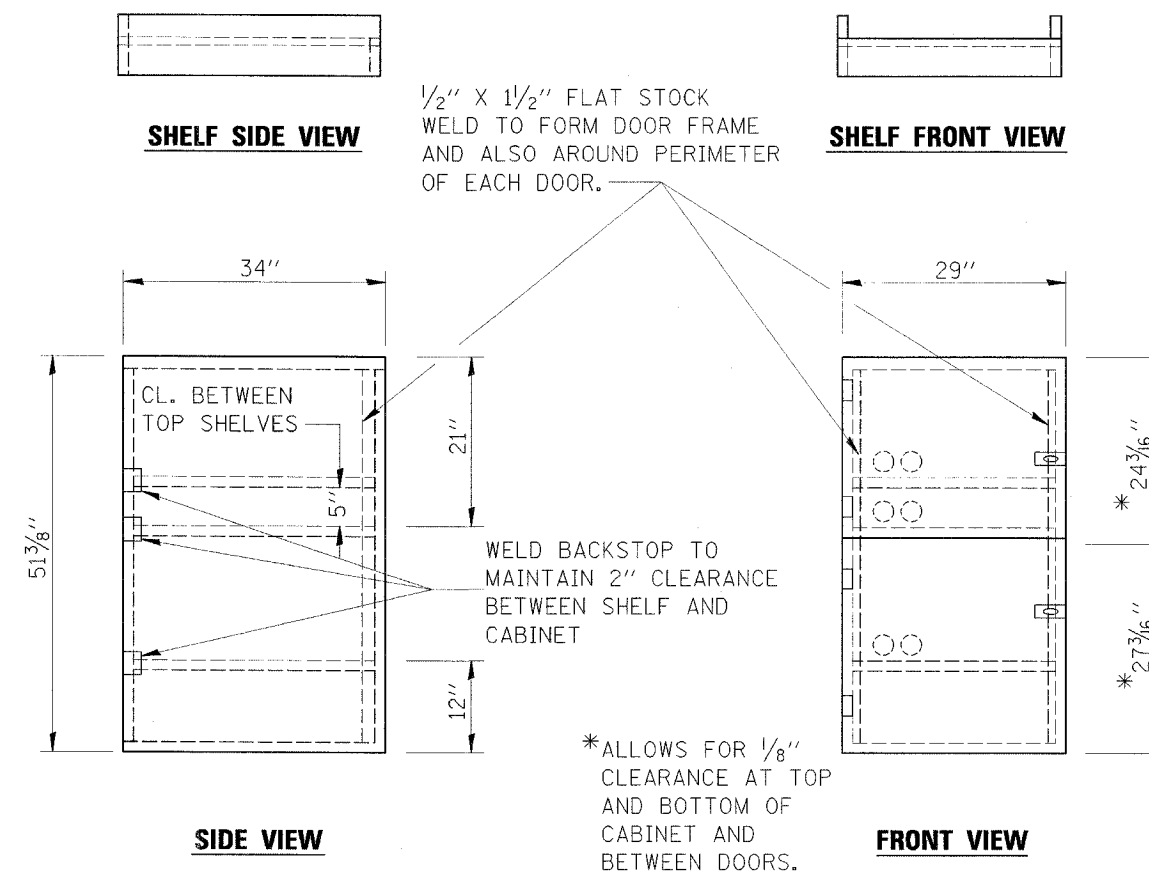
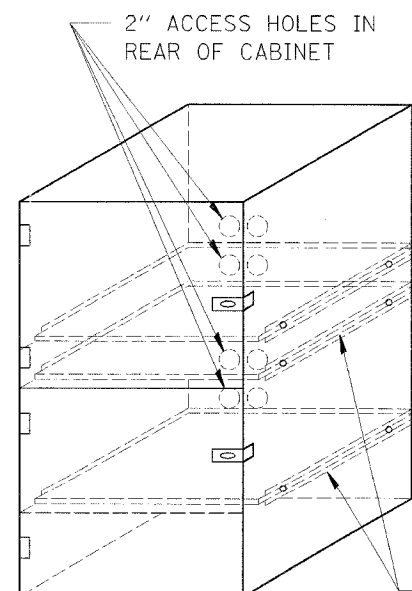


| | | | | |
|-----------------------|-----------|----------|--------------|------------------|
| RTE. | SECTION | COUNTY | TOTAL SHEETS | SHEET NO. |
| FA180 | 150-21HBR | LA SALLE | 460 | 126 |
| STA. | | TO STA. | | |
| FED. ROAD DIST. NO. 7 | | ILLINOIS | | FED. AID PROJECT |

CONTRACT NO. 86603



- NOTES:
1. USE 16 GAUGE STEEL FOR CABINET.
 2. THE TOP SHELF SHALL SLIDE IN OR OUT WITH THE TOP DOOR OPEN.
 3. ALL HINGES AND HASPS WILL BE WELDED TO THE CABINET.
 4. ALL EDGES SHALL BE GROUND SMOOTH.
 5. TWO (2" DIA.) ACCESS HOLES WILL BE REQUIRED FOR EACH SHELF.
 6. CABINET SHALL BE PAINTED WITH TWO COATS OF FLAT PAINT.
 7. 2 EACH MATCHING KEY PADLOCKS, WITH 3 KEYS PROVIDED, MASTER MODEL 3 T OR EQUIVALENT.
 8. 4 EACH PLAIN STEEL, NON-REMOVABLE PIN, NO HOLE 4"X4" SQUARE CORNER HINGES TO BE WELDED ON.
 9. 2 EACH EXTRA HEAVY, PLAIN STEEL, FIXED STAPLE, NO HOLE, 7 1/4 " HASPS TO BE WELDED ON.



FLAT STOCK DIMENSIONS VARY DEPENDING ON TYPE OF ROLLER ASSEMBLY.

LOCKABLE COMPUTER CABINET

| REVISIONS | NAME |
|-----------|------|
| | |
| | |
| | |
| | |
| | |
| | |
| | |

ILLINOIS DEPARTMENT OF TRANSPORTATION

DETAILS

F.A.I. 80 AT ILLINOIS ROUTE 351

SCALE: NONE DRAWN BY: JDK
DATE: 09/04 CHECKED BY: MTD