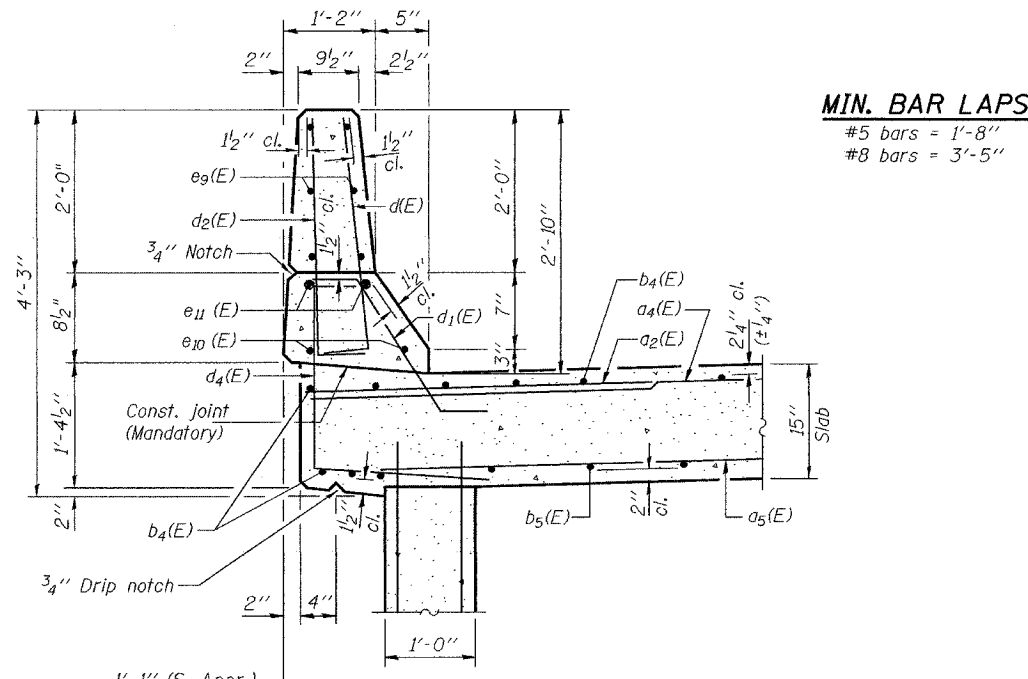


STATE OF ILLINOIS
DEPARTMENT OF TRANSPORTATION

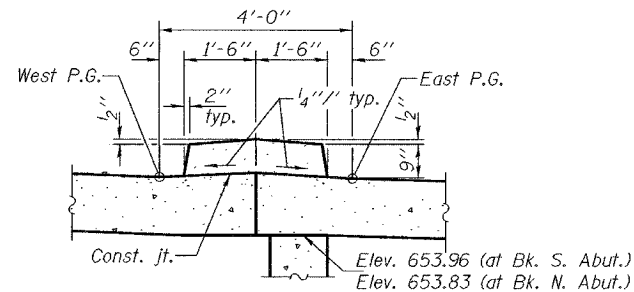
ROUTE NO.	SECTION	COUNTY	SHEET	SHEET NO. 14
F.A.I. 80	(50-2) HBR	LaSALLE	156	35 SHEETS
FED. ROAD DIST. NO. 7	ILLINOIS	FED. AID PROJECT-		

Contract No. 86603

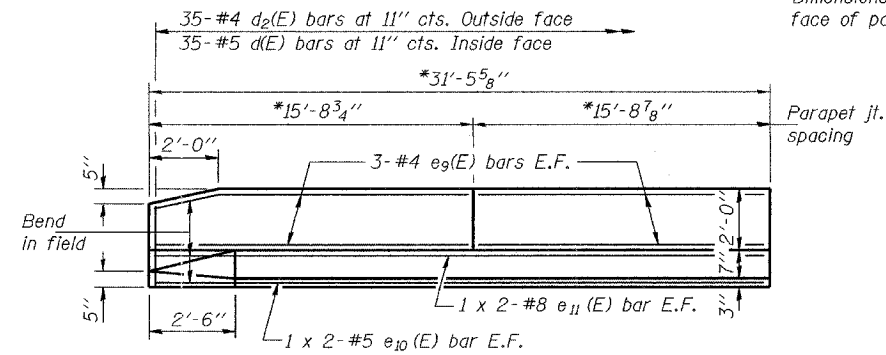


SECTION THRU PARAPET

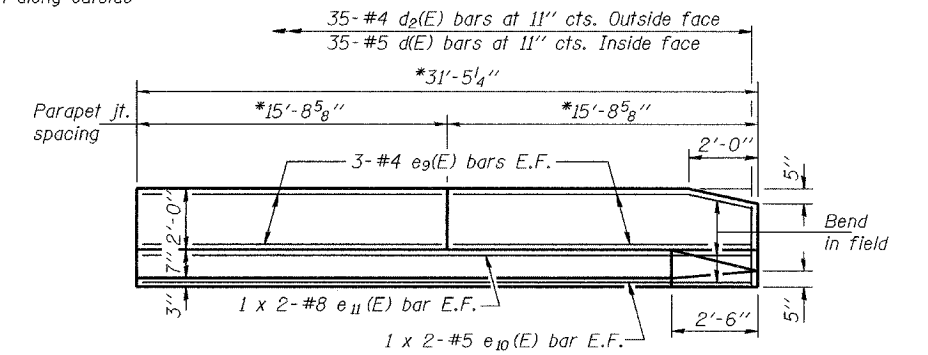
Notes: Bars indicated thus 20 x 3-#5 etc. indicates 20 lines of bars with 3 lengths per line. Reinforcement bars designated (E) shall be epoxy coated. For bar splicer details, see sheet 29 of 35. For parapet joint details, see sheet 10 of 35.



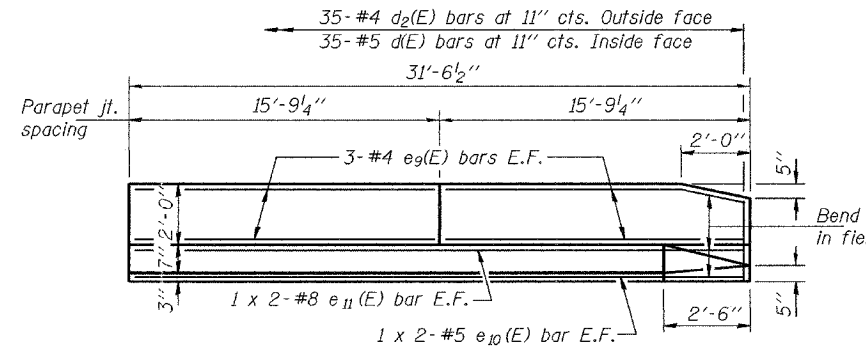
DETAIL A



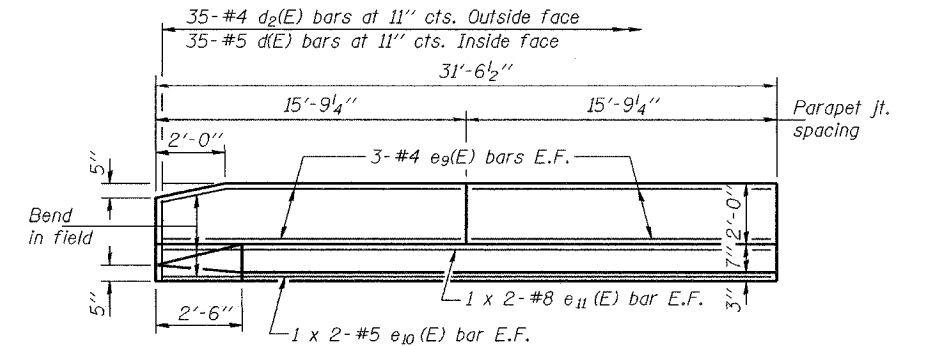
ELEVATION OF EAST PARAPET - N. APPR.
(Looking East)



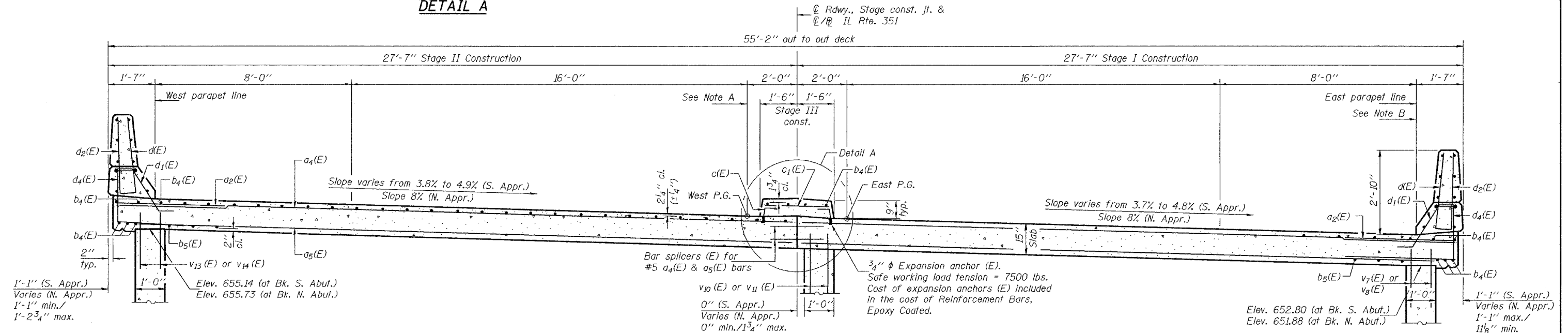
ELEVATION OF WEST PARAPET - N. APPR.
(Looking West)



ELEVATION OF EAST PARAPET - S. APPR.
(Looking East)



ELEVATION OF WEST PARAPET - S. APPR.
(Looking West)



CROSS SECTION

(Horizontal dimensions measured radially - N. Appr.;
Horizontal dimension measured at right L's - S. Appr.)
(Looking North)

Note A: S. Appr. : Total drop varies. Drop is measured from West parapet line to West P.G.
N. Appr. : Total drop = 1'-11" constant across approach slab. Drop is measured from West parapet line to West P.G.

Note B: S. Appr. : Total drop varies. Drop is measured from East P.G. to East parapet line.
N. Appr. : Total drop = 1'-11" constant across approach slab. Drop is measured from East P.G. to East parapet line.

DESIGNED	RLM
CHECKED	CME
DRAWN	h.t. parsons
CHECKED	RLM/CME

Nov. 29, 2004
EXAMINED *Thomas Demagali*
PASSED *Ralph E. Anderson*
ENGINEER OF BRIDGE DESIGN
ENGINEER OF BRIDGES AND STRUCTURES

APPROACH SLAB DETAILS
F.A.I. RT. 80 - SEC. (50-2)HBR
LaSALLE COUNTY
STATION 62+39.22
STRUCTURE NO. 050-0230