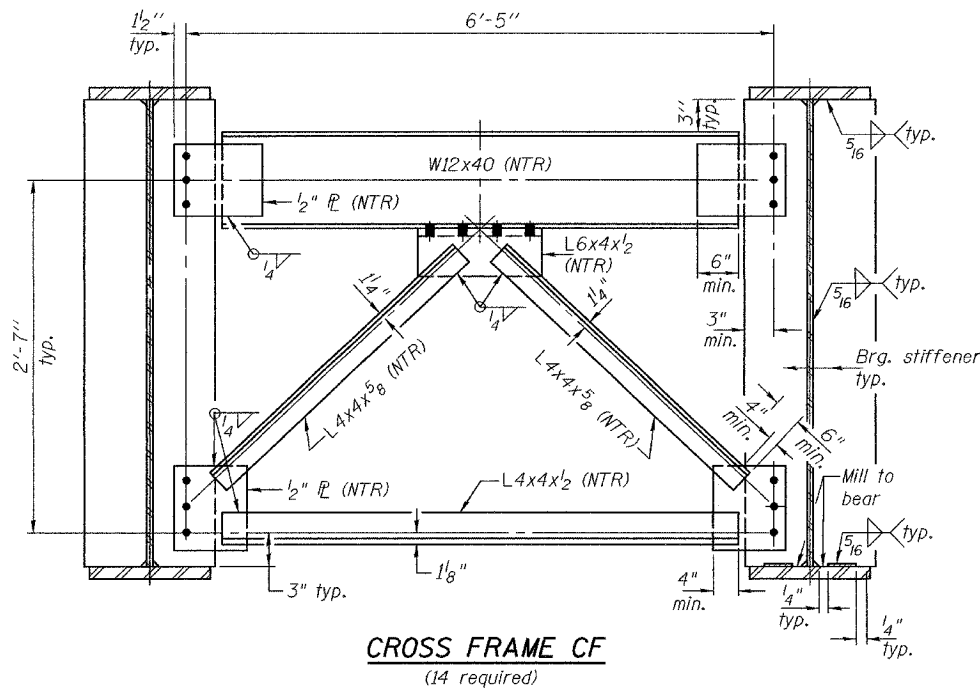


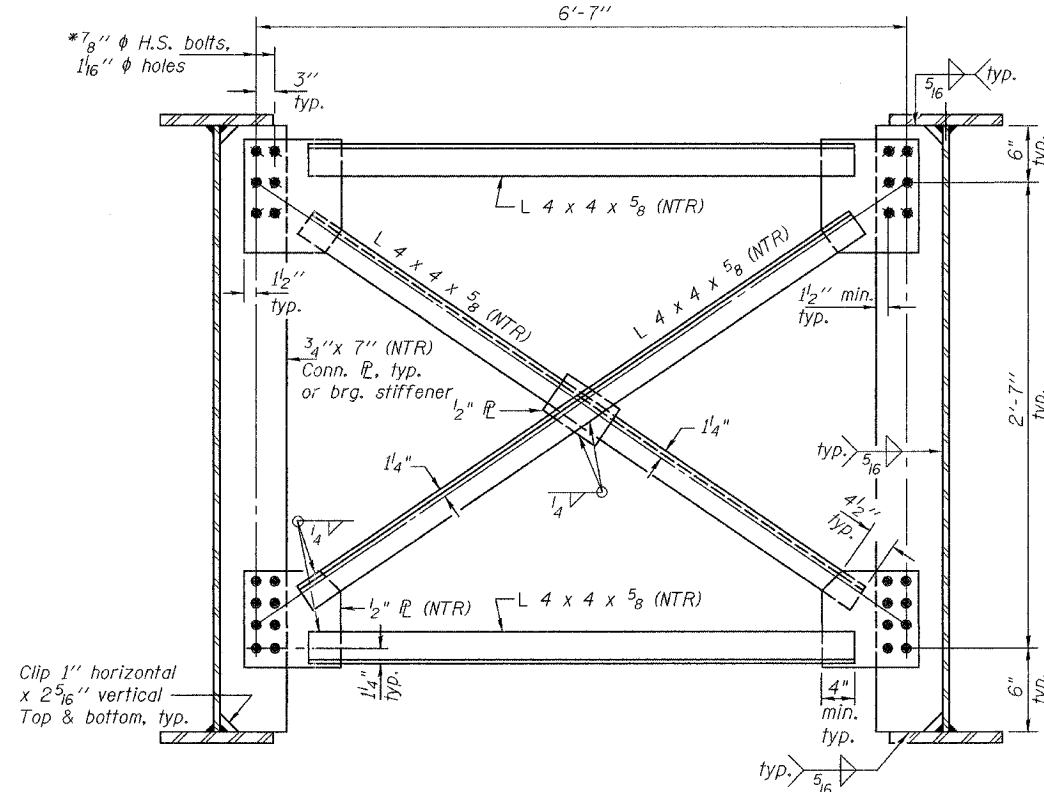
STATE OF ILLINOIS
DEPARTMENT OF TRANSPORTATION

ROUTE NO.	SECTION	COUNTY	SHEETS	SHEET NO.
F.A.I. 80	(50-2) HBR	LaSALLE	161	35 SHEETS
FED. ROAD DIST. NO. 7	ILLINOIS	FED. AID PROJECT-	Contract No. 86603	



CROSS FRAME CF
(14 required)

* Use 1/2" vertical x 1 5/16" slotted holes in top and bottom of 1/2" plates for East side of Girder 4 cross frames CF₁ except at pier. The bolts for the slotted holes in Girder 4 shall only be finger tightened prior to the deck slab pouring of Stage II Construction and then fully tightened after completion of Stage II Construction.

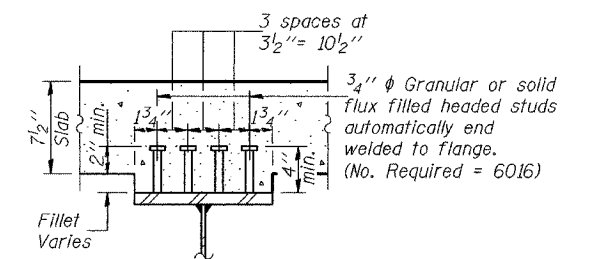


CROSS FRAME CF₁
(70 required)

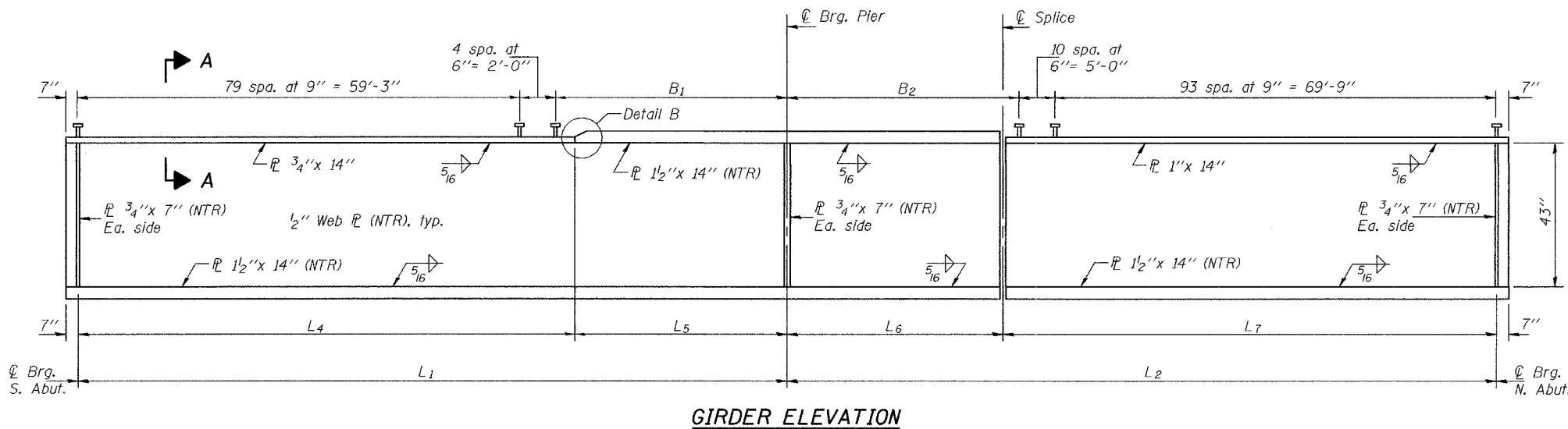
Notes: Two hardened washers shall be required over all oversized holes for cross frames.
"NTR" denotes elements to which notch toughness requirements are applicable.
For dimensions L₁, L₂, L₄, L₅, L₆, and L₇, see sheet 18 of 35.
All plates of the girders, including bearing stiffeners, shall be AASHTO M 270, Grade 50.
Use 7/8" φ H.S. bolts in all cross frames with 1 1/8" holes.
Omit connecting plates on exterior side of exterior girders

TABLE FOR B1 & B2

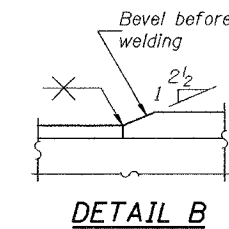
Girder No.	B1	B2
1	22'-7 7/8"	21'-4 3/8"
2	22'-8"	21'-4 3/8"
3	22'-8 1/8"	21'-4 3/8"
4	22'-8 1/8"	21'-4 1/16"
5	22'-8 3/16"	21'-4 1/16"
6	22'-8 1/4"	21'-4 1/2"
7	22'-8 3/16"	21'-4 1/2"
8	22'-8 3/8"	21'-4 1/2"



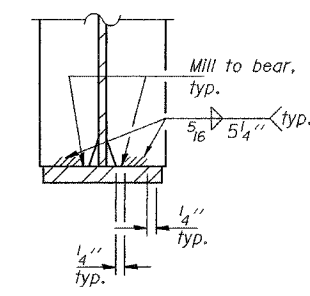
SECTION A-A



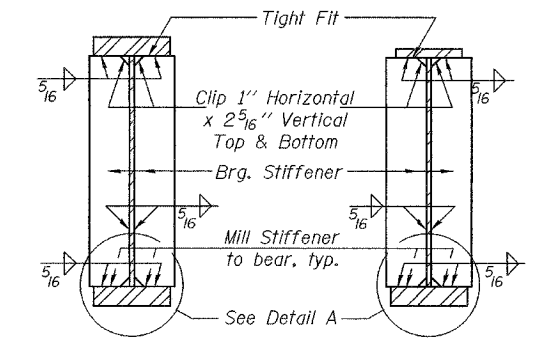
GIRDER ELEVATION



DETAIL B



DETAIL A



SECTION AT PIER

SECTION AT ABUTMENT

STRUCTURAL STEEL DETAILS
F.A.I. RT. 80 - SEC. (50-2)HBR
LaSALLE COUNTY
STATION 62+39.22
STRUCTURE NO. 050-0230

DESIGNED	CME
CHECKED	RLM
DRAWN	h.t. parsons
CHECKED	CME/RLM

Nov. 29, 2004
EXAMINED *Thomas J. Romagallo*
ENGINEER OF BRIDGE DESIGN
PASSED *Ralph E. Anderson*
ENGINEER OF BRIDGES AND STRUCTURES