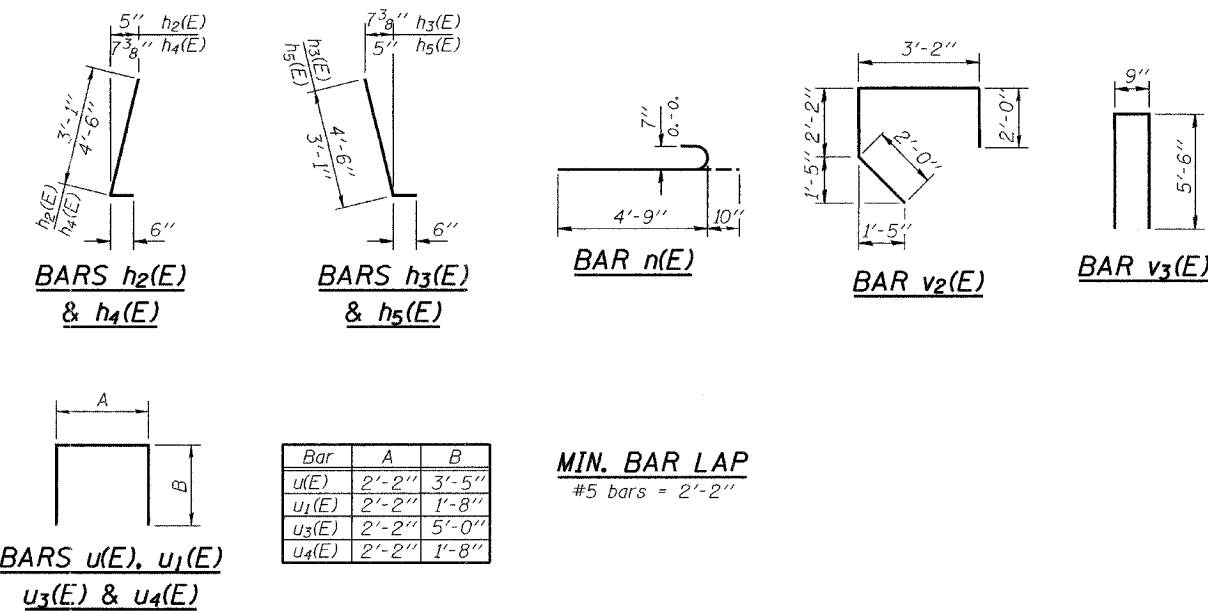
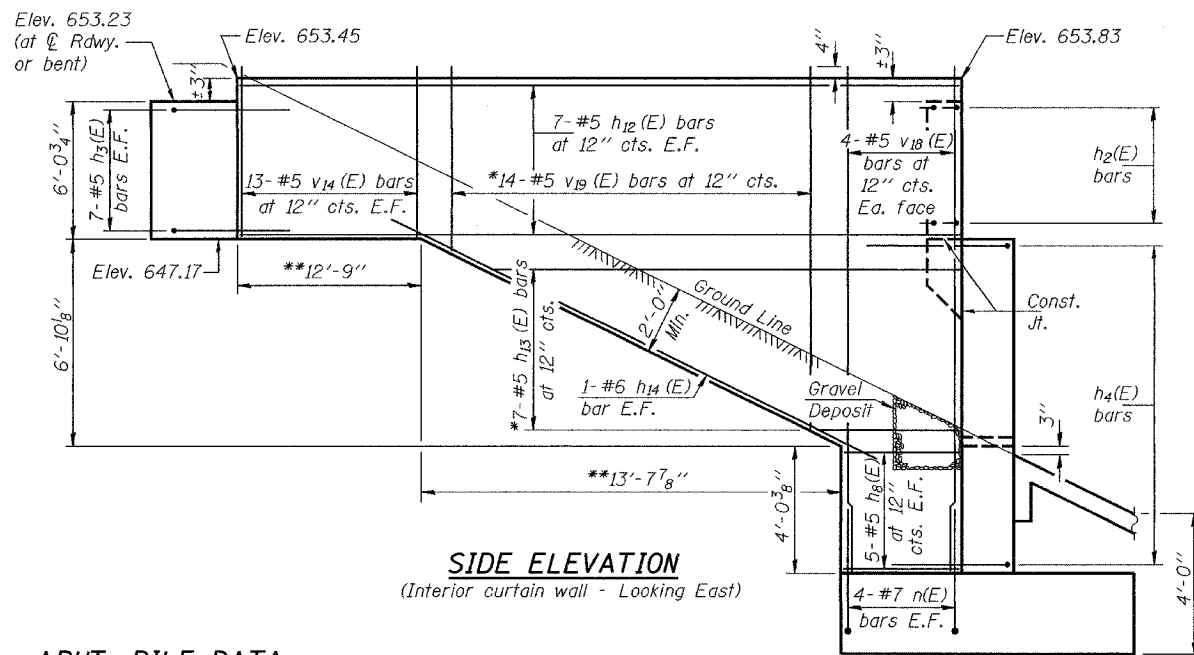
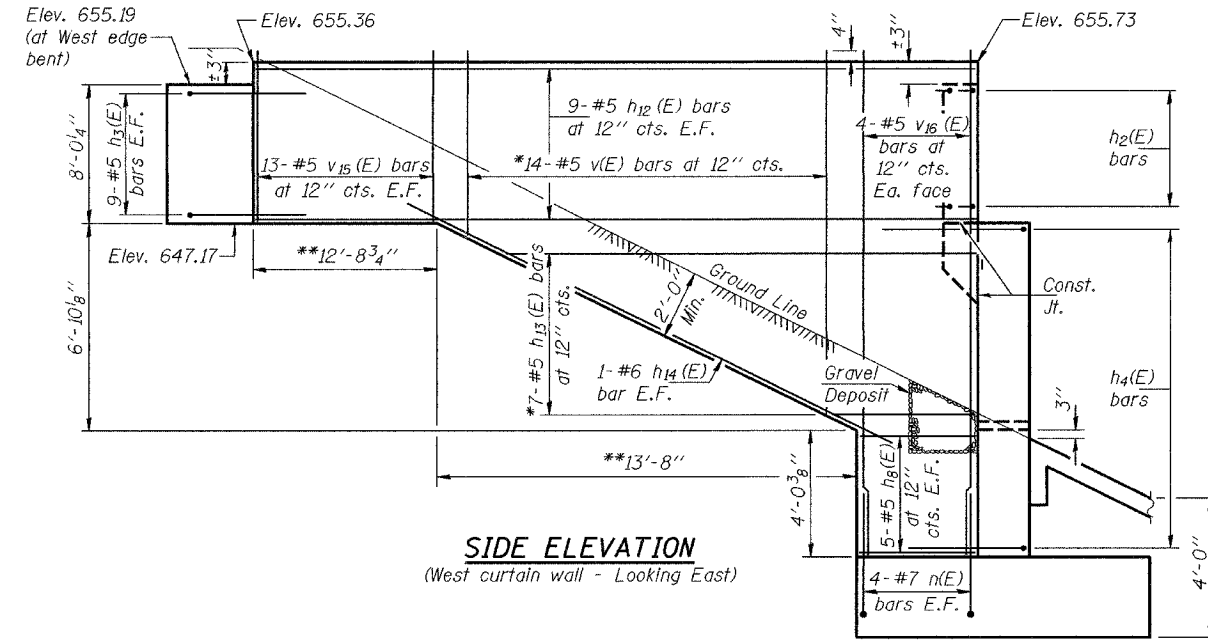
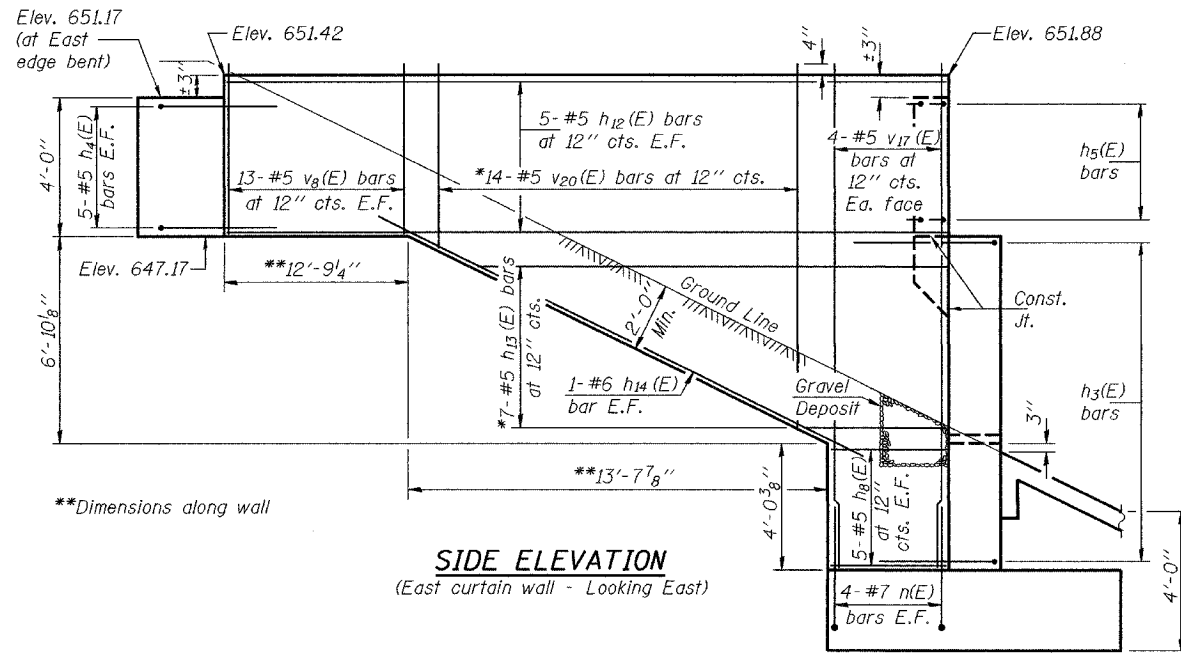


STATE OF ILLINOIS
DEPARTMENT OF TRANSPORTATION

ROUTE NO.	SECTION	COUNTY	SHEET	SHEET NO. 29
F.A.I. 80	(50-2)	LaSALLE	171	35 SHEETS
FED. ROAD DIST. NO. 7	ILLINOIS	FED. AID PROJECT-	Contract No. 86603	

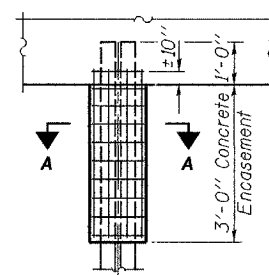
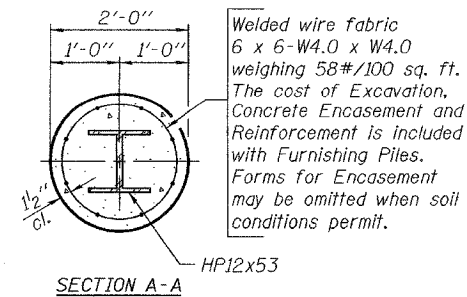


ABUT.-PILE DATA

Type: HP12x53
Capacity: Driven to refusal
Est. Length: 48'
No. Req'd.: 19 + 1 test pile

APPR. BENT-PILE DATA

Type: HP12x53
Capacity: Driven to refusal
Est. Length: 60'
No. Req'd.: 8



FIELD CUTTING DIAGRAM

* Order $h_{13}(E)$, $v(E)$, $v_{19}(E)$ & $v_{20}(E)$ bars full length. Cut to fit as shown and use remainder of bars in other face.

	$v_{20}(E)$	$v_{19}(E)$	$v(E)$	$h_{13}(E)$
a	4'-11"	6'-11"	8'-8"	3'-3"
b	11'-7"	13'-7"	15'-4"	16'-5"
c	16'-6"	20'-6"	24'-0"	19'-8"
d	14	14	14	7

BILL OF MATERIAL

Bar	No.	Size	Length	Shape
$h_1(E)$	48	#6	26'-5"	—
$h_2(E)$	14	#5	24'-5"	—
$h_3(E)$	28	#5	3'-7"	L
$h_4(E)$	58	#5	5'-0"	L
$h_5(E)$	62	#5	5'-0"	L
$h_6(E)$	8	#5	3'-7"	L
$h_7(E)$	30	#5	2'-9"	—
$h_8(E)$	14	#5	25'-6"	—
$h_9(E)$	8	#5	26'-5"	—
$h_{10}(E)$	42	#5	29'-2"	—
$h_{11}(E)$	21	#5	19'-8"	—
$h_{12}(E)$	6	#6	16'-4"	—
$h_{13}(E)$	6	#5	8'-7"	—
$h_{14}(E)$	3	#5	5'-4"	—
$h_{15}(E)$	3	#5	6'-11"	—
$h_{16}(E)$	3	#5	19'-4"	—
$h_{17}(E)$	3	#5	13'-11"	—
$h_{18}(E)$	3	#5	26'-3"	—
$n(E)$	200	#7	5'-7"	—
$p(E)$	34	#7	26'-5"	—
$r(E)$	86	#7	8'-2"	—
$t_1(E)$	58	#6	8'-2"	—
$v(E)$	14	#5	24'-0"	—
$v_1(E)$	52	#5	4'-8"	—
$v_2(E)$	56	#5	9'-4"	—
$v_3(E)$	53	#5	11'-9"	—
$v_4(E)$	165	#5	2'-3"	—
$v_5(E)$	26	#5	4'-8"	—
$v_6(E)$	26	#5	6'-8"	—
$v_7(E)$	26	#5	8'-7"	—
$v_8(E)$	8	#5	19'-6"	—
$v_9(E)$	8	#5	15'-10"	—
$v_{10}(E)$	8	#5	17'-9"	—
$v_{11}(E)$	14	#5	20'-6"	—
$v_{12}(E)$	14	#5	16'-6"	—
$v_{13}(E)$	54	#5	6'-9"	—
$v_{14}(E)$	176	#6	11'-7"	—
$u(E)$	18	#5	9'-0"	—
$u_1(E)$	42	#5	5'-6"	—
$u_2(E)$	86	#5	12'-2"	—
$u_3(E)$	42	#4	5'-6"	—
$w(E)$	68	#5	15'-1"	—
Concrete Structures	Cu. Yd.	178.0		
Reinforcement Bars, Epoxy Coated	Pound	21980		
Furnishing Steel Piles HP12x53	Foot	1392		
Driving Steel Piles HP12x53	Foot	1392		
Test Pile Steel HP12x53	Each	1		
Structure Excavation	Cu. Yd.	166.3		
Sand Backfill	Cu. Yd.	278.1		

NORTH ABUTMENT DETAILS
F.A.I. RT. 80 - SEC. (50-2)HBR
LaSALLE COUNTY
STATION 62+39.22
STRUCTURE NO. 050-0230

DESIGNED	RLM
CHECKED	CME
DRAWN	h.t. parsons
CHECKED	RLM/CME

Nov. 29, 2004
EXAMINED *Thomas J. Damagala*
PASSED *Ralph E. Anderson*
ENGINEER OF BRIDGE DESIGN
ENGINEER OF BRIDGES AND STRUCTURES

PILE ENCASEMENT DETAIL