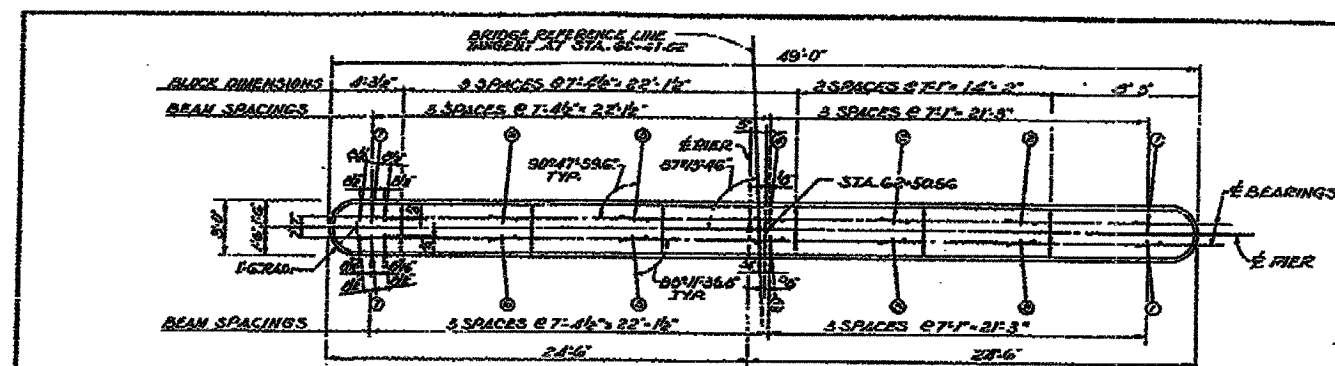
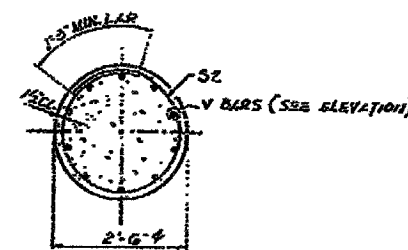


F.A. DIST.	SECTION	COUNTY	TOTAL SHEETS	SHEET NO.
80	(50-2)HBR	LA SALLE	460	186
STA.	TO STA.			
FED. ROAD DIST. NO.	ILLINOIS	FED. AID PROJECT		

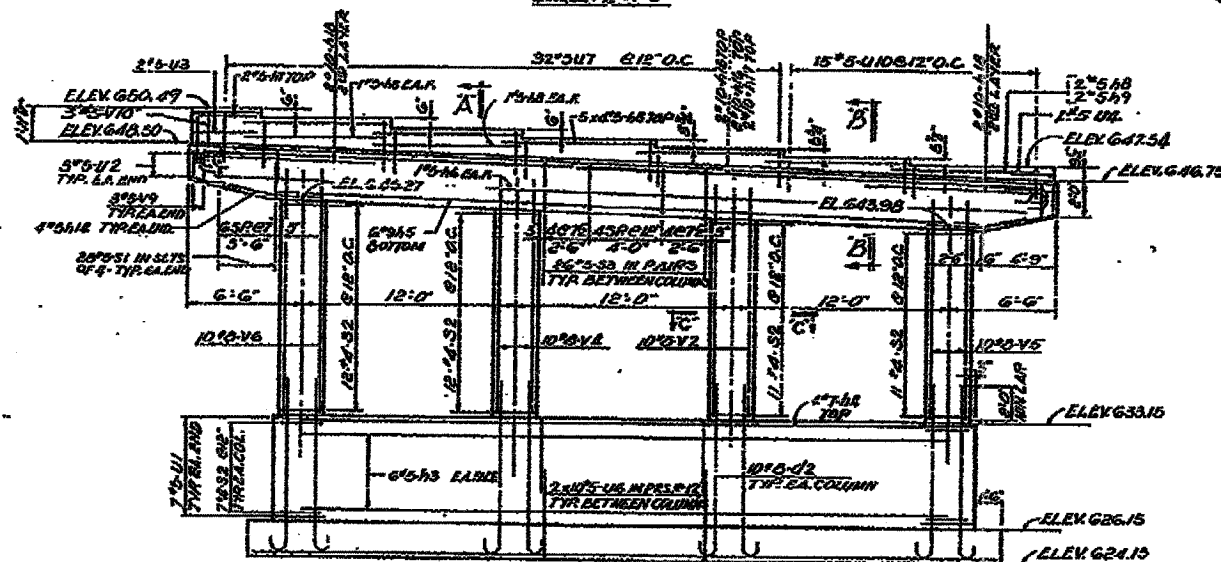
CONTRACT NO. 86603



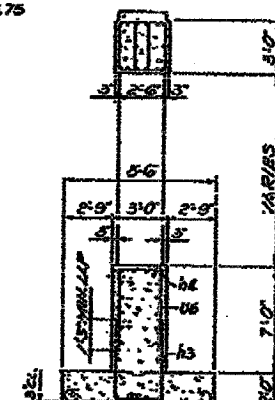
TOP PLAN
SCALE: 1/4" = 1'-0"



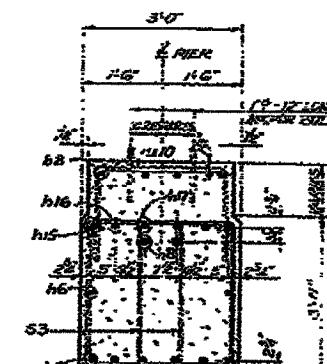
SECTION C-C
SCALE: 3/4" = 1'-0"



ELEVATION A-A
SCALE: 1/4" = 1'-0"



SECTION A-A
SCALE: 1/4" = 1'-0"



SECTION B-B
SCALE: 1/4" = 1'-0"

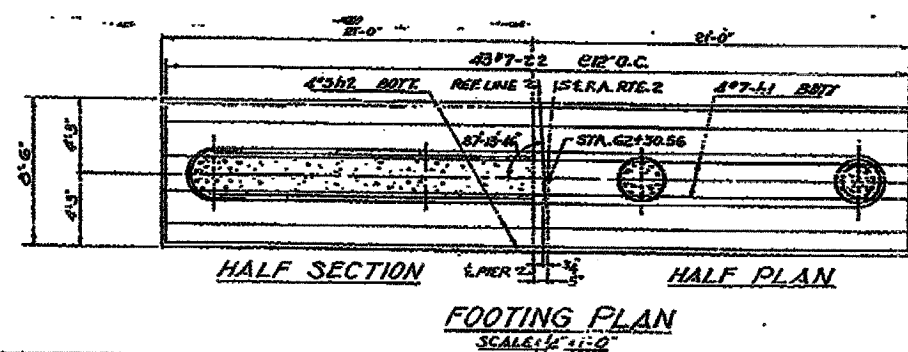
NOTE:
PIEDestal STEPS TO BE CURVED MONOLITHICALLY WITH TOP BEAM.
SPACE REINFORCEMENT TO 1/2" O.C. INTERSPACE WITH DRILLING OF HOLES FOR ANCHOR BOLTS.

BILL OF MATERIAL

ITEM	UNIT	QUANTITY
CLASS X CONCRETE	CU. YD.	86.5
REINFORCEMENT BARS	PRND	1380
CLASS 2A EXCAVATION	CU. YD.	140

PIER 2
GRADE SEPARATION
P.A. ROUTE 80, ST. JAMES & AVENUE
OVER RAG ROUTE 80
LA PROJECT
TAL. ROUTE 80 SECTION 502-02
LA SALLE COUNTY
STA. 65+57.62

ALFRED BENESCH & ASSOCIATES CONSULTING ENGINEERS
10 SOUTH WASHINGTON AVENUE 705 CHICAGO, ILLINOIS



HALF SECTION HALF PLAN
FOOTING PLAN
SCALE: 1/4" = 1'-0"