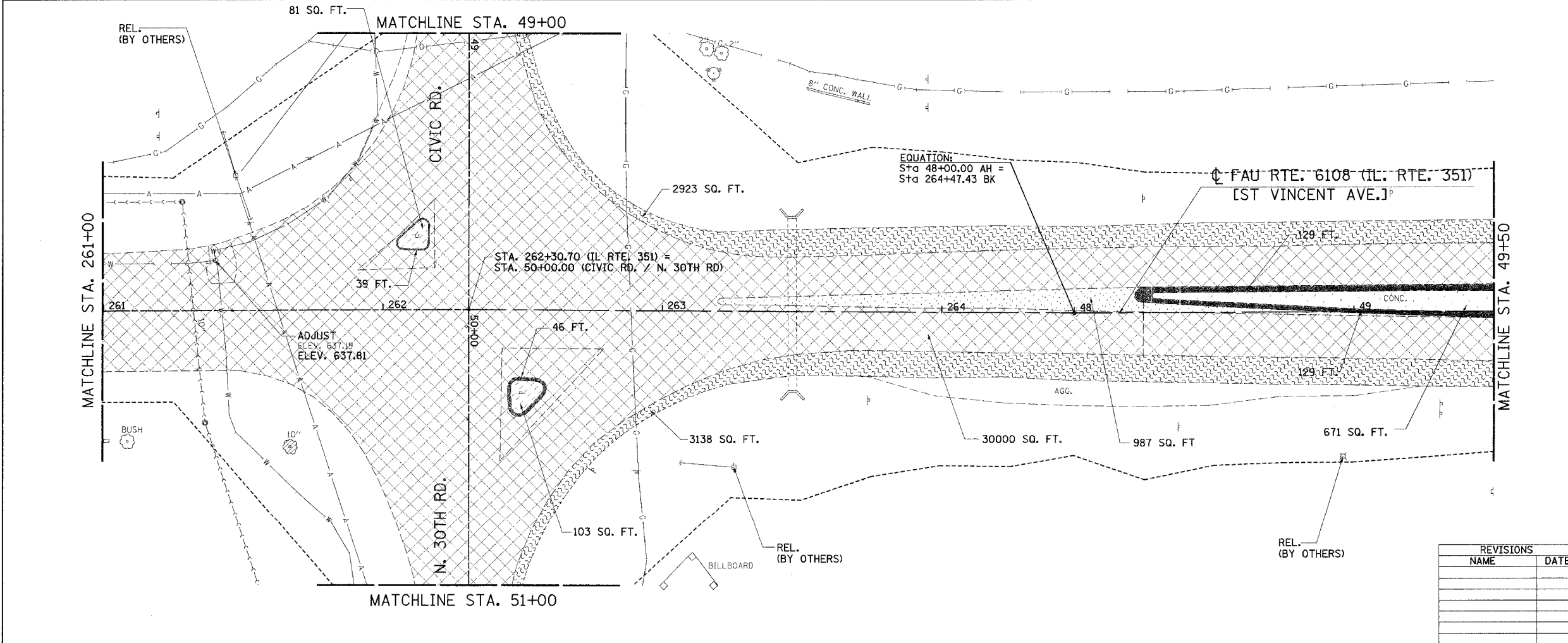
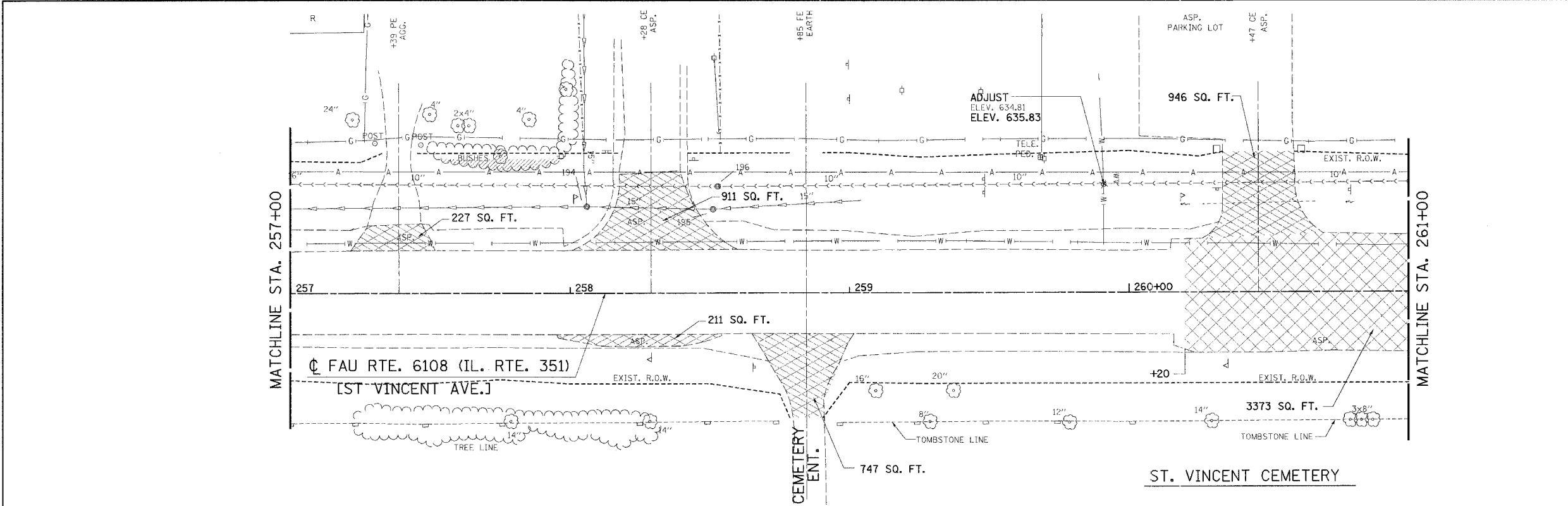


DESIGN		
INT. DATE	REASON	

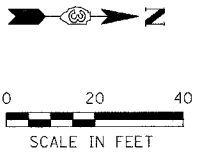
PLOTS & CHECKS		
INT. DATE	NO.	REASON

FILE NAME = \$FILE\$
 PLOT SCALE = \$PLOTSCALE\$
 PLOT TIME = \$PLOTTIME\$
 OPERATOR = \$OPERATOR\$

CHECKS		
INT. DATE	REASON	



F.A.U. RTE.	SECTION	COUNTY	TOTAL SHEETS	SHEET NO.
6108	(70XN & TS-1)	LASALLE	460	240
STA. 257+00 TO STA. 49+50		ILLINOIS FED. AID PROJECT		
CONTRACT NO. 86603				



LEGEND	
CURB AND GUTTER REMOVAL	[Hatched pattern]
SIDEWALK REMOVAL	[Cross-hatched pattern]
DRIVEWAY REMOVAL	[Diagonal hatched pattern]
SURFACE REMOVAL & BUTT JOINT	[Diagonal hatched pattern]
PAVEMENT REMOVAL	[Cross-hatched pattern]
CONCRETE MEDIAN SURFACE REMOVAL	[Diagonal hatched pattern]
BITUMINOUS SHOULDER REMOVAL	[Stippled pattern]
BRIDGE APPROACH PAVEMENT REMOVAL	[Diagonal hatched pattern]
TREE REMOVAL	[Tree symbol]
TO BE RELOCATED	[REL symbol]

ILLINOIS DEPARTMENT OF TRANSPORTATION
REMOVAL AND ADJUSTMENT PLAN

FAU 6108 (IL. RTE. 351)
 SECTION (70XN & TS-1)
 LASALLE COUNTY

SCALE: VERT. HORIZ. DATE: 06/30/03	DRAWN BY: MABUS DESIGNED BY: BOTT CHECKED BY: COLBROOK
GREENE & BRADFORD, INC. OF SPRINGFIELD	COMPUTER FILE NO. REMOVAL351I-01
PROJECT: 01194_B.N	08/05/04-CSJ

REVISIONS	
NAME	DATE