

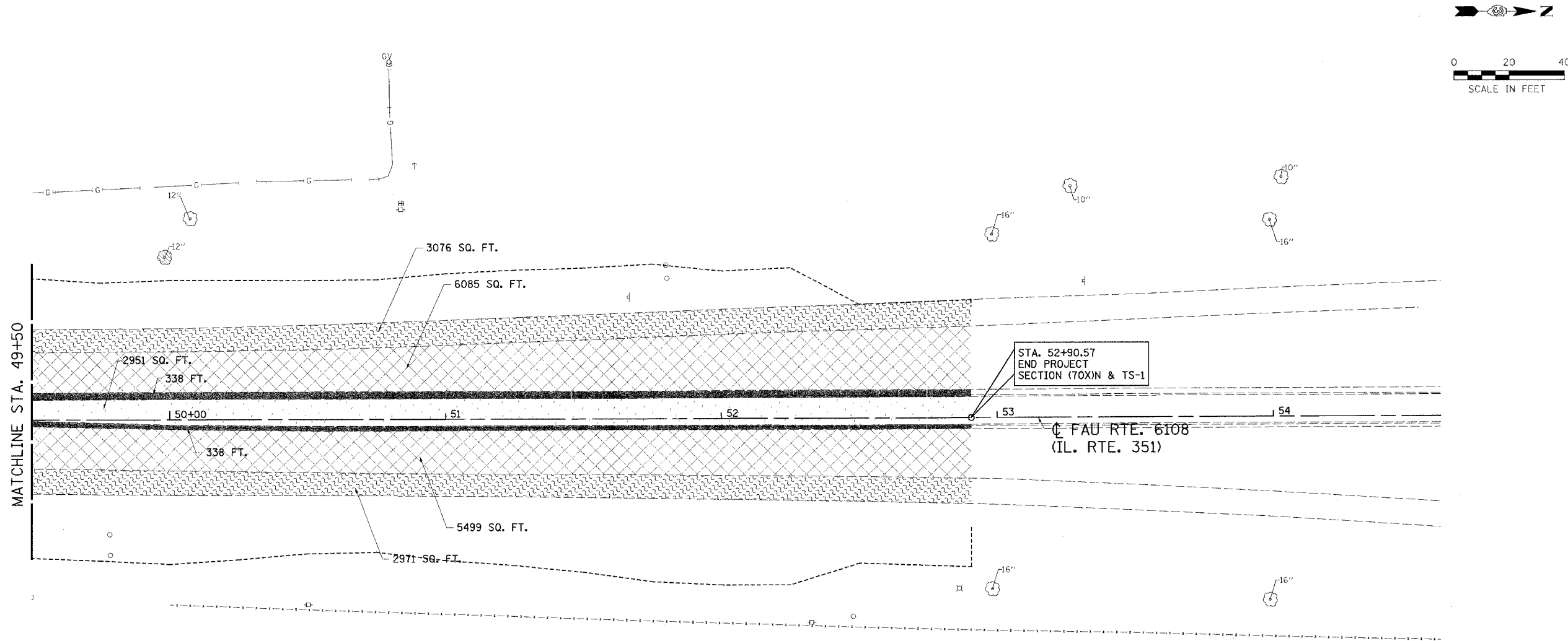
DESIGN		
INT.	DATE	REASON

FAU RTE.	SECTION	COUNTY	TOTAL SHEETS	SHEET NO.
6108	(70X)N & TS-1	LA SALLE	46	241
STA. 49+50		TO STA. 54+00		
FED. ROAD DIST. NO.	ILLINOIS	FED. AID PROJECT		
CONTRACT NO. 86603				

PLOTS & CHECKS		
INT.	DATE	REASON

FILE NAME = \$FILE\$  
 PLOT SCALE = \$PSCALE\$  
 PLOT DATE = \$DATE\$  
 OPERATOR = \$USER\$

CHECKS		
INT.	DATE	REASON



STA. 52+90.57  
 END PROJECT  
 SECTION (70X)N & TS-1

FAU RTE. 6108  
 (IL. RTE. 351)

LEGEND	
CURB AND GUTTER REMOVAL	
SIDEWALK REMOVAL	
DRIVEWAY REMOVAL	
SURFACE REMOVAL & BUTT JOINT	
PAVEMENT REMOVAL	
CONCRETE MEDIAN SURFACE REMOVAL	
BITUMINOUS SHOULDER REMOVAL	
BRIDGE APPROACH PAVEMENT REMOVAL	
TREE REMOVAL	
TO BE RELOCATED	REL

REVISIONS	
NAME	DATE

ILLINOIS DEPARTMENT OF TRANSPORTATION  
**REMOVAL AND ADJUSTMENT PLAN**

FAU 6108 (IL. RTE. 351)  
 SECTION (70X)N & TS-1  
 LASALLE COUNTY

SCALE: VERT. \_\_\_\_\_  
 HORIZ. \_\_\_\_\_  
 DATE: 06/30/03

DRAWN BY: MABUS  
 DESIGNED BY: BOTT  
 CHECKED BY: COLBROOK

GREENE & BRADFORD, INC.  
 CIVIL ENGINEERS  
 1011 W. STATE ST., SUITE 200  
 SPRINGFIELD, ILL. 62761  
 (217) 244-1234 FAX (217) 244-1235  
 www.greenebro.com

COMPUTER FILE NO.  
 REMOVAL3511-02  
 PROJECT: 01194\_B\_N  
 08/05/04-GSJ