

DESIGN		
INT.	DATE	REASON

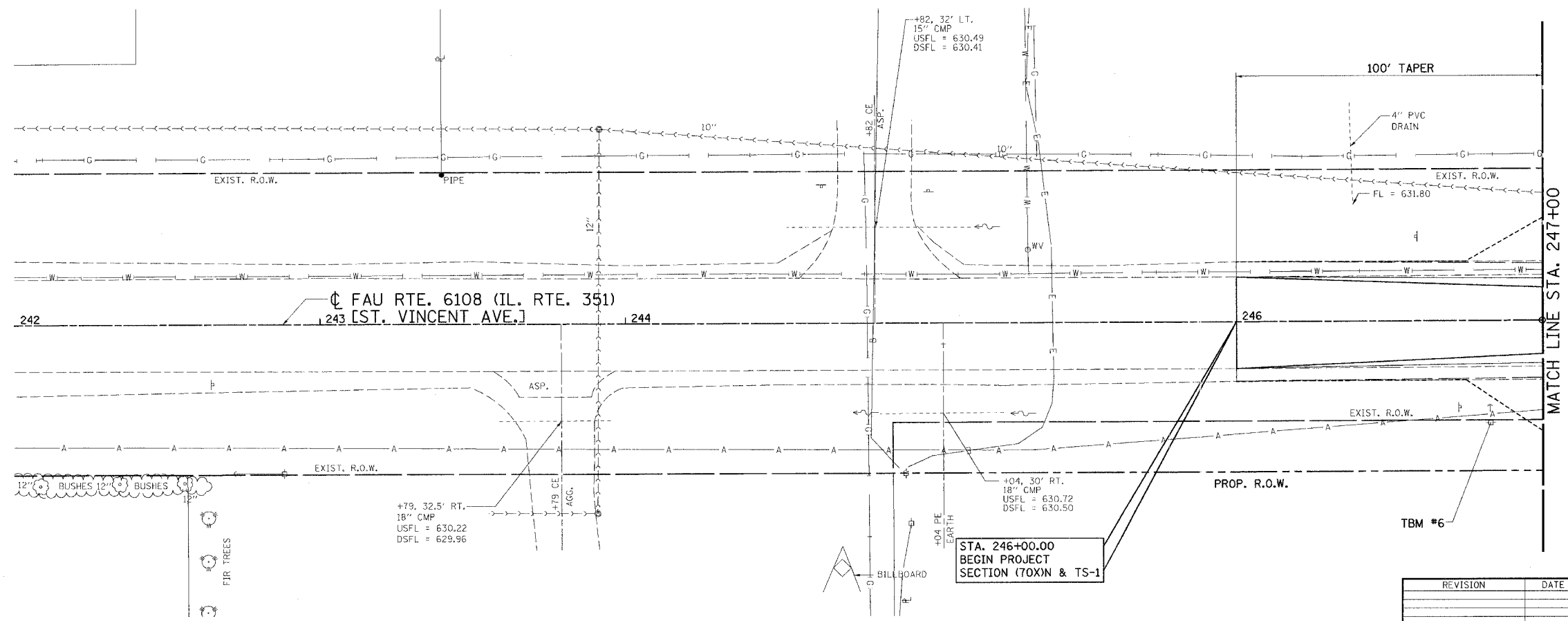
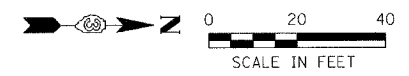
PLANS & CHECKS		
INT.	DATE	REASON

CHECKS		
INT.	DATE	REASON

PROFILE		
INT.	DATE	REASON

CHECKS		
INT.	DATE	REASON

F.A.U. RTE.	SECTION	COUNTY	TOTAL SHEETS	SHEET NO.
6108	(70X)N & TS-1	LA SALLE	466	244
STA. 242+00		TO STA. 247+00		
FED. ROAD DIST. NO.	ILLINOIS	FED. AID PROJECT		
CONTRACT NO. 86603				

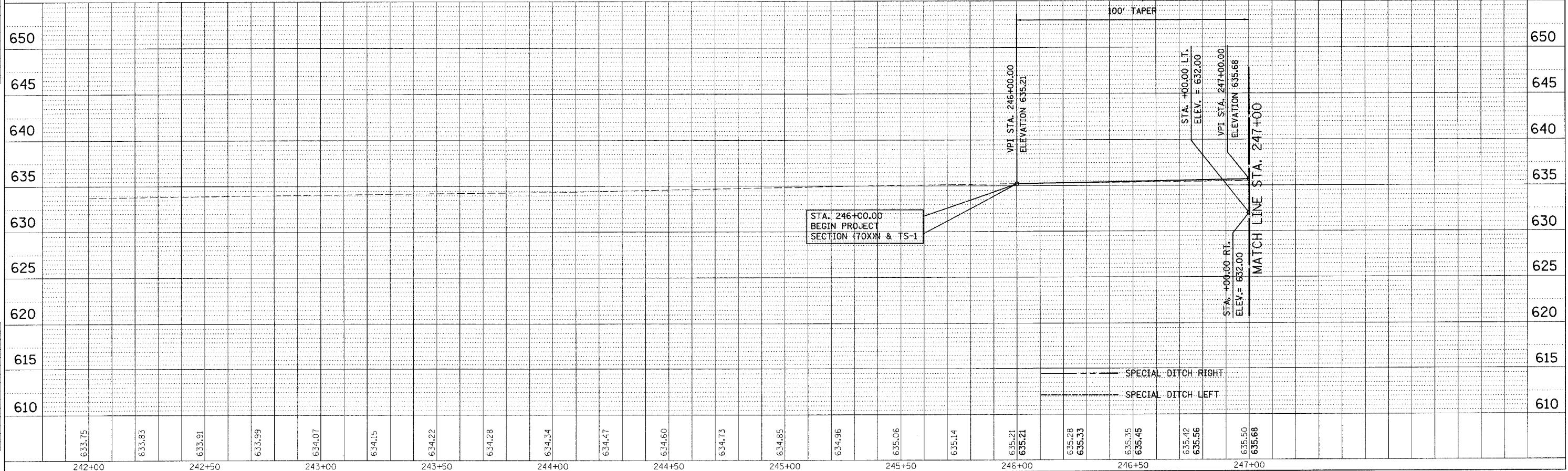


TBM #6: RAILROAD SPIKE IN POWER POLE  
 STA. 246+83, 34' RT.  
 ELEV. 633.90

REVISION	DATE	BY

**GREENE & BRADFORD, INC.**  
 OF SPRINGFIELD  
 CONSULTING ENGINEERS  
 1001 S. GARDNER ST., SPRINGFIELD, ILL. 62761  
 (618) 233-8844 FAX (618) 233-8845  
 WWW.GREENE-AND-BRADFORD.COM

COMPUTER FILE NO.  
 PLN351H-02  
 PROJECT: 01194.B.N  
 04/01/04-RPB



100TEPP - 1st 8/25/98

FAU RTE. 6108 (IL. RTE. 351) LA SALLE CO.