

DESIGN		
INT.	DATE	REASON

PLAN		
NO.	DATE	REASON

CHECKS		
INT.	DATE	REASON

PROFILE		
NO.	DATE	REASON

CHECKS		
INT.	DATE	REASON

TBM #1: RAILROAD SPIKE IN POWER POLE
STA. 261+47, 49' LT.
ELEV. 638.08

2 CENTERED CURVE
60' - 400'
17.4' OFFSET

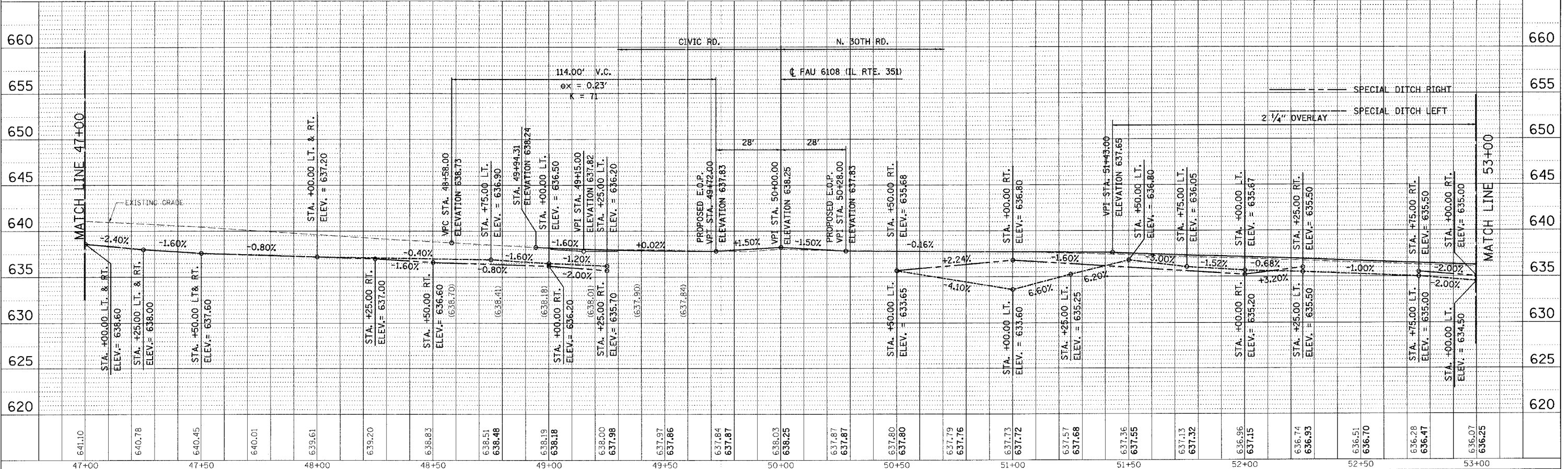
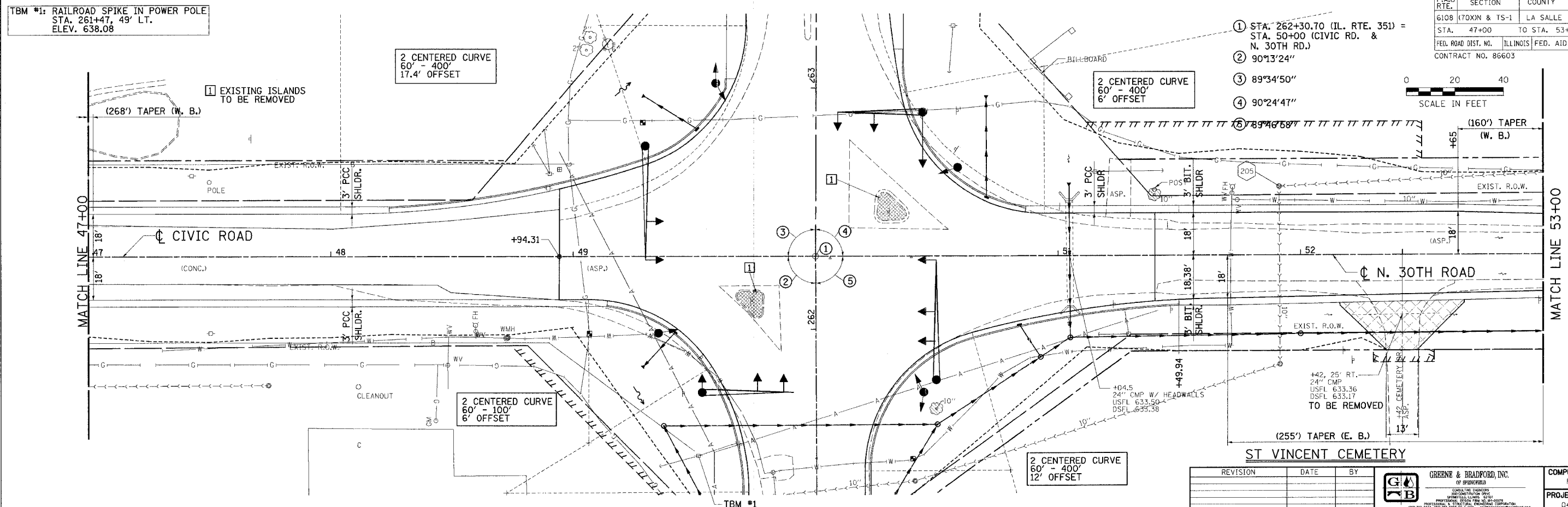
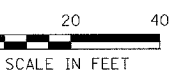
2 CENTERED CURVE
60' - 400'
6' OFFSET

2 CENTERED CURVE
60' - 100'
6' OFFSET

2 CENTERED CURVE
60' - 400'
12' OFFSET

- ① STA. 262+30.70 (IL. RTE. 351) = STA. 50+00 (CIVIC RD. & N. 30TH RD.)
- ② 90°13'24"
- ③ 89°34'50"
- ④ 90°24'47"

F.A.U. RTE.	SECTION	COUNTY	TOTAL SHEETS	SHEET NO.
6108	(70XN & TS-1)	LA SALLE	460	251



REVISION	DATE	BY



COMPUTER FILE NO.
PLN351J-02