

F.A.U. RTE.	SECTION	COUNTY	TOTAL SHEETS	SHEET NO.
6108	(70XN & TS-1)	LASALLE	460	363
STA. 252+00		TO STA. 257+00		
FED. ROAD DIST. NO.		ILLINOIS	FED. AID PROJECT	
CONTRACT NO. 86603				

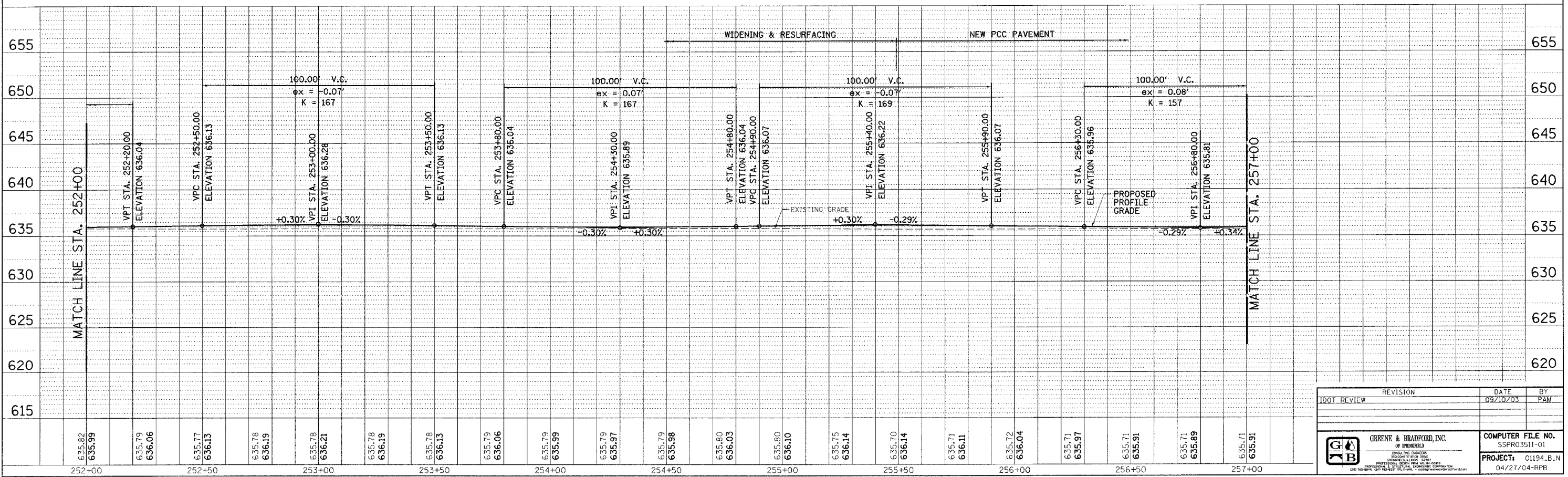
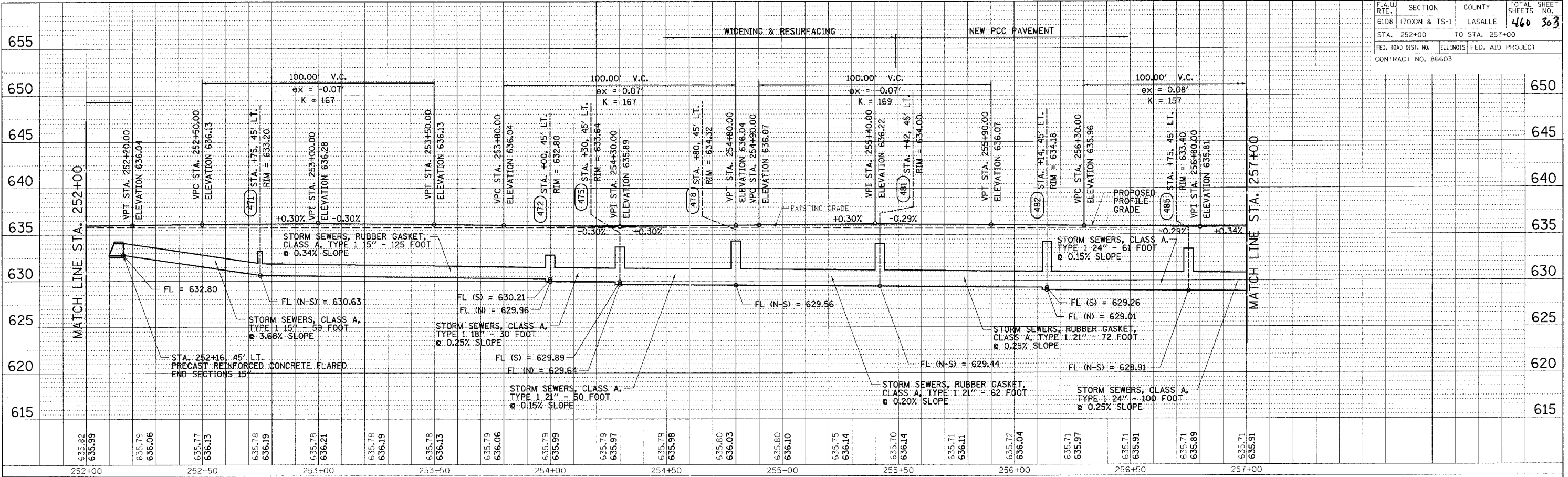
DESIGN		
INT.	DATE	REASON

PLAN		
SURVEYED	BY	DATE
ALLOWABLE CHECKED BY		
NOTE BOOK NO.		
FIELD FILE NAME		

PLOTS & CHECKS			
INT.	DATE	NO.	REASON

PROFILE		
SURVEYED	BY	DATE
GRADES CHECKED BY		
STRUCTURE NOTATIONS CHECKED BY		
NOTE BOOK NO.		

CHECKS		
INT.	DATE	REASON



100TPP-20 - 1:20 8/07/00

RIGHT PROFILE

DRAINAGE & UTILITIES - FAU 6108 (IL. RTE. 351) LASALLE COUNTY

REVISION		DATE	BY
		09/10/03	PAM

	<b>GREENE &amp; BRADFORD, INC.</b> <small>OF SPRINGFIELD</small> <small>REGISTERED PROFESSIONAL ENGINEERS</small> <small>ILLINOIS LICENSE NO. 0217-0001</small> <small>REGISTERED PROFESSIONAL SURVEYORS</small> <small>ILLINOIS LICENSE NO. 0217-0001</small>	<b>COMPUTER FILE NO.</b> SSPRO3511-01 <b>PROJECT:</b> 01194.B.N 04/21/04-RPB
--	---	---