

DESIGN		
INT.	DATE	REASON

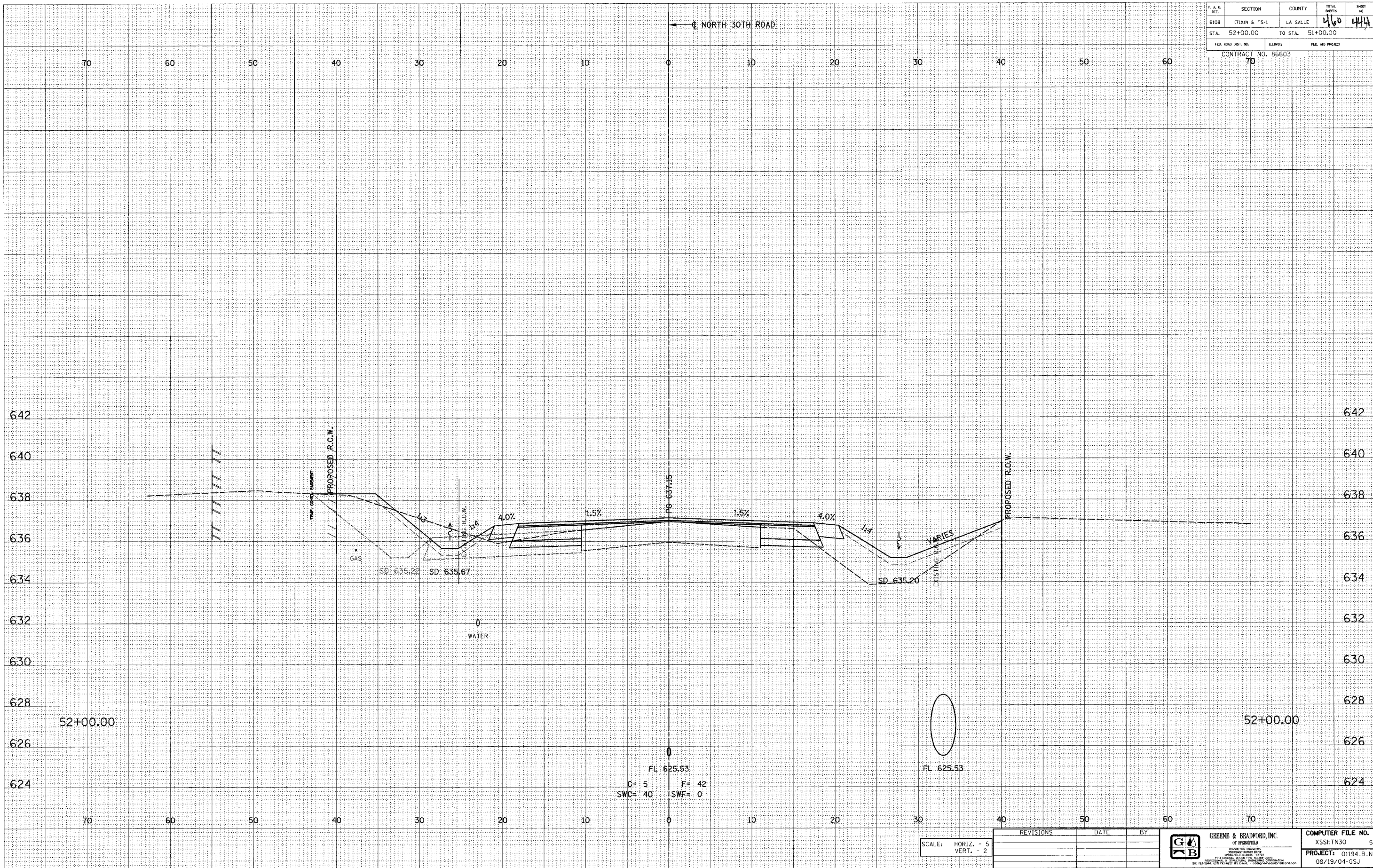
BY	DATE

PLOTS & CHECKS			
INT.	DATE	NO.	REASON

BY	DATE

CHECKS		
INT.	DATE	REASON

LA SALLE	SECTION	COUNTY	TOTAL SHEETS	SHEET NO.
6108	171XN & TS-1	LA SALLE	440	444
STA. 52+00.00		TO STA. 51+00.00		
FED. ROAD DIST. NO.			FED. AID PROJECT	
CONTRACT NO. 86603				
70				



E-XSEC 1:1 8/25/98

SCALE: HORIZ. - 5
VERT. - 2

REVISIONS	DATE	BY

GREZNE & BRADFORD, INC.
 OF SEWING
 4000 W. 10TH ST. SUITE 100
 SEWING, MO. 64086
 (417) 524-1111
 FAX: (417) 524-1112
 WWW.GREZNEBRADFORD.COM

COMPUTER FILE NO.
 XSSHTN30 5
PROJECT: 01194.B.N
 08/19/04-GSJ

NORTH 30TH ROAD - LA SALLE CO.