

TREE REMOVAL				
LOCATION	6 TO 15 UNITS		OVER 15 UNITS	
	①	②	①	②
FUNDING TYPE				
STA. -1+08.61, 34.85' RT.	---	6	---	---
STA. 1+39.60, 38.75' RT.	---	8	---	---
STA. 4+67.70, 36.23' RT.	---	12	---	---
STA. 4+78.50, 29.73' RT.	---	8	---	---
STA. 5+34.60, 45.73' RT.	---	10	---	---
STA. 5+40.40, 46.50' RT.	---	6	---	---
STA. 5+47.90, 56.20' RT.	---	6	---	---
STA. 5+56.70, 49.34' RT.	---	8	---	---
STA. 5+56.40, 46.10' RT.	---	12	---	---
STA. 5+68.30, 43.17' RT.	---	12	---	---
STA. 5+88.30, 41.91' LT.	---	6	---	---
STA. 5+78.00, 47.11' RT.	---	10	---	---
STA. 5+89.10, 43.74' LT.	---	6	---	---
STA. 5+91.60, 48.11' RT.	---	12	---	---
STA. 5+96.00, 53.68' RT.	---	8	---	---
STA. 6+06.00, 53.98' RT.	---	12	---	---
STA. 6+07.40, 43.42' RT.	---	6	---	---
STA. 6+20.80, 42.50' RT.	---	8	---	---
STA. 6+25.10, 47.28' RT.	---	8	---	---
STA. 6+25.60, 40.89' LT.	---	12	---	---
STA. 6+27.10, 37.59' LT.	---	12	---	---
STA. 6+30.20, 44.55' RT.	---	6	---	---
STA. 6+38.40, 39.63' LT.	---	8	---	---
STA. 6+43.70, 42.22' RT.	---	6	---	---
STA. 6+49.80, 44.78' RT.	---	6	---	---
STA. 6+55.70, 47.48' RT.	---	8	---	---
STA. 6+72.20, 35.47' LT.	---	10	---	---
STA. 6+75.00, 37.16' LT.	---	6	---	---
STA. 6+92.40, 38.83' LT.	---	6	---	---
STA. 6+97.30, 49.04' RT.	---	12	---	---
STA. 7+10.60, 35.22' LT.	---	10	---	---
STA. 7+12.30, 40.42' RT.	---	8	---	---
STA. 7+24.30, 35.16' LT.	---	8	---	---
STA. 7+27.90, 33.66' LT.	---	10	---	---
STA. 7+29.80, 43.32' RT.	---	6	---	---
STA. 7+31.30, 37.03' LT.	---	6	---	---
STA. 7+33.30, 35.91' RT.	---	8	---	---
STA. 7+39.50, 38.27' RT.	---	8	---	---
STA. 7+53.50, 41.17' RT.	---	10	---	---
STA. 7+72.90, 41.20' RT.	---	12	---	---
STA. 7+74.60, 34.36' LT.	---	12	---	---
STA. 7+75.10, 50.38' RT.	---	6	---	---
STA. 8+03.80, 48.27' RT.	---	6	---	---
STA. 8+12.20, 36.31' LT.	---	6	---	---
STA. 8+48.80, 38.16' RT.	---	6	---	---
STA. 8+90.90, 32.95' LT.	---	8	---	---
STA. 9+05.1, 33.2' LT.	---	---	24	---
STA. 9+29.5, 34.1' LT.	---	8	---	---
STA. 9+99.5, 34.7' LT.	---	---	36	---
STA. 18+15.0, 23.0' RT.	---	---	20	---
STA. 22+04.0, 31.0' LT.	---	---	39	---
STA. 22+15.0, 23.0' LT.	---	---	20	---
STA. 22+28.0, 6.0' RT.	---	---	30	---
STA. 22+36.0, 37.0' RT.	8	---	---	---
STA. 22+86.0, 23.0' RT.	---	---	16	---
STA. 23+08.0, 57.0' RT.	12	---	---	---
STA. 23+13.0, 0.4' LT.	14	---	---	---
STA. 23+26.0, 53.0' RT.	12	---	---	---
STA. 23+36.0, 12.0' RT.	14	---	---	---
STA. 23+89.0, 37.0' RT.	12	---	---	---
STA. 24+27.0, 50.0' RT.	---	---	16	---
STA. 24+31.0, 66.0' LT.	---	---	2@28	---
STA. 24+34.0, 68.0' RT.	14	---	---	---
STA. 24+41.0, 37.0' RT.	13	---	---	---
STA. 24+69.0, 27.0' LT.	12	---	---	---
STA. 24+69.0, 42.0' LT.	8	---	---	---
SUBTOTALS	119	394	197	60
TOTAL		513		257

- ① BRRP AND MAJOR BRIDGE STA. 16+50 TO 25+75
- ② TARP, STU, AND MFT STA. -2+00 TO 16+50 AND STA. 25+75 TO 33+96.07

TEMPORARY DITCH CHECK		
LOCATION	EACH	
	①	②
FUNDING TYPE		
STA. 1+25 LT. & RT.	---	2
STA. 3+00 LT. & RT.	---	2
STA. 7+00 LT. & RT.	---	2
STA. 9+00 LT. & RT.	---	2
STA. 9+75 LT. & RT.	---	2
STA. 10+50 LT. & RT.	---	2
STA. 11+30 LT. & RT.	---	2
STA. 12+00 RT.	---	1
STA. 22+00 RT.	1	---
STA. 23+50 RT.	1	---
STA. 27+00 LT.	---	1
STA. 498+85 LT.	---	1
TOTAL	2	17

- ① BRRP AND MAJOR BRIDGE STA. 16+50 TO 25+75
- ② TARP, STU, AND MFT STA. -2+00 TO 16+50 AND STA. 25+75 TO 33+96.07

PERIMETER EROSION BARRIER		
LOCATION	FOOT	
	①	②
FUNDING TYPE		
STA. 12+50 TO 15+40 LT.		286
STA. 13+00 TO 14+50 RT.		135
STA. 23+50 TO 24+50 LT.	122	
STA. 27+50 TO 28+75 LT.		123
STA. 30+50 TO 33+25 LT.		277
STA. 498+45 TO 498+95 RT.		50
TOTAL	122	871

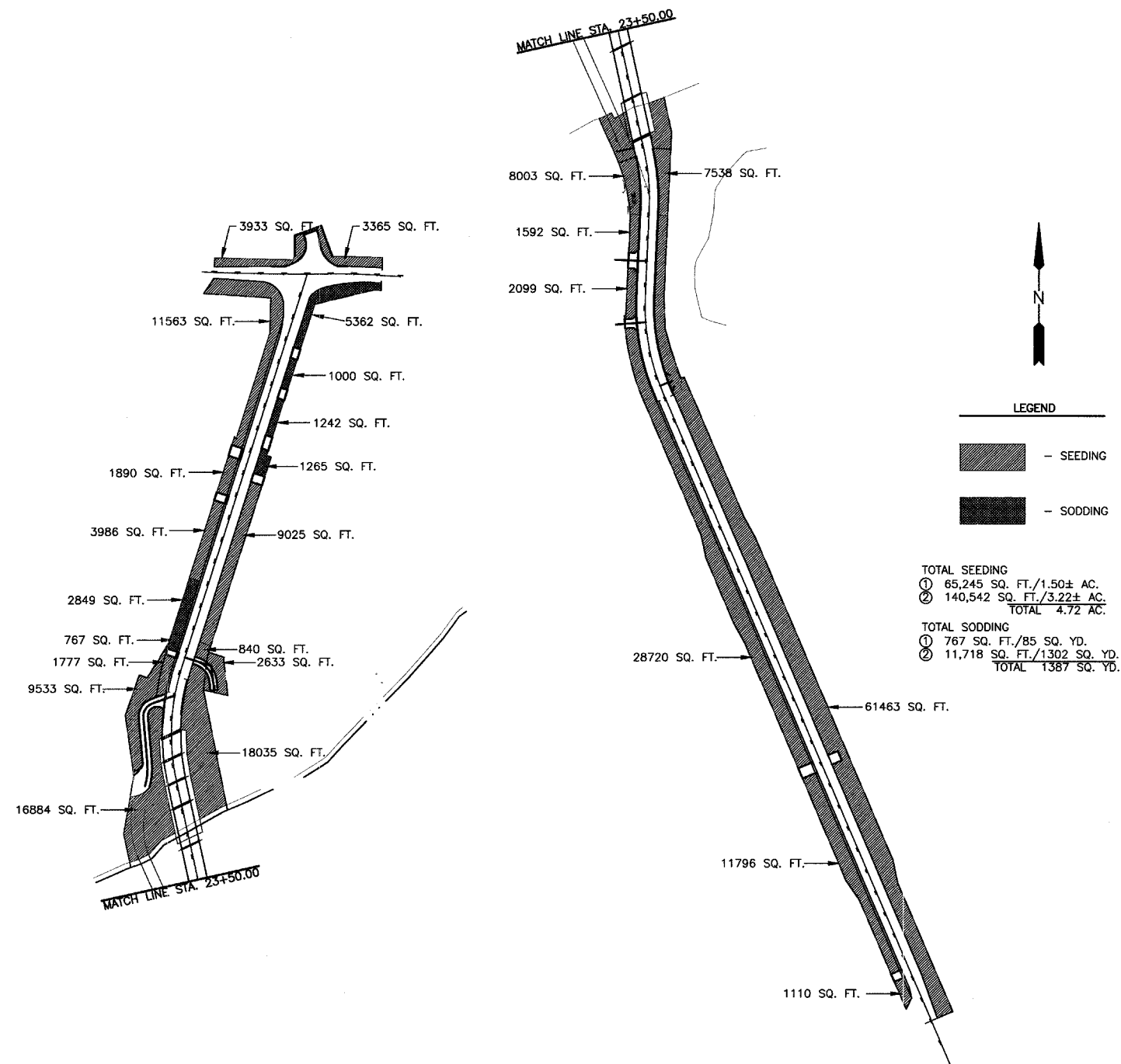
- ① BRRP AND MAJOR BRIDGE STA. 16+50 TO 25+75
- ② TARP, STU, AND MFT STA. -2+00 TO 16+50 AND STA. 25+75 TO 33+96.07

EROSION CONTROL BLANKET		
LOCATION	SQ YD	
	①	②
FUNDING TYPE		
STA. 14+50 TO 16+50 RT.		66
STA. 16+00 TO 16+50 LT.		33
STA. 16+50 TO 18+26 RT.	61	
STA. 16+50 TO 18+00 LT.	95	
TOTAL	156	99

- ① BRRP AND MAJOR BRIDGE STA. 16+50 TO 25+75
- ② TARP, STU, AND MFT STA. -2+00 TO 16+50 AND STA. 25+75 TO 33+96.07

INLET AND PIPE PROTECTION		
LOCATION	EACH	
	①	②
FUNDING TYPE		
STA. -2+08 RT.		1
STA. 3+70 LT.		1
STA. 12+10 LT.		1
STA. 12+45 RT.		1
STA. 14+00 RT.		1
STA. 16+00 LT. & RT.		2
STA. 18+00 LT.	1	
STA. 25+00 LT.	1	
STA. 25+50 LT. & RT.	2	
STA. 28+50 RT.		1
STA. 29+00 LT.		1
STA. 29+75 RT.		1
STA. 30+75 RT.		1
STA. 31+75 RT.		1
STA. 32+75 RT.		1
STA. 33+75 RT.		1
STA. 498+75 RT.		1
STA. 500+75 LT.		1
TOTAL	4	16

- ① BRRP AND MAJOR BRIDGE STA. 16+50 TO 25+75
- ② TARP, STU, AND MFT STA. -2+00 TO 16+50 AND STA. 25+75 TO 33+96.07



SEEDING & SODDING AREAS
N.T.S.

- ① BRRP AND MAJOR BRIDGE STA. 16+50 TO 25+75
- ② TARP, STU, AND MFT STA. -2+00 TO 16+50 AND STA. 25+75 TO 33+96.07

TOTAL SEEDING
 ① 65,245 SQ. FT./1.50± AC.
 ② 140,542 SQ. FT./3.22± AC.
 TOTAL 4.72 AC.

TOTAL SODDING
 ① 767 SQ. FT./85 SQ. YD.
 ② 11,718 SQ. FT./1302 SQ. YD.
 TOTAL 1387 SQ. YD.

DRAWN BY: AAR	CAD/DWG: QSCHD	REVISIONS	
CHECKED BY: JKC	DATE: 2/03	DATE	BY
		3/08/04	NET
		7/01/04	NET

CHAMLIN ASSOCIATES
PERU MORRIS ILLINOIS

FAS 259/COUNTY HIGHWAY 3 OVER FOX RIVER
SECTION 98-00545-00-BR
LASALLE COUNTY

SCHEDULE OF QUANTITIES

SCALE: NTS	SHEET 6
FILE NO.: 11174-01Y-1	OF 79