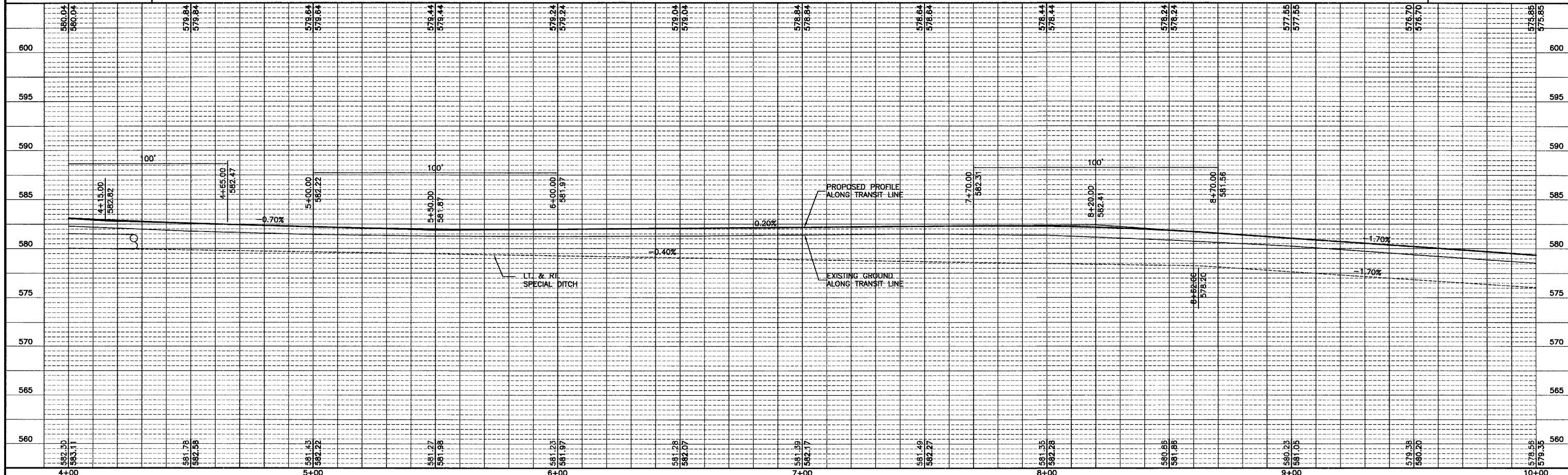


FIELD ENTRANCE  
BITUMINOUS SURFACE REMOVAL VARIABLE DEPTH  
(MILL AS NECESSARY TO PROVIDE 8" THICKNESS FOR PAVEMENT)

B.M. # 8 ELEV. 583.35  
RAILROAD SPIKE SET IN  
POWER POLE.  
STA. 3+68, 26' LT.

B.M. # 7 ELEV. 577.43  
RAILROAD SPIKE SET IN  
POWER POLE.  
STA. 11+27, 23' LT.



DRAWN BY: ARR  
CHECKED BY: JKC  
DATE: 3/03

REVISIONS	
DATE	BY
3/08/04	NET
6/29/04	NET

**CHAMLIN ASSOCIATES**  
PERU MORRIS  
ILLINOIS

FAS 259/COUNTY HIGHWAY 3 OVER FOX RIVER  
SECTION 98-00545-00-BR  
LASALLE COUNTY

PLAN AND PROFILE  
STA. 4+00.00 TO 10+00.00

SCALE: AS NOTED  
SHEET 10  
FILE NO.: 11174.01Y-1  
OF 79