

TRAFFIC BARRIER TERMINAL TYPE 6 AND TRAFFIC BARRIER TERMINAL TYPE 1 SPECIAL (TANGENT), EACH SIDE. (DUE TO PROXIMITY OF ENTRANCES ONLY THE END 21'-9" OF LEFT TYPE 1 TERMINALS SHALL BE CONSTRUCTED)

FOR FRONTAGE ROAD DETAILS SEE SHEET 16

R.O.W.
PIPE CULVERT, CLASS D, TYPE 1 15" 50 FOOT
US 30.5' LT. STA. 25+50.7, ELEV. 539.35
END SECTIONS 15" 1 EA.
TRENCH BACKFILL 2 CU. YD.

PIPE DRAINS 12" 27 FOOT CONCRETE TRUST BLOCK 1 EACH

TYPE 1 OUTLET FOR CONCRETE CURB AND GUTTER. SEE STD 606006

PIPE DRAINS 12" 14 FOOT END SECTION, 12"

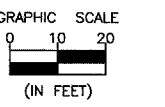
PIPE CULVERT, CLASS A, TYPE 1 18" 62 FOOT
DS 36' RT. STA. 25+00.0, ELEV. 538.10
PRECAST REINFORCED CONCRETE FLARED
END SECTIONS 18" 2 EA.
TRENCH BACKFILL 9 CU. YD.

INLET, TYPE B
TYPE B GRATE
33' LT. STA. 25+00
RIM ELEV. 540.47
INV. ELEV. 538.20

CENTERLINE CURVE DATA

$\Delta = 30^{\circ}06'23"$
 $R = 467.72'$
 $T = 125.79'$
 $L = 245.77'$
P.C. STA. 22+66.10
P.I. STA. 23+91.89
P.T. STA. 25+11.87
SE = 0.038%/,
SE TRANSITION
STA. 21+66.10 TO STA. 23+16.10
STA. 24+61.87 TO STA. 26+11.87

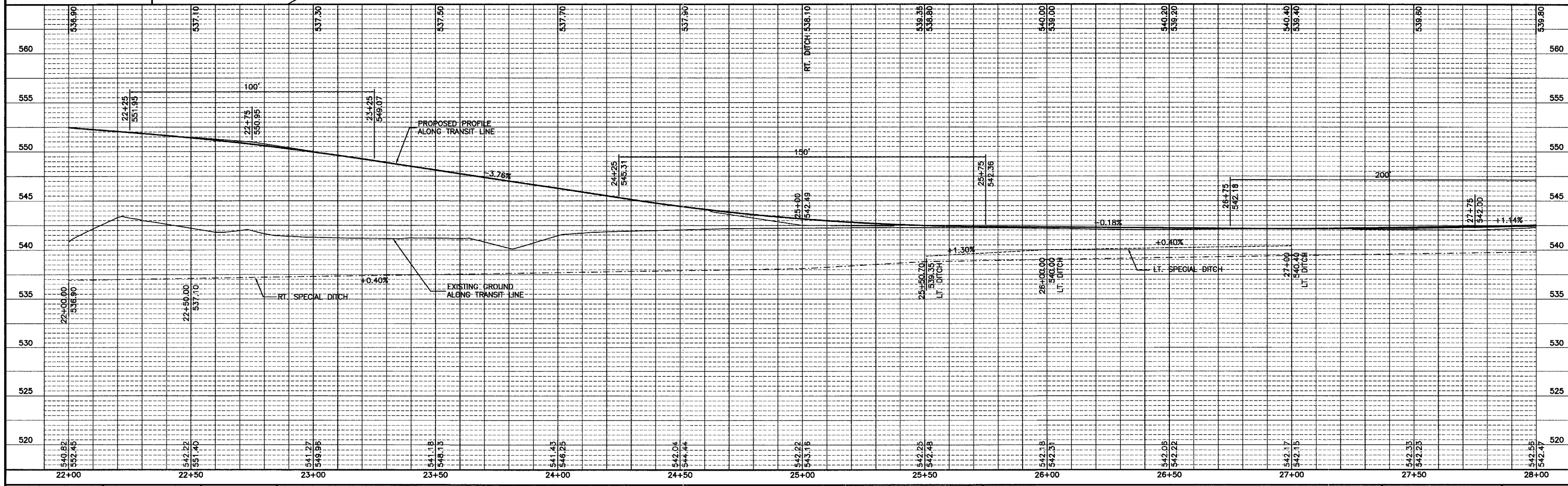
- DRIVEWAY REMOVAL
- PORTLAND CEMENT CONCRETE DRIVEWAY 8"
- PORTLAND CEMENT CONCRETE DRIVEWAY 6" OVER SUB-BASE GRANULAR MATERIAL TYPE A 4"



NOTE: SHOULDER CROSS SLOPE ON HIGH SIDE OF CURVE SHALL MATCH ROADWAY CROSS SLOPE. TRANSITION TO 4% SLOPE THROUGH SE TRANSITION.

B.M. # 5 ELEV. 542.93 EX. NAIL IN 2ND POWER POLE NORTH OF THE RIVER AND ON THE E. SIDE OF COUNTY RD.

END SECTION, 12" 52' RT. STA. 23+93.60
INV. ELEV. 538.17



DRAWN BY: ARR
CHECKED BY: JKC

DATE: 3/03

REVISIONS	
DATE	BY
3/08/04	NET
7/01/04	NET

CHAMLIN ASSOCIATES
PERU MORRIS ILLINOIS

FAS 259/COUNTY HIGHWAY 3 OVER FOX RIVER
SECTION 98-00545-00-BR
LASALLE COUNTY

PLAN AND PROFILE
STA. 22+00.00 TO 28+00.00

SCALE: AS NOTED
SHEET 13
FILE NO.: 11174.01Y-1 OF 79