

BENCH MARK:  
CHISELED "X" ON THE NORTHWEST ABUTMENT OF BRIDGE  
ELEV. 552.79

EXISTING STRUCTURE: SN 050-3013, THREE SPAN 310'-6" BK. TO BK. ABUTMENTS, 24'-0" O. TO O. DECK, STEEL GIRDER SUPERSTRUCTURE, PILE SUPPORTED PIERS AND MASONRY ABUTMENTS, BUILT IN 1953. EXISTING STRUCTURE WILL BE REMOVED AND REPLACED WITH A SEVEN SPAN, STEEL GIRDER/BEAM SUPERSTRUCTURE, AND PILE SUPPORTED PIERS AND ABUTMENTS AT A DIFFERENT LOCATION TO IMPROVE ALIGNMENT AND PROFILE OF ROADWAY. THE ROAD SHALL BE KEPT OPEN TO TRAFFIC BY UTILIZING STAGE CONSTRUCTION OF ROADWAY NO SALVAGE.

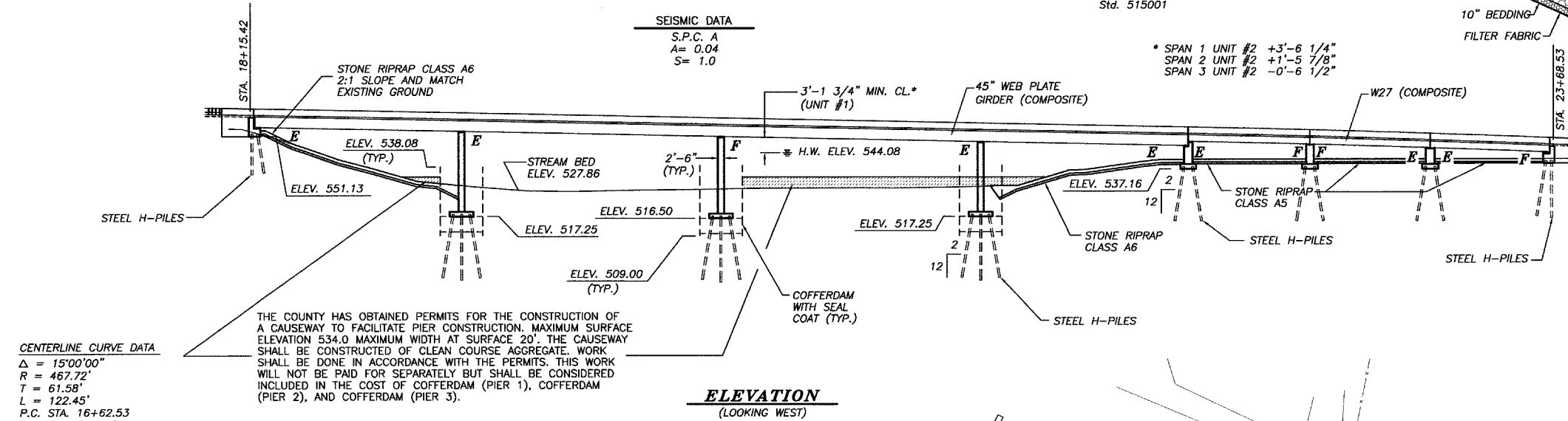
LOADING HS20-44	
ALLOW 50#/SQ. FT. FOR FUTURE WEARING SURFACE	
DESIGN SPECIFICATIONS	
2002 AASHTO	
DESIGN STRESSES	
FIELD UNITS	
$f'_c =$	3,500 psi (SUBSTRUCTURE)
$f'_c =$	4,000 psi (SUPERSTRUCTURE)
$f_y =$	50,000 psi (M270 GRADE 50)
$f_y =$	60,000 psi (REINFORCEMENT)
SEISMIC DATA	
S.P.C. A	
A =	0.04
S =	1.0

FOX RIVER  
BUILT BY 200...  
BY LASALLE COUNTY  
SEC. 98-00545-00-BR  
F.A.S. RT. 259 STA. 20+15.00  
F.A.S. PROJ. BRS-259 (108)  
STR. NO. 050-3562 LOADING HS20

NAME PLATE  
Std. 515001

WATERWAY DATA	
50 YEAR HWE 544.08±	
EXISTING BRIDGE OPENING	4383 SQ. FT.
EXISTING OVER-THE-ROAD	698 SQ. FT.
TOTAL	5081 SQ. FT.
PROPOSED BRIDGE OPENING	4691 SQ. FT.
PROPOSED OVER-THE-ROAD	390 SQ. FT.
TOTAL	5081 SQ. FT.

CONTRACT NO. 87240 SHEET 1 OF 38 SHEETS

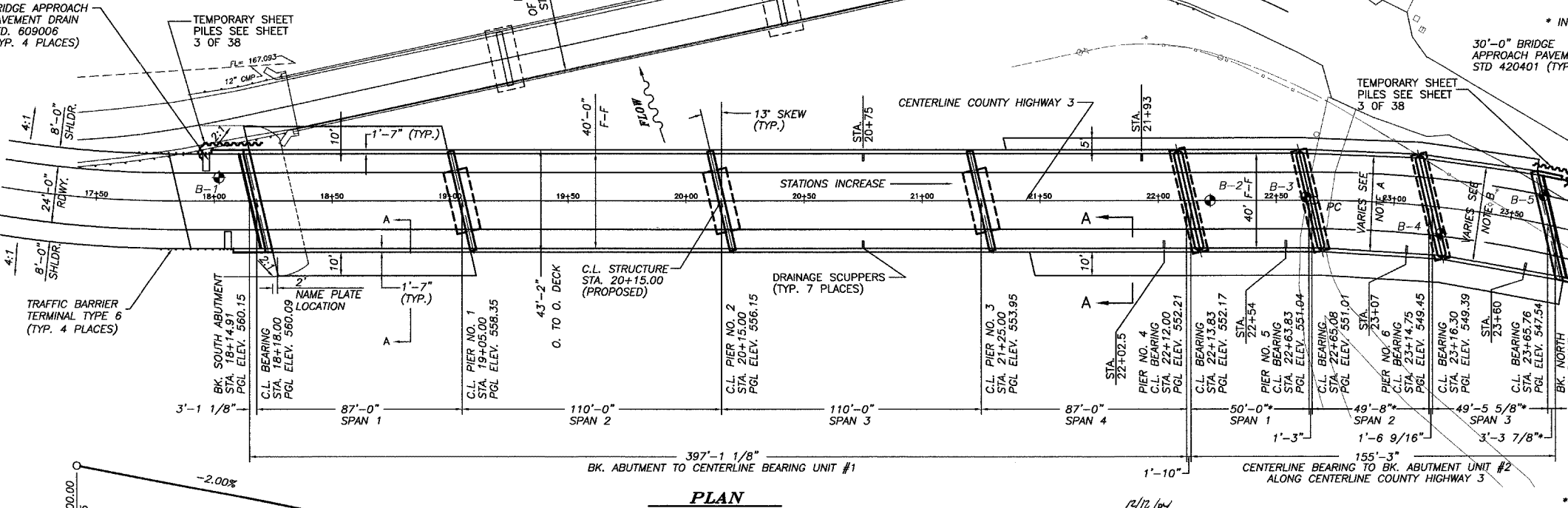


CENTERLINE CURVE DATA

$\Delta =$	15°00'00"
$R =$	467.72'
$T =$	61.58'
$L =$	122.45'
P.C. STA.	16+62.53
P.I. STA.	17+24.11
P.T. STA.	17+84.98
SE =	3.8%
SE TRANSITION	
STA. 15+69.18 TO STA. 17+09.21	
STA. 17+34.98 TO STA. 18+84.98	

THE COUNTY HAS OBTAINED PERMITS FOR THE CONSTRUCTION OF A CAUSEWAY TO FACILITATE PIER CONSTRUCTION. MAXIMUM SURFACE ELEVATION 534.0 MAXIMUM WIDTH AT SURFACE 20'. THE CAUSEWAY SHALL BE CONSTRUCTED OF CLEAN COURSE AGGREGATE. WORK SHALL BE DONE IN ACCORDANCE WITH THE PERMITS. THIS WORK WILL NOT BE PAID FOR SEPARATELY BUT SHALL BE CONSIDERED INCLUDED IN THE COST OF COFFERDAM (PIER 1), COFFERDAM (PIER 2), AND COFFERDAM (PIER 3).

ELEVATION  
(LOOKING WEST)



TRAFFIC BARRIER TERMINAL TYPE 6 (TYP. 4 PLACES)

TEMPORARY SHEET PILES SEE SHEET 3 OF 38

NAME PLATE LOCATION

C.L. STRUCTURE STA. 20+15.00 (PROPOSED)

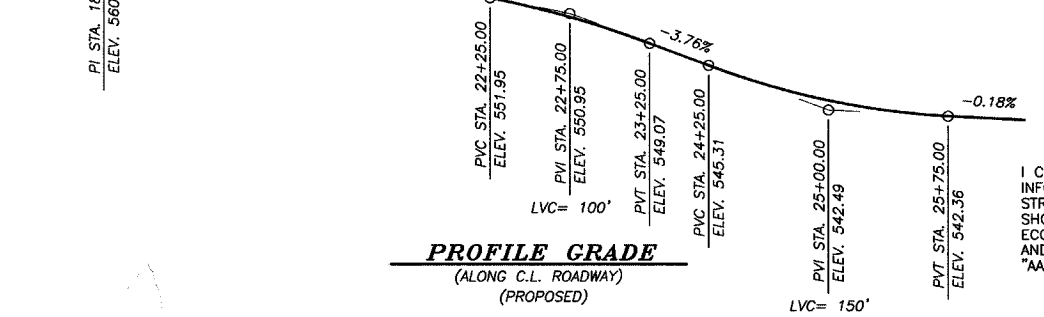
DRAINAGE SCUPPERS (TYP. 7 PLACES)

STATIONS INCREASE

TEMPORARY SHEET PILES SEE SHEET 3 OF 38

30'-0\"/>

PLAN



PROFILE GRADE  
(ALONG C.L. ROADWAY)  
(PROPOSED)

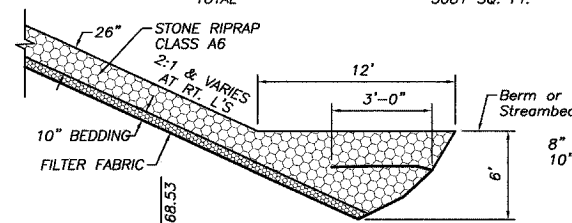
I CERTIFY THAT TO THE BEST OF MY KNOWLEDGE, INFORMATION AND BELIEF, THIS BRIDGE DESIGN IS STRUCTURALLY ADEQUATE FOR THE DESIGN LOADING SHOWN ON THE PLANS. THE DESIGN IS AN ECONOMICAL ONE FOR THE STYLE OF STRUCTURE AND COMPLIES WITH REQUIREMENTS OF THE CURRENT "AASHTO STANDARD SPECIFICATIONS FOR HIGHWAY BRIDGES".



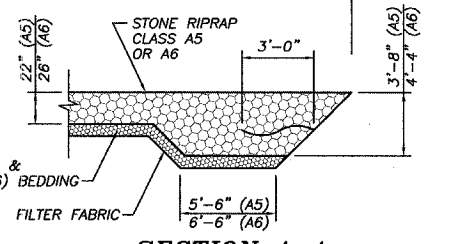
CENTERLINE CURVE DATA

$\Delta =$	30°06'23"
$R =$	467.72'
$T =$	125.79'
$L =$	245.77'
P.C. STA.	22+66.10
P.I. STA.	23+91.89
P.T. STA.	25+11.87
SE =	3.8%
SE TRANSITION	
STA. 21+66.10 TO STA. 23+16.10	
STA. 24+61.87 TO STA. 26+11.87	

NOTE A - VARIES 39'-7 5/16" TO 40'-6 9/16"  
NOTE B - VARIES 39'-5 7/16" TO 40'-8 1/16"  
CENTERLINE PIER NO. 4 STA. 22+12.92  
CENTERLINE PIER NO. 5 STA. 22+64.46  
CENTERLINE PIER NO. 6 STA. 23+15.55 SKEW TO RADIAL LINE 19°03'26"



TOE STONE RIPRAP TREATMENT



SECTION A-A

EXCAVATION FOR PLACING POROUS GRANULAR EMBANKMENT IS PAID FOR AS "STRUCTURE EXCAVATION".

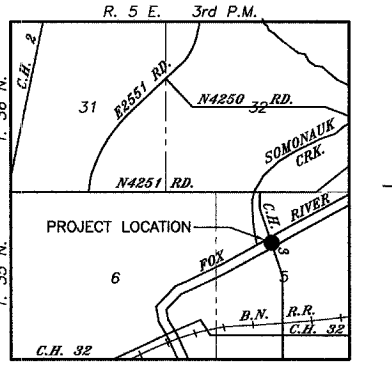
GEOTECHNICAL FABRIC FOR FRENCH DRAINS.\*

BACKFILL WITH UNCOMPACTED POROUS GRANULAR EMBANKMENT WITH A GRADATION OF CA-5 OR CA-7 BY BRIDGE CONTRACTOR AFTER SUPERSTRUCTURE IS IN PLACE. LIMITS SHALL BE 1'-0" FROM THE END OF EACH WINGWALL.

A 6" PERFORATED DRAIN PIPE SHALL BE SITUATED AT THE BOTTOM OF AN APPROXIMATE 2'x2' AREA OF POROUS GRANULAR EMBANKMENT. THE 2'x2' AREA SHALL BE WRAPPED COMPLETELY IN GEOTECHNICAL FABRIC FOR FRENCH DRAINS. EXTEND PIPE PARALLEL WITH THE CAP UNTIL WINGWALLS HAVE BEEN CROSSED SEE ROADWAY PLANS\*

\* INCLUDED IN THE COST OF "POROUS GRANULAR EMBANKMENT"

SECTION THRU ABUTMENTS  
DIMENSIONS AT RIGHT ANGLES



LOCATION SKETCH

GENERAL PLAN  
FAS 259 C.H. 3  
OVER FOX RIVER  
LA SALLE COUNTY  
STA. 20+15.00  
STRUCTURE NO. 050-3562

DRAWN BY: JKC/LAG	CAD: GENP	REVISIONS		SCALE: AS NOTED	SHEET 26
		DATE	BY		
CHECKED BY: JKC	DATE: 02/03	3/08/04	NET	FILE NO.: 11174.01Y-1	OF 79
		6/29/04	NET		