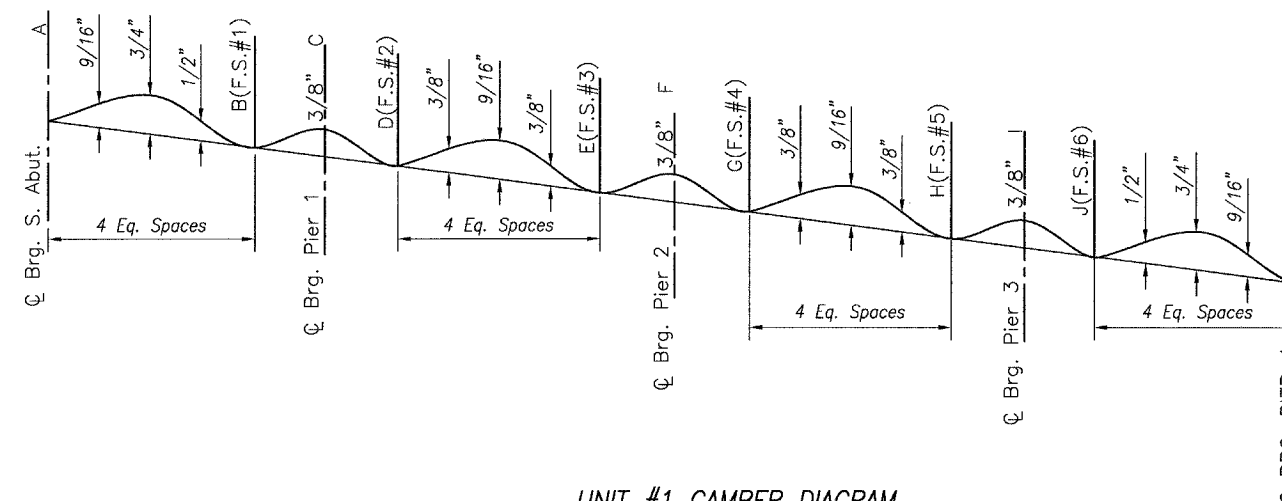
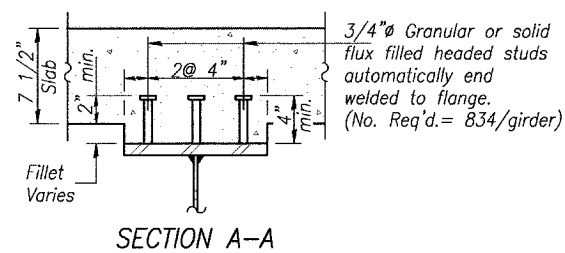
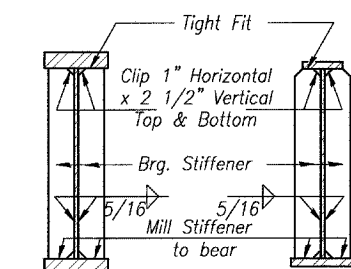


GIRDER ELEVATION
 "NTR" denotes plates to which notch toughness requirements are applicable.

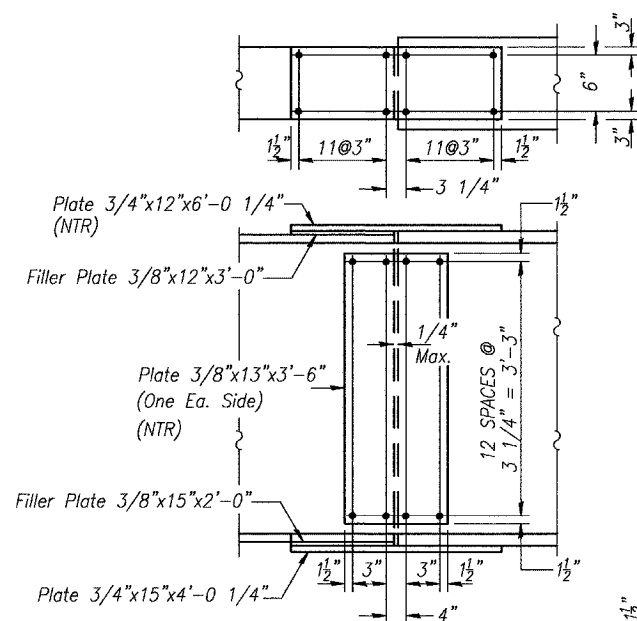


GIRDER #	A	B	C	D	E	F	G	H	I	J	K
1	559.04	557.68	557.27	556.78	555.51	555.07	554.57	553.30	552.87	552.40	551.29
2	559.16	557.79	557.38	556.89	555.63	555.18	554.69	553.41	552.98	552.51	551.43
3	559.27	557.91	557.50	557.01	555.74	555.30	554.80	553.53	553.10	552.63	551.46
4	559.33	557.88	557.46	556.97	555.71	555.26	554.77	553.49	553.06	552.59	551.36
5	559.33	557.69	557.28	556.79	555.52	555.08	554.58	553.31	552.88	552.41	551.17
6	559.32	557.51	557.10	556.61	555.34	554.90	554.40	553.13	552.70	552.23	550.99

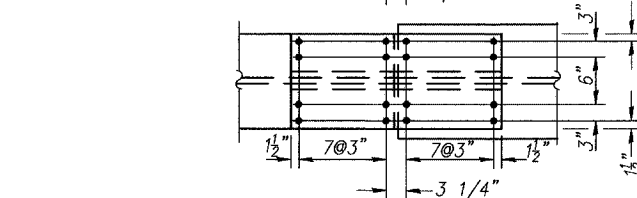
Note: Elevations are at top of web.



SECTION AT PIER



SECTION AT ABUTMENT



FIELD SPLICE DETAIL

All fasteners shall be 7/8" H.S. bolts with 15/16" holes

FRAMING DETAILS - UNIT #1
 FAS 259 C.H. 3
 OVER FOX RIVER
 LA SALLE COUNTY
 STA. 20+15.00
 STRUCTURE NO. 050-3562

DRAWN BY: AAR	CAD: GIRDER1	REVISIONS		SCALE: AS NOTED	SHEET 40
		DATE	BY		
CHECKED BY: JKC	DATE: 02/03	3/08/04	NET	FILE NO.: 11174.01Y-1	OF 79
		7/01/04	NET		